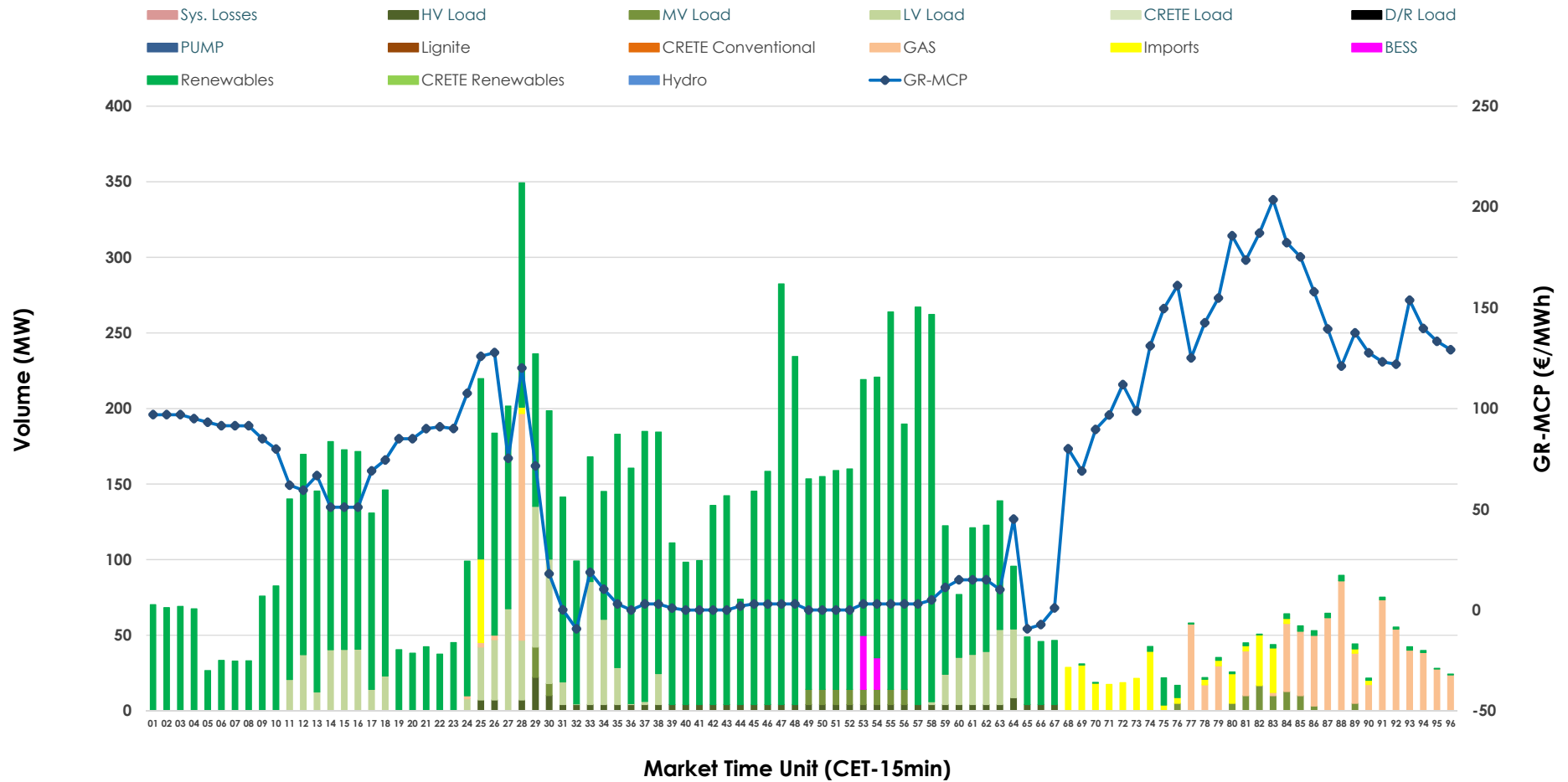


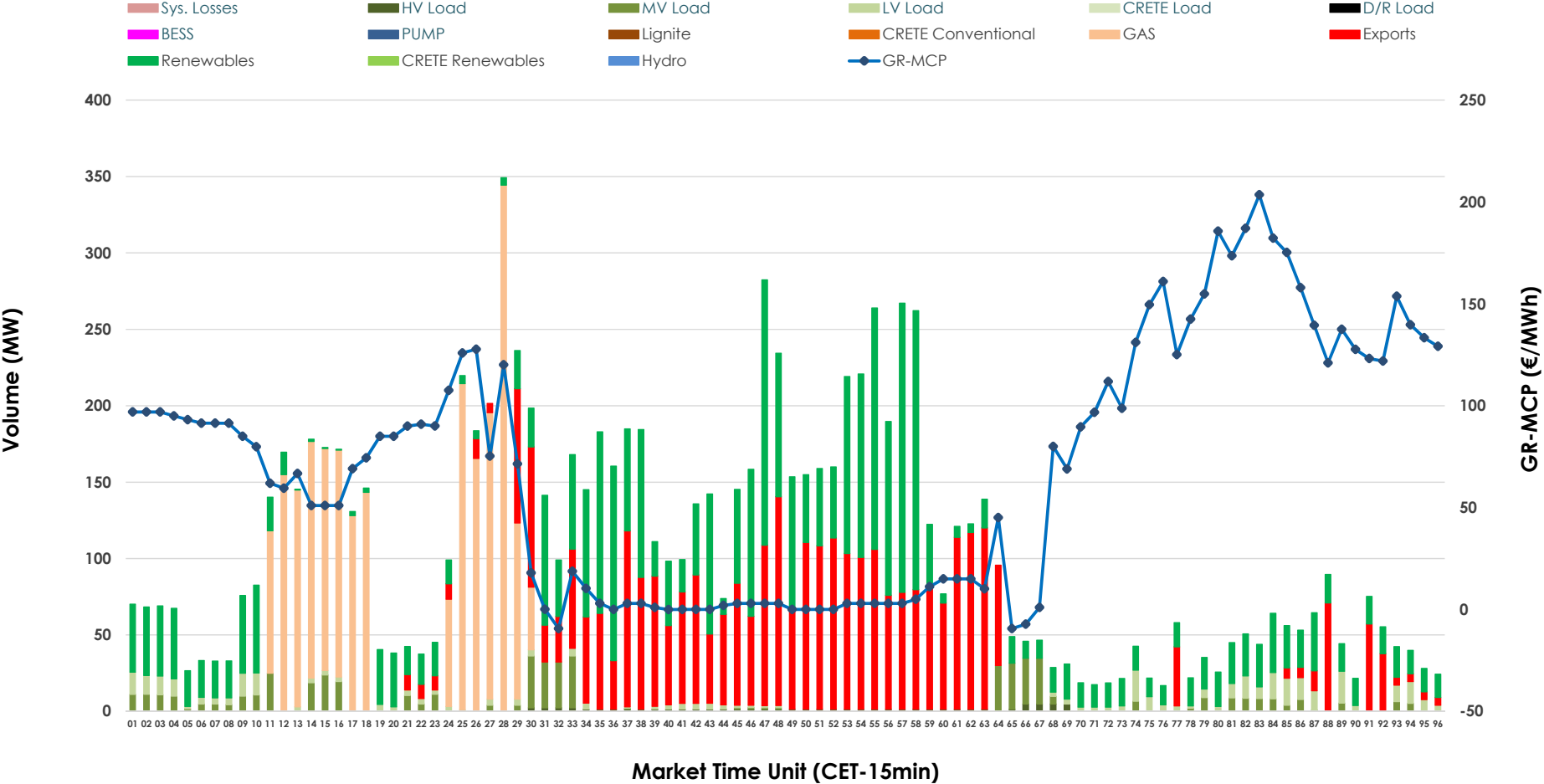


IDA '2' Market Outlook

20.05.2026 IDA '2' Market - Sell



20.05.2026 IDA '2' Market - Buy



GR Bidding Zone Weekly Figures

Delivery Day	14.05	15.05	16.05	17.05	18.05	19.05	20.05
	➔ 0%	👇 -3%	👇 -10%	👇 -12%	👆 36%	👆 29%	👇 -46%
Avg.MCP (€/MWh)	94.61	91.42	82.13	72.35	98.59	127.58	69.29
Max.MCP (€/MWh)	232.85	167.09	133.13	155.79	281.79	231.13	203.57
Min.MCP (€/MWh)	-8.88	-10.00	10.02	-10.01	-8.32	71.02	-9.37
	👇 -5%	👇 -7%	👇 -23%	👆 25%	👆 57%	👇 -11%	👇 -6%
Tot.Vol(GWh)	4.40	4.07	3.11	3.90	6.11	5.45	5.14

Trades by Order Type

Delivery Day		14.05	15.05	16.05	17.05	18.05	19.05	20.05	
Ord Price Type		Sell & Buy Trades in (GWh) per Price Type							(%)
PPT	(S)	0.000	0.000	0.000	0.000	0.000	0.000	0.000	0.00%
HBD	(S)	1.666	1.801	1.365	0.900	2.778	1.464	2.483	96.65%
BLK	(S)	0.000	0.000	0.000	0.000	0.000	0.000	0.000	0.00%
CPL	(S)	0.535	0.234	0.192	1.052	0.276	1.261	0.086	3.35%
PPT	(B)	0.000	0.000	0.000	0.000	0.000	0.000	0.000	0.00%
HBD	(B)	1.709	1.718	0.907	1.861	2.994	2.401	1.762	68.57%
BLK	(B)	0.000	0.000	0.000	0.000	0.000	0.000	0.000	0.00%
CPL	(B)	0.491	0.317	0.650	0.091	0.061	0.324	0.807	31.43%
		Sell & Buy Orders Traded per Price Type							(%)
PPT	(S)	0	0	0	0	0	0	0	0.00%
HBD	(S)	284	268	336	353	482	350	332	100.00%
BLK	(S)	0	0	0	0	0	0	0	0.00%
PPT	(B)	0	0	0	0	0	0	0	0.00%
HBD	(B)	353	517	271	647	1212	662	544	100.00%
BLK	(B)	0	0	0	0	0	0	0	0.00%

- MCP** Market Clearing Price (€/MWh)
- PPT** Priority Price-Taking
- HBD** Hybrid
- BLK** Block
- CPL** Market Coupling Flow

Trade's Volume Mix

	Sell - MWh	Buy - MWh	
Lignite (0.0%)	0	0	(0.0%)
Crete Conv. (0.0%)	0	0	(0.0%)
Gas (8.6%)	221	562	(21.9%)
Hydro (0.0%)	0	0	(0.0%)
Imports (3.3%)	86		
RES (73.8%)	1,895	947	(36.9%)
Crete RES (0.0%)	0	0	(0.0%)
BESS (0.6%)	14	0	(0.0%)
HV Load (2.1%)	53	19	(0.7%)
MV Load (1.8%)	46	135	(5.3%)
LV Load (9.8%)	253	99	(3.9%)
Crete Load (0.0%)	0	0	(0.0%)
Pumping (0.0%)	0	0	(0.0%)
Exports		807	(31.4%)
Sys.Losses (0.0%)	0	0	(0.0%)
D/R Load (0.0%)	0	0	(0.0%)

