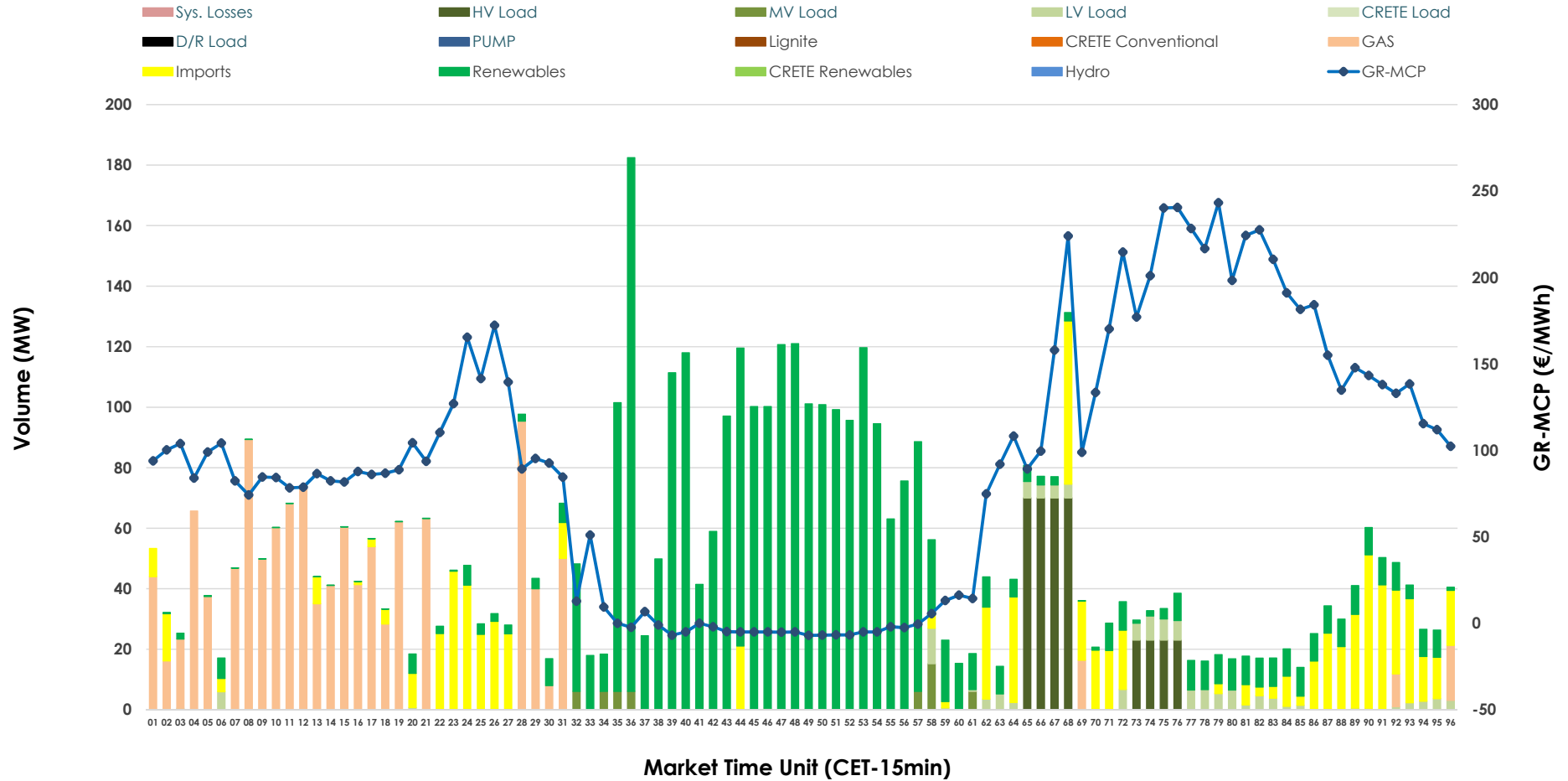


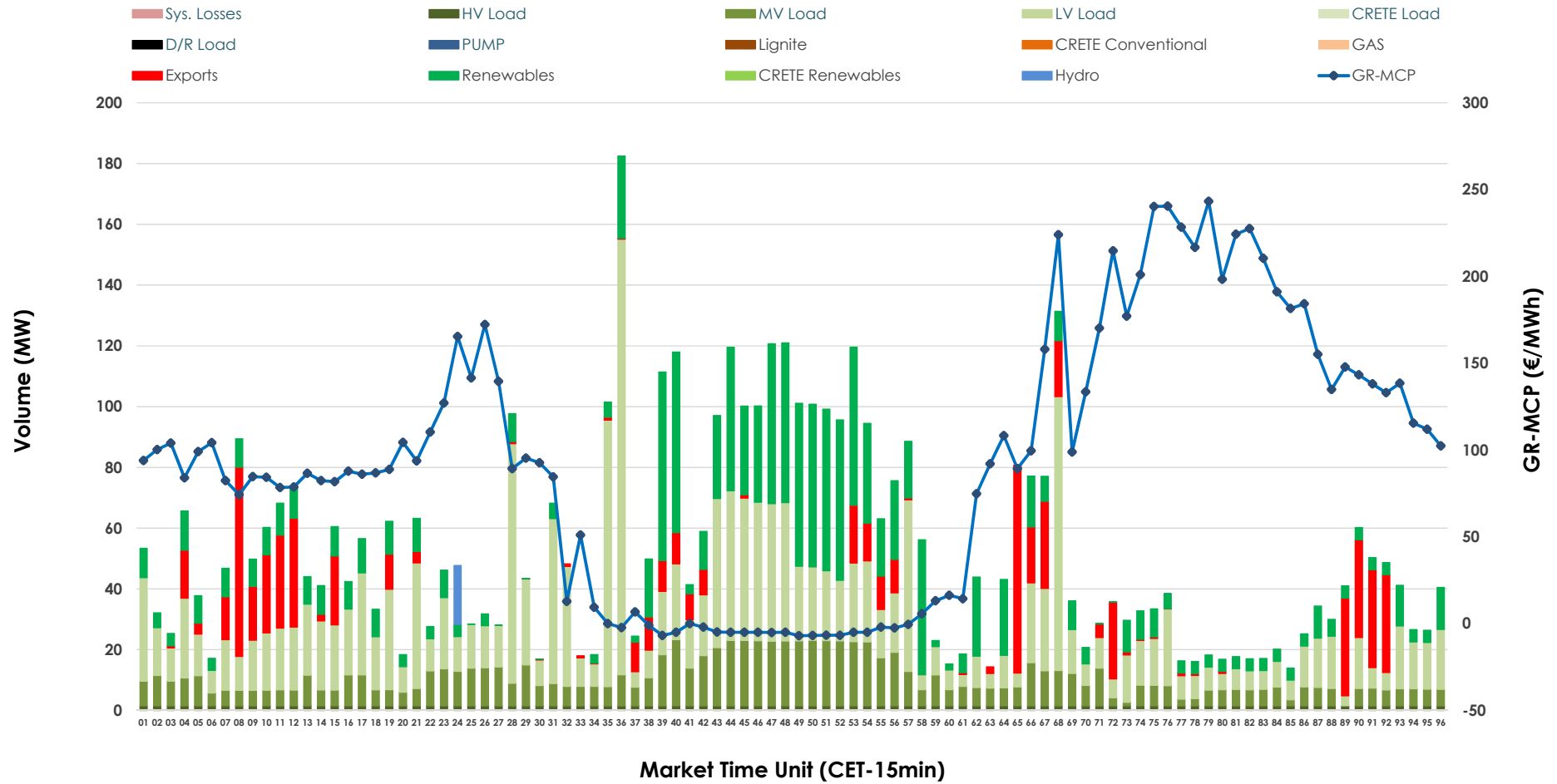


# IDA '1' Market Outlook

11.03.2026 IDA '1' Market - Sell



### 11.03.2026 IDA '1' Market - Buy



### GR Bidding Zone Weekly Figures

Delivery Day	05.03	06.03	07.03	08.03	09.03	10.03	11.03
	↗ 3%	↘ -19%	↘ -4%	→ 0%	→ 0%	↗ 2%	↗ 16%
<b>Avg.MCP (€/MWh)</b>	100.31	81.18	77.97	77.99	78.31	79.81	92.43
<b>Max.MCP (€/MWh)</b>	212.70	211.99	161.96	163.76	251.15	250.86	243.25
<b>Min.MCP (€/MWh)</b>	0.79	-20.04	-18.65	-15.11	-15.00	-14.90	-6.99
	↘ -78%	↗ 115%	↘ -53%	↘ -14%	↗ 45%	↗ 31%	↘ -46%
<b>Tot.Vol(GWh)</b>	2.92	6.29	2.95	2.53	3.68	4.82	2.58

### Trades by Order Type

Delivery Day		05.03	06.03	07.03	08.03	09.03	10.03	11.03	
<b>Ord Price Type</b>		Sell & Buy Trades in (GWh) per Price Type							(%)
<b>PPT</b>	(S)	0.000	0.000	0.000	0.000	0.000	0.000	0.000	0.00%
<b>HBD</b>	(S)	0.881	2.666	1.263	0.957	1.689	2.271	1.087	84.29%
<b>BLK</b>	(S)	0.000	0.000	0.000	0.000	0.000	0.000	0.000	0.00%
<b>CPL</b>	(S)	0.580	0.481	0.214	0.307	0.149	0.140	0.203	15.71%
<b>PPT</b>	(B)	0.000	0.000	0.000	0.000	0.000	0.000	0.000	0.00%
<b>HBD</b>	(B)	1.383	2.469	1.355	1.173	1.678	2.365	1.124	87.15%
<b>BLK</b>	(B)	0.000	0.000	0.000	0.000	0.000	0.000	0.000	0.00%
<b>CPL</b>	(B)	0.078	0.678	0.123	0.090	0.160	0.046	0.166	12.85%
		Sell & Buy Orders Traded per Price Type							(%)
<b>PPT</b>	(S)	0	0	0	0	0	0	0	0.00%
<b>HBD</b>	(S)	239	326	220	64	89	435	222	100.00%
<b>BLK</b>	(S)	0	0	0	0	0	0	0	0.00%
<b>PPT</b>	(B)	0	0	0	0	0	0	0	0.00%
<b>HBD</b>	(B)	929	682	771	840	840	1017	922	100.00%
<b>BLK</b>	(B)	0	0	0	0	0	0	0	0.00%

- MCP** Market Clearing Price (€/MWh)
- PPT** Priority Price-Taking
- HBD** Hybrid
- BLK** Block
- CPL** Market Coupling Flow

### Trade's Volume Mix

	Sell - MWh	Buy - MWh	
<b>Lignite</b>	0	0	(0.0%)
<b>Crete Conv.</b>	0	0	(0.0%)
<b>Gas</b>	300	0	(0.0%)
<b>Hydro</b>	0	5	(0.4%)
<b>Imports</b>	203		
<b>RES</b>	647	328	(25.4%)
<b>Crete RES</b>	0	0	(0.0%)
<b>HV Load</b>	93	36	(2.8%)
<b>MV Load</b>	14	227	(17.6%)
<b>LV Load</b>	34	529	(41.0%)
<b>Crete Load</b>	0	0	(0.0%)
<b>Pumping</b>	0	0	(0.0%)
<b>Exports</b>		166	(12.9%)
<b>Sys.Losses</b>	0	0	(0.0%)
<b>D/R Load</b>	0	0	(0.0%)

