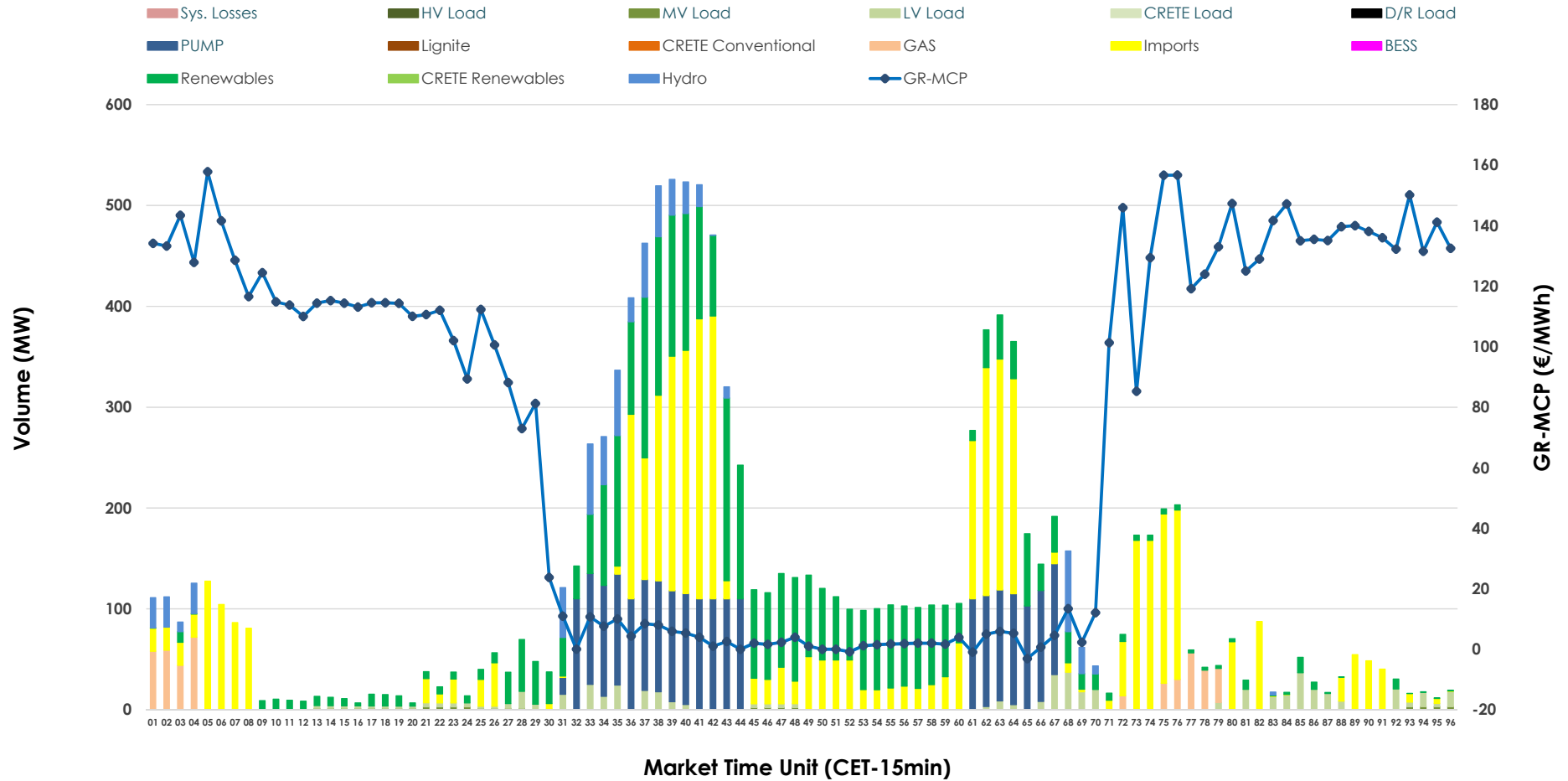


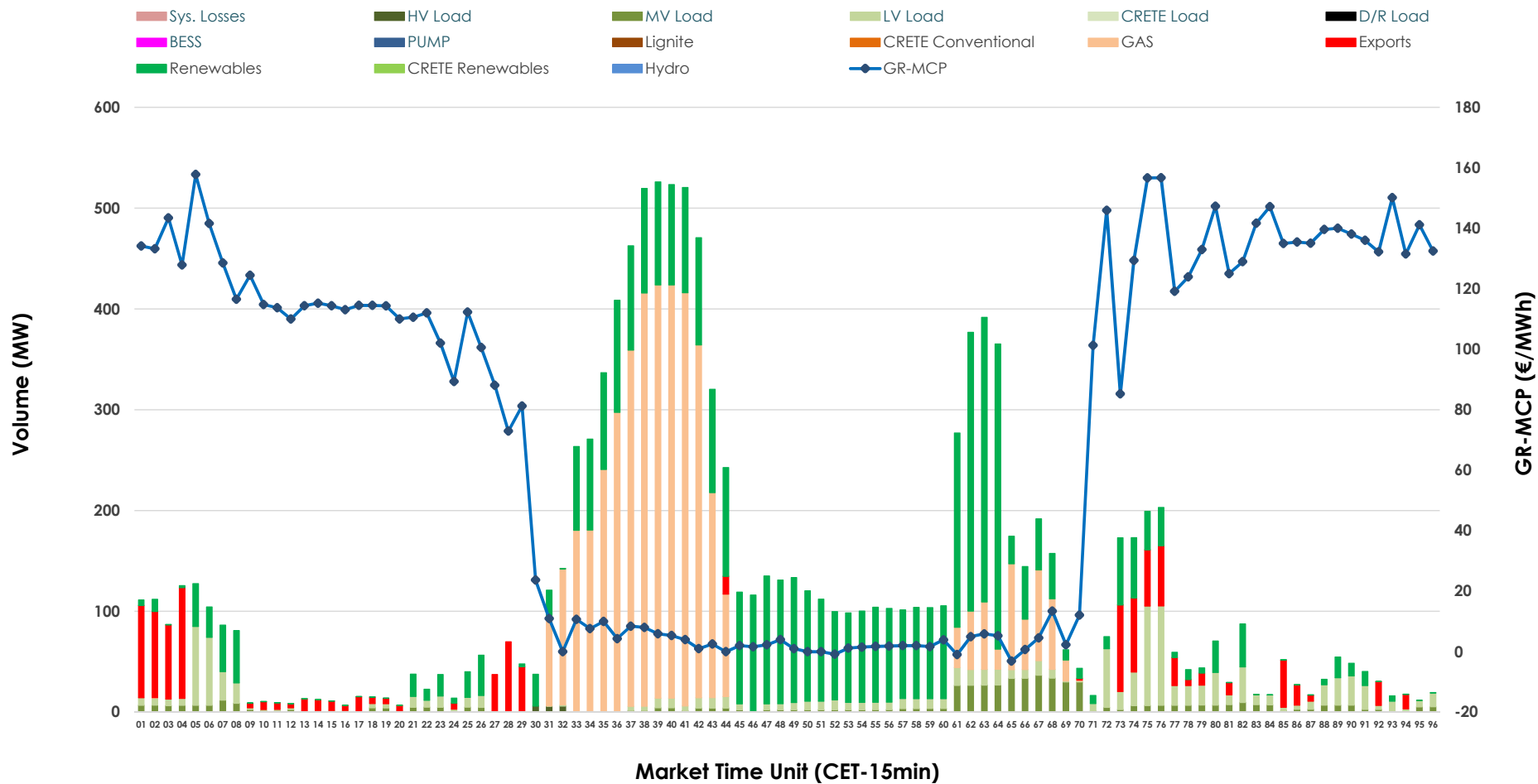


IDA '1' Market Outlook

05.07.2026 IDA '1' Market - Sell



05.07.2026 IDA '1' Market - Buy



GR Bidding Zone Weekly Figures

Delivery Day	29.06	30.06	01.07	02.07	03.07	04.07	05.07
	↗ 25%	↕ 57%	↗ 19%	↘ -15%	↘ -31%	↘ -22%	↘ -5%
Avg.MCP (€/MWh)	90.14	141.44	168.85	142.91	98.80	76.99	72.78
Max.MCP (€/MWh)	280.03	533.79	391.22	302.27	166.44	170.22	157.80
Min.MCP (€/MWh)	-6.62	-7.05	69.99	20.36	8.23	-10.67	-3.13
	↘ -27%	↕ 47%	↘ -10%	↘ -34%	↕ 41%	↕ 76%	↘ -27%
Tot.Vol(GWh)	3.81	5.61	5.07	3.34	4.70	8.25	6.02

Trades by Order Type

Delivery Day		29.06	30.06	01.07	02.07	03.07	04.07	05.07	
Ord Price Type		Sell & Buy Trades in (GWh) per Price Type							(%)
PPT	(S)	0.000	0.000	0.000	0.000	0.000	0.000	0.000	0.00%
HBD	(S)	1.804	2.790	2.505	0.758	1.144	3.352	1.853	61.56%
BLK	(S)	0.000	0.000	0.000	0.000	0.000	0.000	0.000	0.00%
CPL	(S)	0.102	0.016	0.031	0.913	1.205	0.775	1.157	38.44%
PPT	(B)	0.000	0.000	0.000	0.000	0.000	0.000	0.000	0.00%
HBD	(B)	1.323	1.229	1.733	1.294	1.769	1.640	2.741	91.07%
BLK	(B)	0.000	0.000	0.000	0.000	0.000	0.000	0.000	0.00%
CPL	(B)	0.582	1.577	0.803	0.376	0.580	2.487	0.269	8.93%
		Sell & Buy Orders Traded per Price Type							(%)
PPT	(S)	0	0	0	0	0	0	0	0.00%
HBD	(S)	538	567	391	275	315	394	233	100.00%
BLK	(S)	0	0	0	0	0	0	0	0.00%
PPT	(B)	0	0	0	0	0	0	0	0.00%
HBD	(B)	479	300	563	513	635	407	670	100.00%
BLK	(B)	0	0	0	0	0	0	0	0.00%

- MCP** Market Clearing Price (€/MWh)
- PPT** Priority Price-Taking
- HBD** Hybrid
- BLK** Block
- CPL** Market Coupling Flow

Trade's Volume Mix

	Sell - MWh	Buy - MWh	
Lignite	0	0	(0.0%)
Crete Conv.	0	0	(0.0%)
Gas	108	1,073	(35.7%)
Hydro	169	0	(0.0%)
Imports	1,157		
RES	876	1,208	(40.2%)
Crete RES	0	0	(0.0%)
BESS	0	0	(0.0%)
HV Load	0	5	(0.1%)
MV Load	12	153	(5.1%)
LV Load	135	302	(10.0%)
Crete Load	0	0	(0.0%)
Pumping	552	0	(0.0%)
Exports		269	(8.9%)
Sys.Losses	0	0	(0.0%)
D/R Load	0	0	(0.0%)

