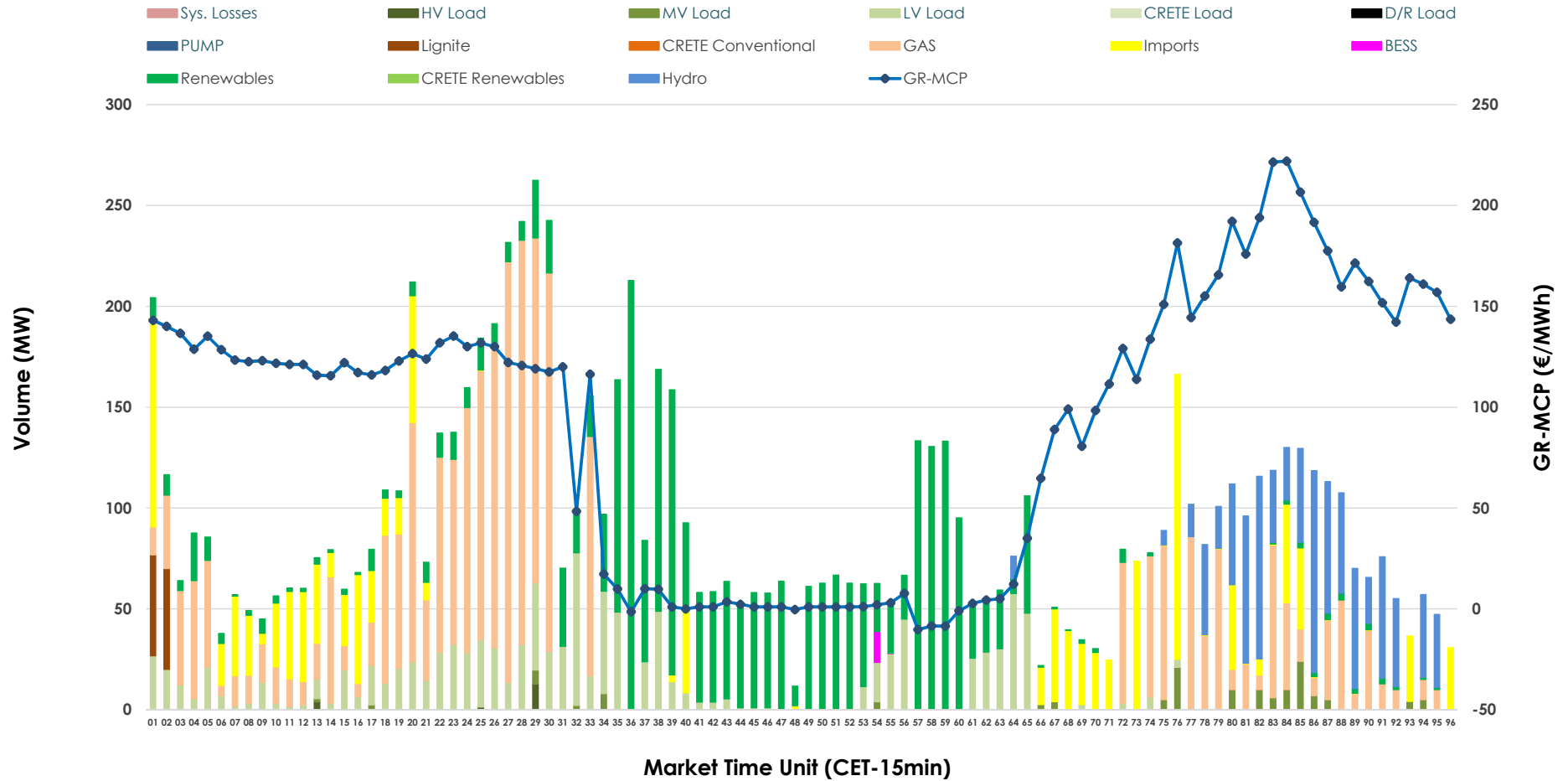


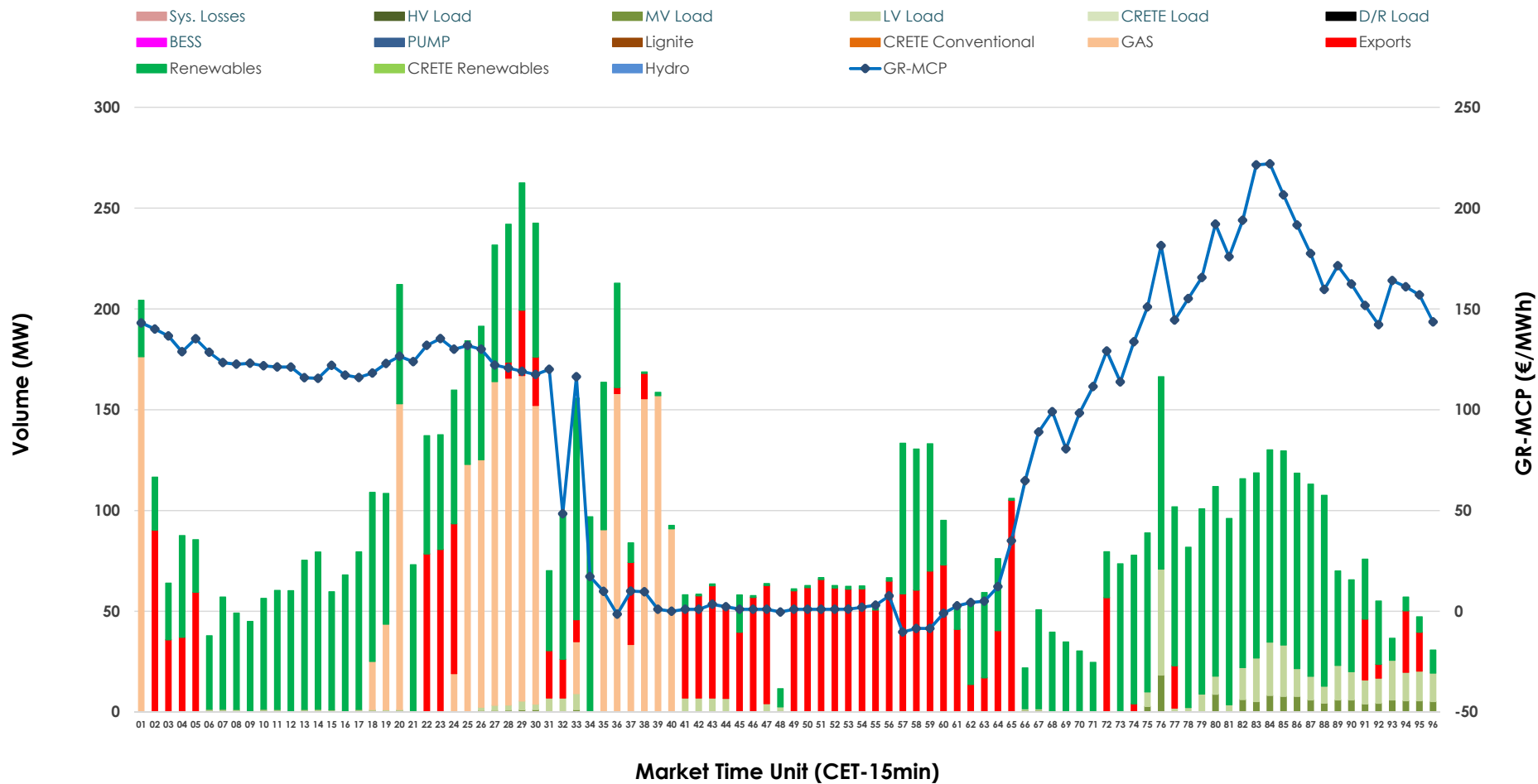


IDA '2' Market Outlook

21.05.2026 IDA '2' Market - Sell



21.05.2026 IDA '2' Market - Buy



GR Bidding Zone Weekly Figures

Delivery Day	15.05	16.05	17.05	18.05	19.05	20.05	21.05
	👇 -3%	👇 -10%	👇 -12%	👆 36%	👆 29%	👇 -46%	👆 33%
Avg.MCP (€/MWh)	91.42	82.13	72.35	98.59	127.58	69.29	92.33
Max.MCP (€/MWh)	167.09	133.13	155.79	281.79	231.13	203.57	221.99
Min.MCP (€/MWh)	-10.00	10.02	-10.01	-8.32	71.02	-9.37	-10.26
	👇 -7%	👇 -23%	👆 25%	👆 57%	👇 -11%	👇 -6%	👇 -12%
Tot.Vol(GWh)	4.07	3.11	3.90	6.11	5.45	5.14	4.55

Trades by Order Type

Delivery Day		15.05	16.05	17.05	18.05	19.05	20.05	21.05	
Ord Price Type		Sell & Buy Trades in (GWh) per Price Type							(%)
PPT	(S)	0.000	0.000	0.000	0.000	0.000	0.000	0.000	0.00%
HBD	(S)	1.801	1.365	0.900	2.778	1.464	2.483	1.964	86.40%
BLK	(S)	0.000	0.000	0.000	0.000	0.000	0.000	0.000	0.00%
CPL	(S)	0.234	0.192	1.052	0.276	1.261	0.086	0.309	13.60%
PPT	(B)	0.000	0.000	0.000	0.000	0.000	0.000	0.000	0.00%
HBD	(B)	1.718	0.907	1.861	2.994	2.401	1.762	1.744	76.71%
BLK	(B)	0.000	0.000	0.000	0.000	0.000	0.000	0.000	0.00%
CPL	(B)	0.317	0.650	0.091	0.061	0.324	0.807	0.529	23.29%
		Sell & Buy Orders Traded per Price Type							(%)
PPT	(S)	0	0	0	0	0	0	0	0.00%
HBD	(S)	268	336	353	482	350	332	268	100.00%
BLK	(S)	0	0	0	0	0	0	0	0.00%
PPT	(B)	0	0	0	0	0	0	0	0.00%
HBD	(B)	517	271	647	1212	662	544	413	100.00%
BLK	(B)	0	0	0	0	0	0	0	0.00%

- MCP** Market Clearing Price (€/MWh)
- PPT** Priority Price-Taking
- HBD** Hybrid
- BLK** Block
- CPL** Market Coupling Flow

Trade's Volume Mix

	Sell - MWh	Buy - MWh	
Lignite (1.1%)	25	0	(0.0%)
Crete Conv. (0.0%)	0	0	(0.0%)
Gas (32.9%)	748	501	(22.0%)
Hydro (9.9%)	225	0	(0.0%)
Imports (13.6%)	309		
RES (27.8%)	633	1,107	(48.7%)
Crete RES (0.0%)	0	0	(0.0%)
BESS (0.2%)	4	0	(0.0%)
HV Load (0.2%)	5	0	(0.0%)
MV Load (1.5%)	35	34	(1.5%)
LV Load (12.8%)	291	102	(4.5%)
Crete Load (0.0%)	0	0	(0.0%)
Pumping (0.0%)	0	0	(0.0%)
Exports		529	(23.3%)
Sys.Losses (0.0%)	0	0	(0.0%)
D/R Load (0.0%)	0	0	(0.0%)

