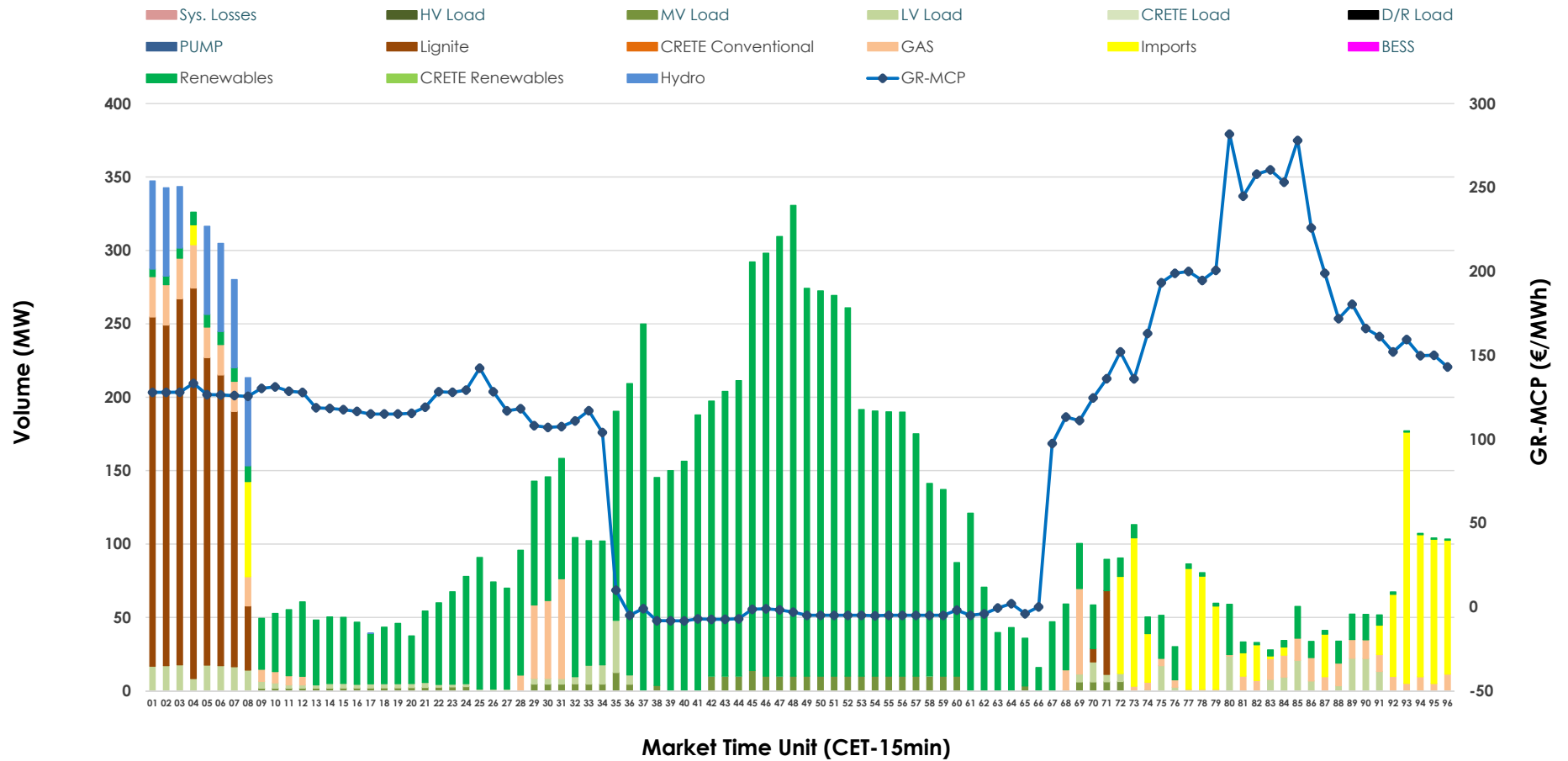


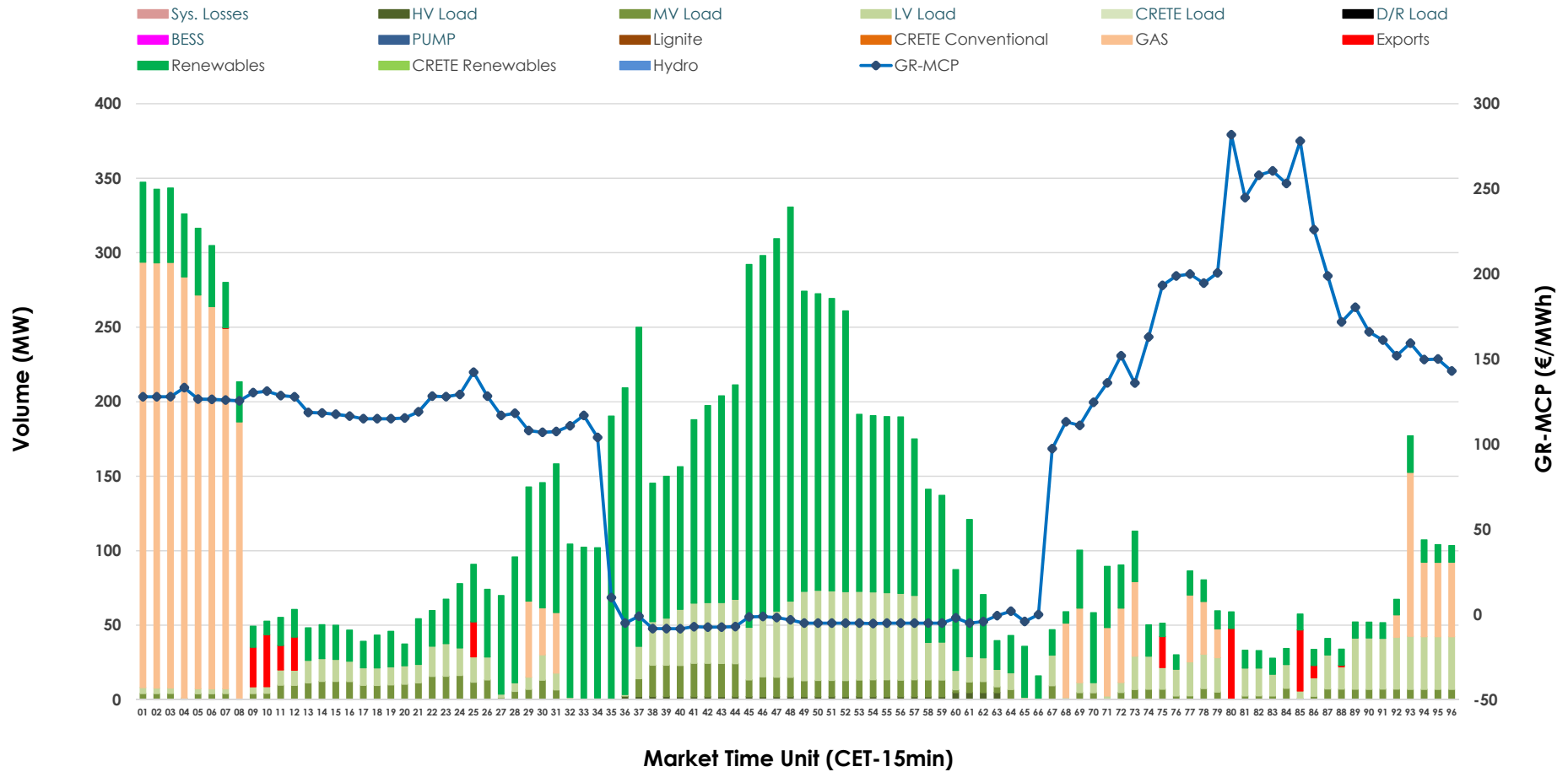


IDA '2' Market Outlook

18.05.2026 IDA '2' Market - Sell



18.05.2026 IDA '2' Market - Buy



GR Bidding Zone Weekly Figures

Delivery Day	12.05	13.05	14.05	15.05	16.05	17.05	18.05
	👇 -22%	👈 16%	➡️ 0%	👇 -3%	👇 -10%	👇 -12%	👈 36%
Avg.MCP (€/MWh)	82.23	95.03	94.61	91.42	82.13	72.35	98.59
Max.MCP (€/MWh)	199.04	189.00	232.85	167.09	133.13	155.79	281.79
Min.MCP (€/MWh)	-4.56	-11.80	-8.88	-10.00	10.02	-10.01	-8.32
	👈 103%	👇 -7%	👇 -5%	👇 -7%	👇 -23%	👈 25%	👈 57%
Tot.Vol(GWh)	4.98	4.64	4.40	4.07	3.11	3.90	6.11

Trades by Order Type

Delivery Day		12.05	13.05	14.05	15.05	16.05	17.05	18.05	
Ord Price Type		Sell & Buy Trades in (GWh) per Price Type							(%)
PPT	(S)	0.000	0.000	0.000	0.000	0.000	0.000	0.000	0.00%
HBD	(S)	2.445	1.576	1.666	1.801	1.365	0.900	2.778	90.95%
BLK	(S)	0.000	0.000	0.000	0.000	0.000	0.000	0.000	0.00%
CPL	(S)	0.044	0.743	0.535	0.234	0.192	1.052	0.276	9.05%
PPT	(B)	0.000	0.000	0.000	0.000	0.000	0.000	0.000	0.00%
HBD	(B)	1.663	2.095	1.709	1.718	0.907	1.861	2.994	98.02%
BLK	(B)	0.000	0.000	0.000	0.000	0.000	0.000	0.000	0.00%
CPL	(B)	0.826	0.224	0.491	0.317	0.650	0.091	0.061	1.98%
		Sell & Buy Orders Traded per Price Type							(%)
PPT	(S)	0	0	0	0	0	0	0	0.00%
HBD	(S)	343	270	284	268	336	353	482	100.00%
BLK	(S)	0	0	0	0	0	0	0	0.00%
PPT	(B)	0	0	0	0	0	0	0	0.00%
HBD	(B)	453	469	353	517	271	647	1212	100.00%
BLK	(B)	0	0	0	0	0	0	0	0.00%

- MCP** Market Clearing Price (€/MWh)
- PPT** Priority Price-Taking
- HBD** Hybrid
- BLK** Block
- CPL** Market Coupling Flow

Trade's Volume Mix

	Sell - MWh	Buy - MWh	
Lignite (13.7%)	419	0	(0.0%)
Crete Conv. (0.0%)	0	0	(0.0%)
Gas (5.6%)	170	708	(23.2%)
Hydro (3.3%)	100	0	(0.0%)
Imports (9.0%)	276		
RES (62.3%)	1,904	1,570	(51.4%)
Crete RES (0.0%)	0	0	(0.0%)
BESS (0.0%)	0	0	(0.0%)
HV Load (0.0%)	0	18	(0.6%)
MV Load (2.5%)	76	195	(6.4%)
LV Load (3.6%)	109	504	(16.5%)
Crete Load (0.0%)	0	0	(0.0%)
Pumping (0.0%)	0	0	(0.0%)
Exports		61	(2.0%)
Sys.Losses (0.0%)	0	0	(0.0%)
D/R Load (0.0%)	0	0	(0.0%)

