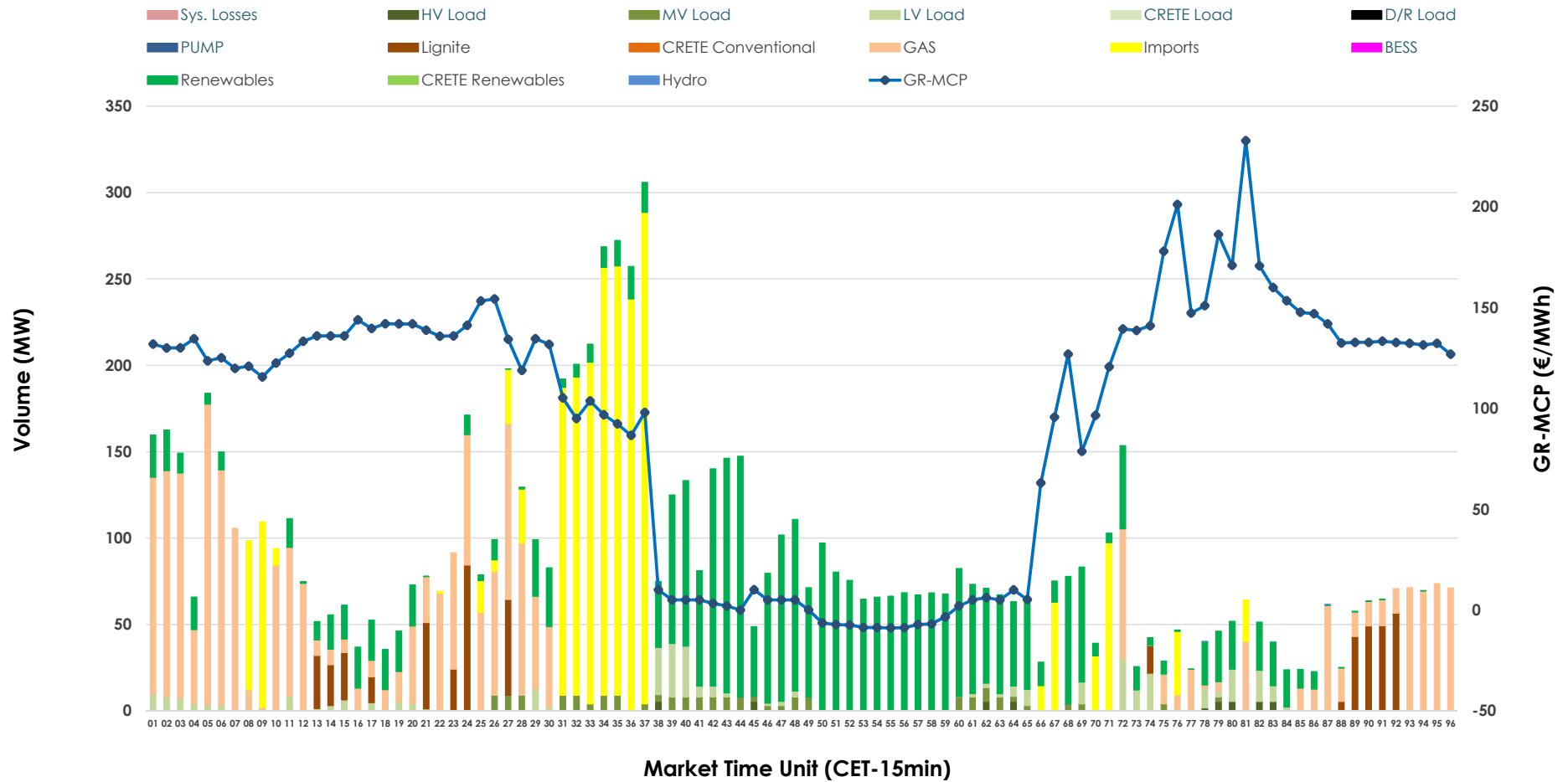


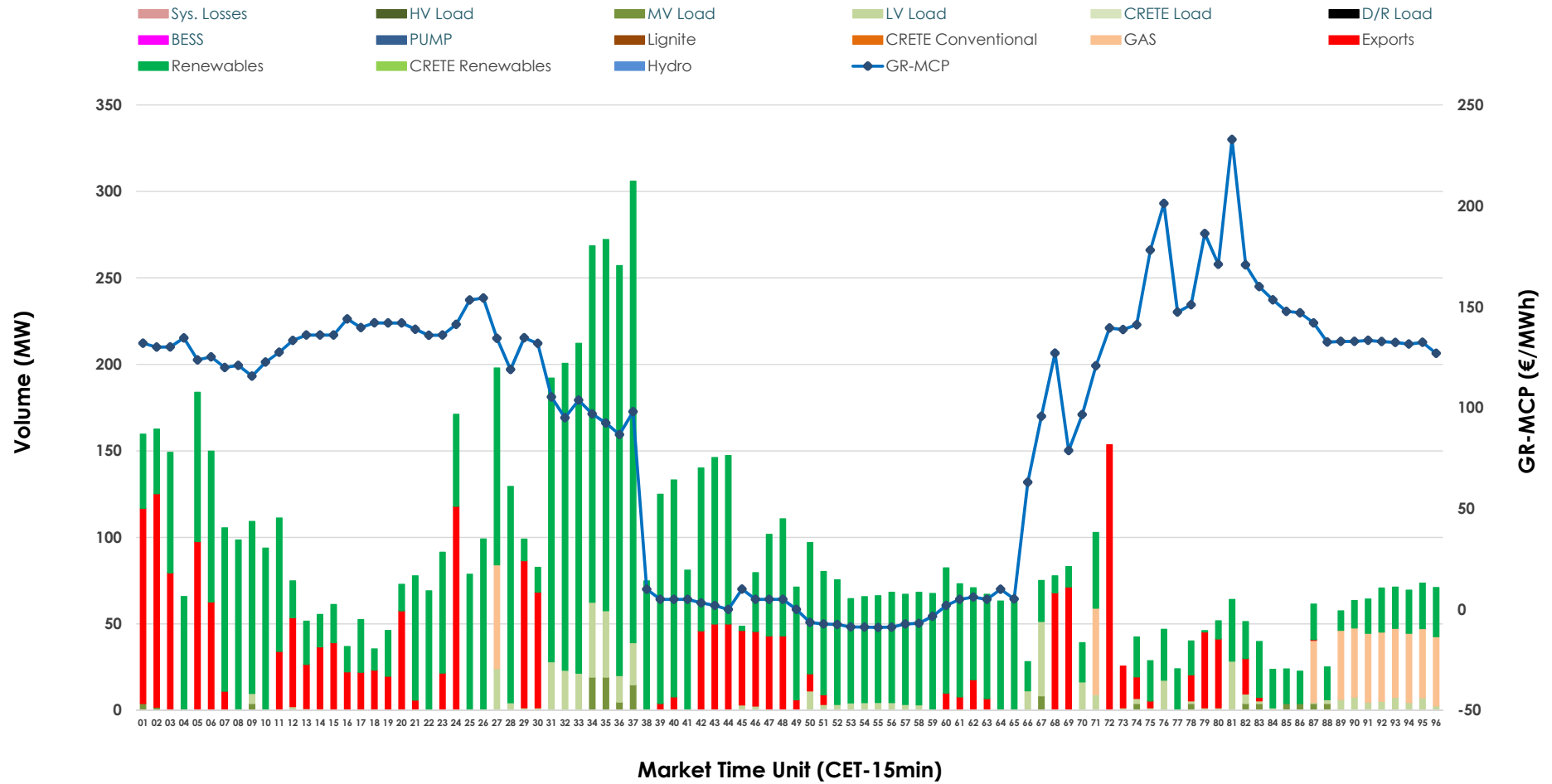


# IDA '2' Market Outlook

14.05.2026 IDA '2' Market - Sell



### 14.05.2026 IDA '2' Market - Buy



### GR Bidding Zone Weekly Figures

Delivery Day	08.05	09.05	10.05	11.05	12.05	13.05	14.05
	👇 -7%	👇 -20%	👇 -13%	👆 21%	👇 -22%	👆 16%	👉 0%
<b>Avg.MCP (€/MWh)</b>	123.78	99.47	86.97	105.00	82.23	95.03	94.61
<b>Max.MCP (€/MWh)</b>	167.32	196.67	177.64	191.00	199.04	189.00	232.85
<b>Min.MCP (€/MWh)</b>	66.00	-10.00	-0.02	-10.00	-4.56	-11.80	-8.88
	👇 -36%	👇 -5%	👇 -30%	👇 -11%	👆 103%	👇 -7%	👇 -5%
<b>Tot.Vol(GWh)</b>	4.16	3.95	2.77	2.46	4.98	4.64	4.40

### Trades by Order Type

Delivery Day		08.05	09.05	10.05	11.05	12.05	13.05	14.05	
<b>Ord Price Type</b>		<b>Sell &amp; Buy Trades in (GWh) per Price Type</b>							<b>(%)</b>
<b>PPT</b>	(S)	0.000	0.000	0.000	0.000	0.000	0.000	0.000	0.00%
<b>HBD</b>	(S)	1.774	1.276	0.755	0.988	2.445	1.576	1.666	75.70%
<b>BLK</b>	(S)	0.000	0.000	0.000	0.000	0.000	0.000	0.000	0.00%
<b>CPL</b>	(S)	0.303	0.700	0.629	0.241	0.044	0.743	0.535	24.30%
<b>PPT</b>	(B)	0.000	0.000	0.000	0.000	0.000	0.000	0.000	0.00%
<b>HBD</b>	(B)	1.038	1.407	1.055	1.094	1.663	2.095	1.709	77.68%
<b>BLK</b>	(B)	0.000	0.000	0.000	0.000	0.000	0.000	0.000	0.00%
<b>CPL</b>	(B)	1.039	0.570	0.329	0.135	0.826	0.224	0.491	22.32%
		<b>Sell &amp; Buy Orders Traded per Price Type</b>							<b>(%)</b>
<b>PPT</b>	(S)	0	0	0	0	0	0	0	0.00%
<b>HBD</b>	(S)	320	162	232	380	343	270	284	100.00%
<b>BLK</b>	(S)	0	0	0	0	0	0	0	0.00%
<b>PPT</b>	(B)	0	0	0	0	0	0	0	0.00%
<b>HBD</b>	(B)	354	486	434	529	453	469	353	100.00%
<b>BLK</b>	(B)	0	0	0	0	0	0	0	0.00%

- MCP** Market Clearing Price (€/MWh)
- PPT** Priority Price-Taking
- HBD** Hybrid
- BLK** Block
- CPL** Market Coupling Flow

### Trade's Volume Mix

	Sell - MWh	Buy - MWh	
<b>Lignite</b> (6.0%)	132	0	(0.0%)
<b>Crete Conv.</b> (0.0%)	0	0	(0.0%)
<b>Gas</b> (28.4%)	626	116	(5.3%)
<b>Hydro</b> (0.0%)	0	0	(0.0%)
<b>Imports</b> (24.3%)	535		
<b>RES</b> (34.3%)	756	1,445	(65.7%)
<b>Crete RES</b> (0.0%)	0	0	(0.0%)
<b>BESS</b> (0.0%)	0	0	(0.0%)
<b>HV Load</b> (0.5%)	11	0	(0.0%)
<b>MV Load</b> (2.3%)	50	27	(1.2%)
<b>LV Load</b> (4.1%)	90	120	(5.5%)
<b>Crete Load</b> (0.0%)	0	0	(0.0%)
<b>Pumping</b> (0.0%)	0	0	(0.0%)
<b>Exports</b>		491	(22.3%)
<b>Sys.Losses</b> (0.0%)	0	0	(0.0%)
<b>D/R Load</b> (0.0%)	0	0	(0.0%)

