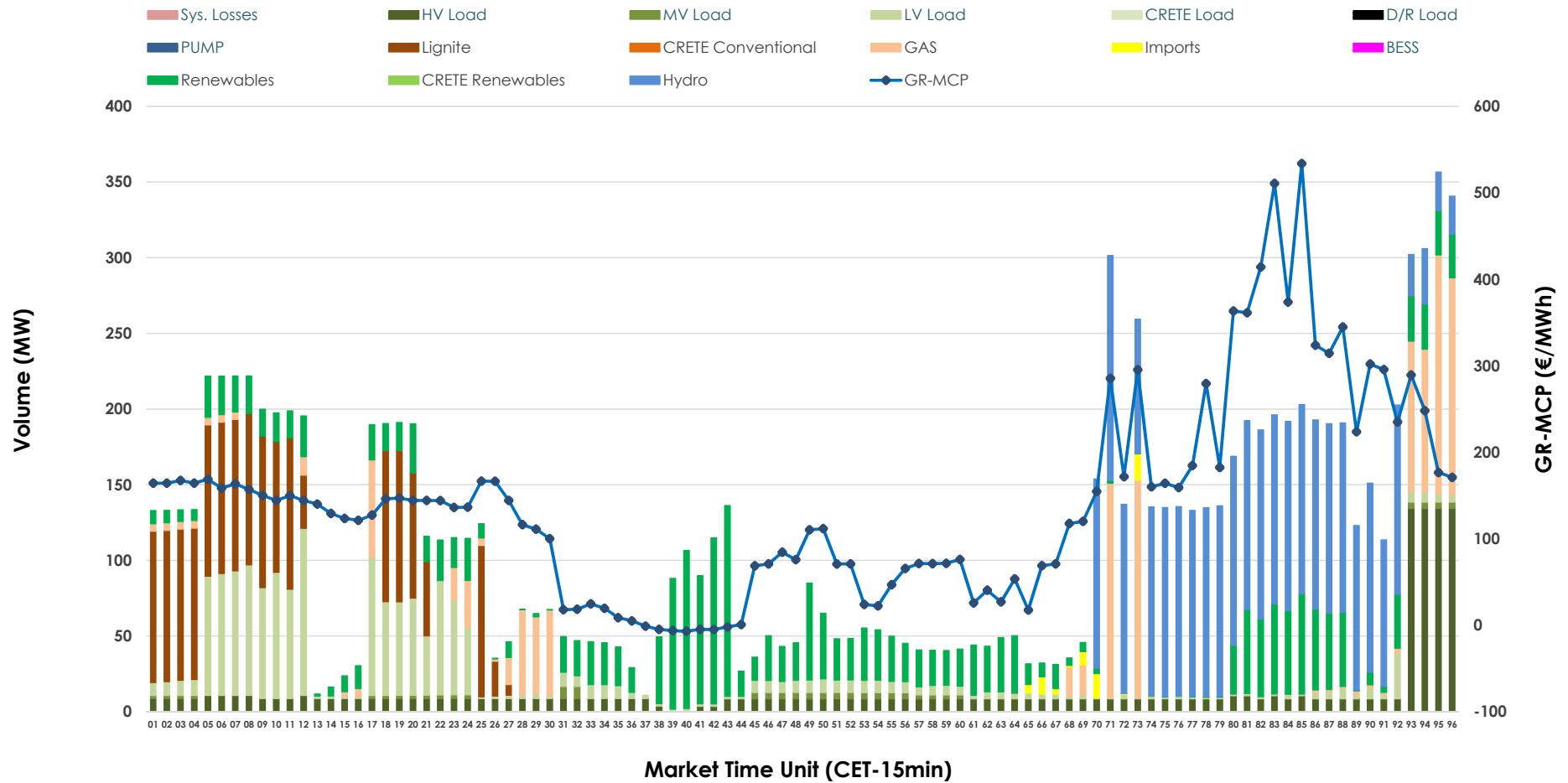


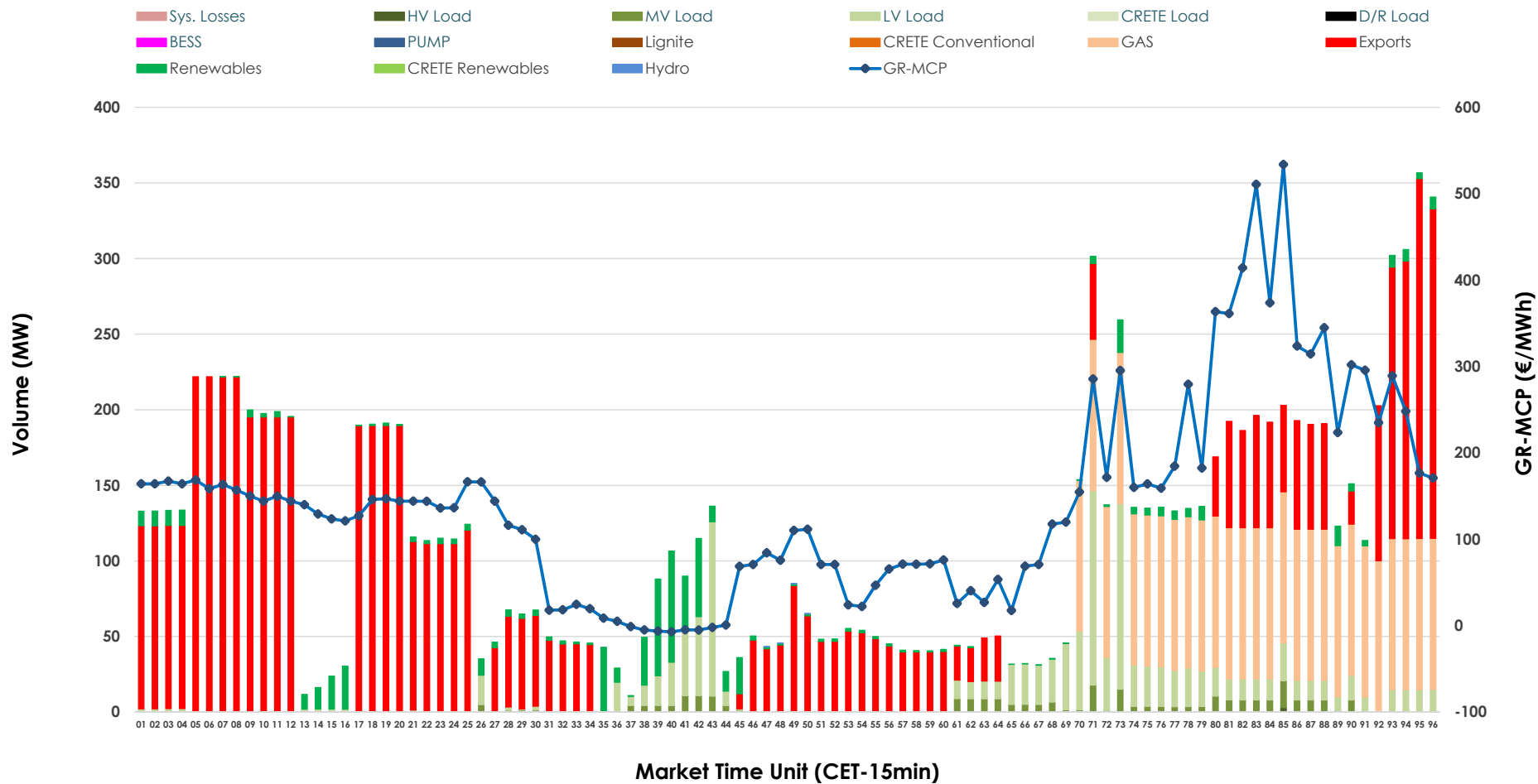


IDA '1' Market Outlook

30.06.2026 IDA '1' Market - Sell



30.06.2026 IDA '1' Market - Buy



GR Bidding Zone Weekly Figures

Delivery Day	24.06	25.06	26.06	27.06	28.06	29.06	30.06
	↗ 13%	↘ -17%	↘ -28%	↘ -8%	↘ -8%	↗ 25%	↗ 57%
Avg.MCP (€/MWh)	143.37	118.51	85.06	77.88	72.03	90.14	141.44
Max.MCP (€/MWh)	306.07	253.14	179.07	169.60	153.50	280.03	533.79
Min.MCP (€/MWh)	31.23	12.83	-10.01	-5.79	-3.92	-6.62	-7.05
	↗ 20%	↗ 35%	→ 1%	↘ -58%	↗ 106%	↘ -27%	↗ 47%
Tot.Vol(GWh)	4.44	6.00	6.04	2.55	5.24	3.81	5.61

Trades by Order Type

Delivery Day		24.06	25.06	26.06	27.06	28.06	29.06	30.06	
Ord Price Type		Sell & Buy Trades in (GWh) per Price Type							(%)
PPT	(S)	0.000	0.000	0.000	0.000	0.000	0.000	0.000	0.00%
HBD	(S)	1.684	2.810	2.829	1.036	1.770	1.804	2.790	99.42%
BLK	(S)	0.000	0.000	0.000	0.000	0.000	0.000	0.000	0.00%
CPL	(S)	0.537	0.190	0.189	0.238	0.850	0.102	0.016	0.58%
PPT	(B)	0.000	0.000	0.000	0.000	0.000	0.000	0.000	0.00%
HBD	(B)	1.302	1.442	1.613	1.053	1.728	1.323	1.229	43.80%
BLK	(B)	0.000	0.000	0.000	0.000	0.000	0.000	0.000	0.00%
CPL	(B)	0.919	1.558	1.405	0.222	0.892	0.582	1.577	56.20%
		Sell & Buy Orders Traded per Price Type							(%)
PPT	(S)	0	0	0	0	0	0	0	0.00%
HBD	(S)	307	444	590	332	382	538	567	100.00%
BLK	(S)	0	0	0	0	0	0	0	0.00%
PPT	(B)	0	0	0	0	0	0	0	0.00%
HBD	(B)	654	589	478	502	522	479	300	100.00%
BLK	(B)	0	0	0	0	0	0	0	0.00%

- MCP** Market Clearing Price (€/MWh)
- PPT** Priority Price-Taking
- HBD** Hybrid
- BLK** Block
- CPL** Market Coupling Flow

Trade's Volume Mix

	Sell - MWh	Buy - MWh	
Lignite (14.1%)	396	0	(0.0%)
Crete Conv. (0.0%)	0	0	(0.0%)
Gas (10.7%)	299	675	(24.1%)
Hydro (26.1%)	733	0	(0.0%)
Imports (0.6%)	16		
RES (22.1%)	619	165	(5.9%)
Crete RES (0.0%)	0	0	(0.0%)
BESS (0.0%)	0	0	(0.0%)
HV Load (11.7%)	328	1	(0.0%)
MV Load (1.1%)	30	72	(2.6%)
LV Load (13.7%)	384	316	(11.3%)
Crete Load (0.0%)	0	0	(0.0%)
Pumping (0.0%)	0	0	(0.0%)
Exports		1,577	(56.2%)
Sys.Losses (0.0%)	0	0	(0.0%)
D/R Load (0.0%)	0	0	(0.0%)

