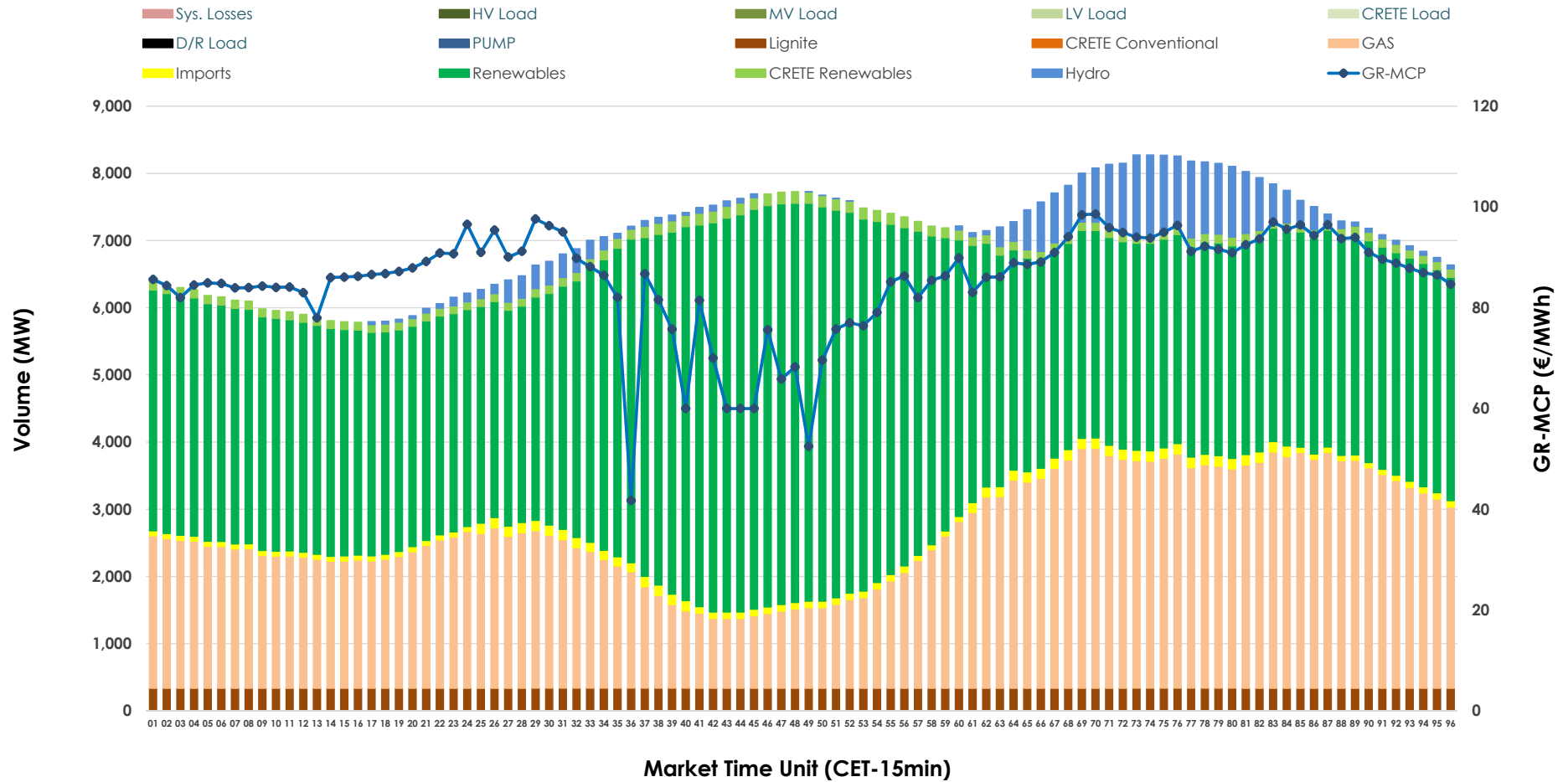


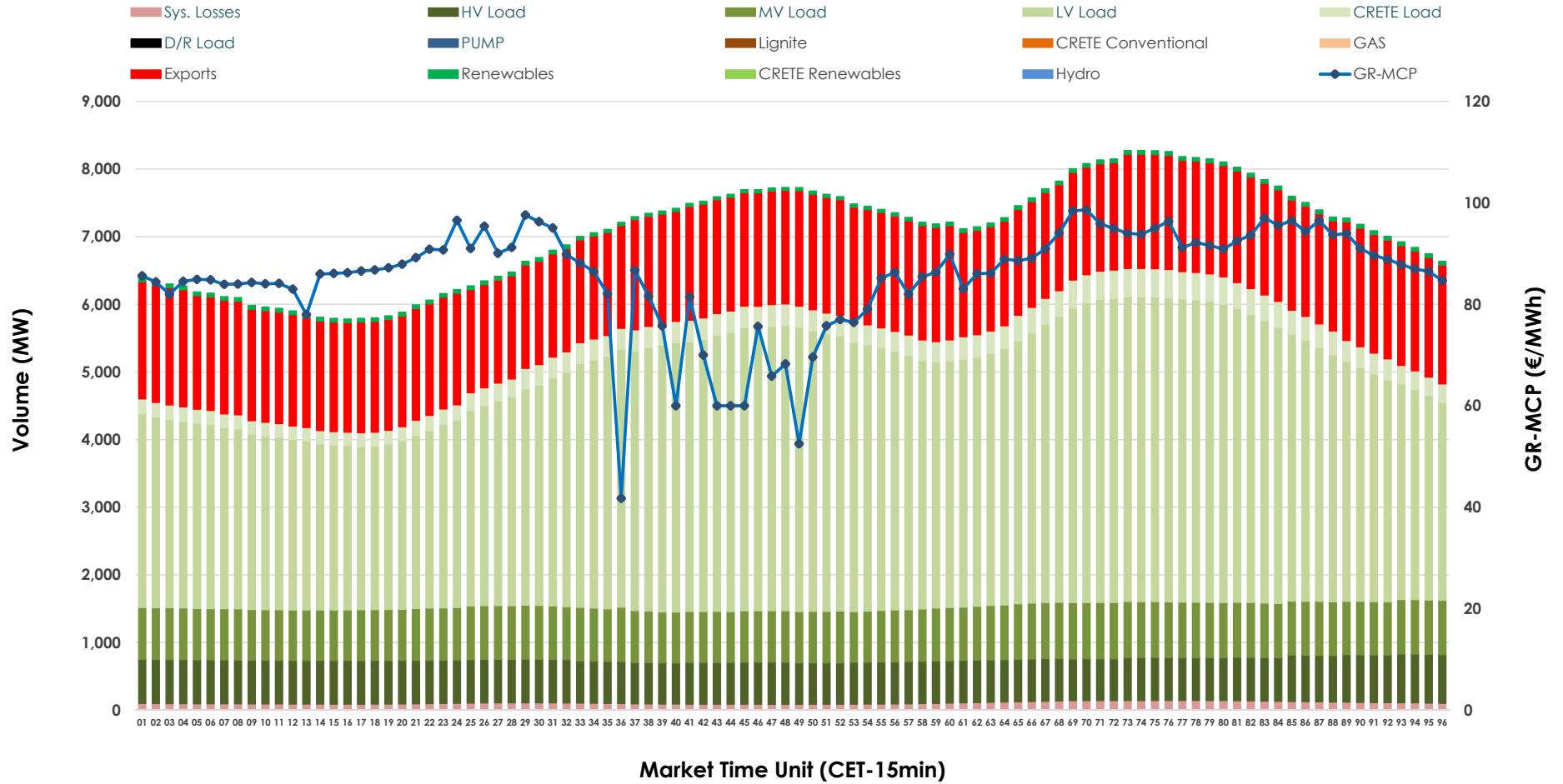


Day-Ahead Market Outlook

06.01.2026 Day-Ahead Market - Sell



06.01.2026 Day-Ahead Market - Buy



GR Bidding Zone Weekly Figures

Delivery Day	31.12	01.01	02.01	03.01	04.01	05.01	06.01
	↗ 5%	↘ -21%	↗ 19%	↘ -6%	↗ 2%	↘ -19%	↗ 16%
Avg.MCP (€/MWh)	100.45	79.44	94.59	89.27	90.93	73.73	85.48
Max.MCP (€/MWh)	182.30	140.47	125.85	114.95	123.30	108.12	98.60
Min.MCP (€/MWh)	74.41	10.23	26.67	74.94	60.00	0.01	41.75
	↗ 2%	↘ -3%	↗ 4%	↗ 6%	↘ -5%	↘ -1%	↘ -5%
Tot.Vol(GWh)	359.47	348.40	362.87	383.02	363.66	358.93	339.82

Trades by Order Type

Delivery Day		31.12	01.01	02.01	03.01	04.01	05.01	06.01	
Ord Price Type		Sell & Buy Trades in (GWh) per Price Type							(%)
PPT	(S)	53.153	50.133	53.556	67.086	68.347	69.218	62.058	36.52%
HBD	(S)	74.228	66.925	69.516	77.856	73.611	68.330	66.621	39.21%
BLK	(S)	44.790	39.393	44.873	46.419	39.715	41.920	41.230	24.27%
CPL	(S)	7.563	17.750	13.493	0.150	0.156	0.000	0.000	0.00%
PPT	(B)	15.549	15.514	15.498	16.042	16.629	14.953	14.186	8.35%
HBD	(B)	150.532	146.526	152.286	143.346	130.882	136.915	125.726	74.00%
BLK	(B)	0.000	0.000	0.000	0.000	0.000	0.000	0.000	0.00%
CPL	(B)	13.654	12.161	13.653	32.122	34.319	27.600	29.997	17.65%
		Sell & Buy Orders Traded per Price Type							(%)
PPT	(S)	1426	1345	1382	1356	1381	1408	1372	32.78%
HBD	(S)	2813	2590	2834	2742	2525	2371	2795	66.77%
BLK	(S)	17	13	18	20	19	13	19	0.45%
PPT	(B)	2361	2457	2370	2344	2484	2327	2309	35.95%
HBD	(B)	4103	4489	4132	4155	4106	4291	4113	64.05%
BLK	(B)	0	0	0	0	0	0	0	0.00%

- MCP** Market Clearing Price (€/MWh)
- PPT** Priority Price-Taking
- HBD** Hybrid
- BLK** Block
- CPL** Market Coupling Flow

Trade's Volume Mix

		Sell - MWh	Buy - MWh	
Lignite	(4.8%)	8,074	0	(0.0%)
Crete Conv.	(0.0%)	0	0	(0.0%)
Gas	(33.3%)	56,500	0	(0.0%)
Hydro	(3.6%)	6,078	0	(0.0%)
Imports	(1.6%)	2,673		
RES	(54.9%)	93,341	1,257	(0.7%)
Crete RES	(1.9%)	3,244	0	(0.0%)
HV Load	(0.0%)	0	15,382	(9.1%)
MV Load	(0.0%)	0	18,793	(11.1%)
LV Load	(0.0%)	0	85,153	(50.1%)
Crete Load	(0.0%)	0	7,282	(4.3%)
Pumping	(0.0%)	0	0	(0.0%)
Exports			39,436	(23.2%)
Sys.Losses	(0.0%)	0	2,606	(1.5%)
D/R Load	(0.0%)	0	0	(0.0%)

