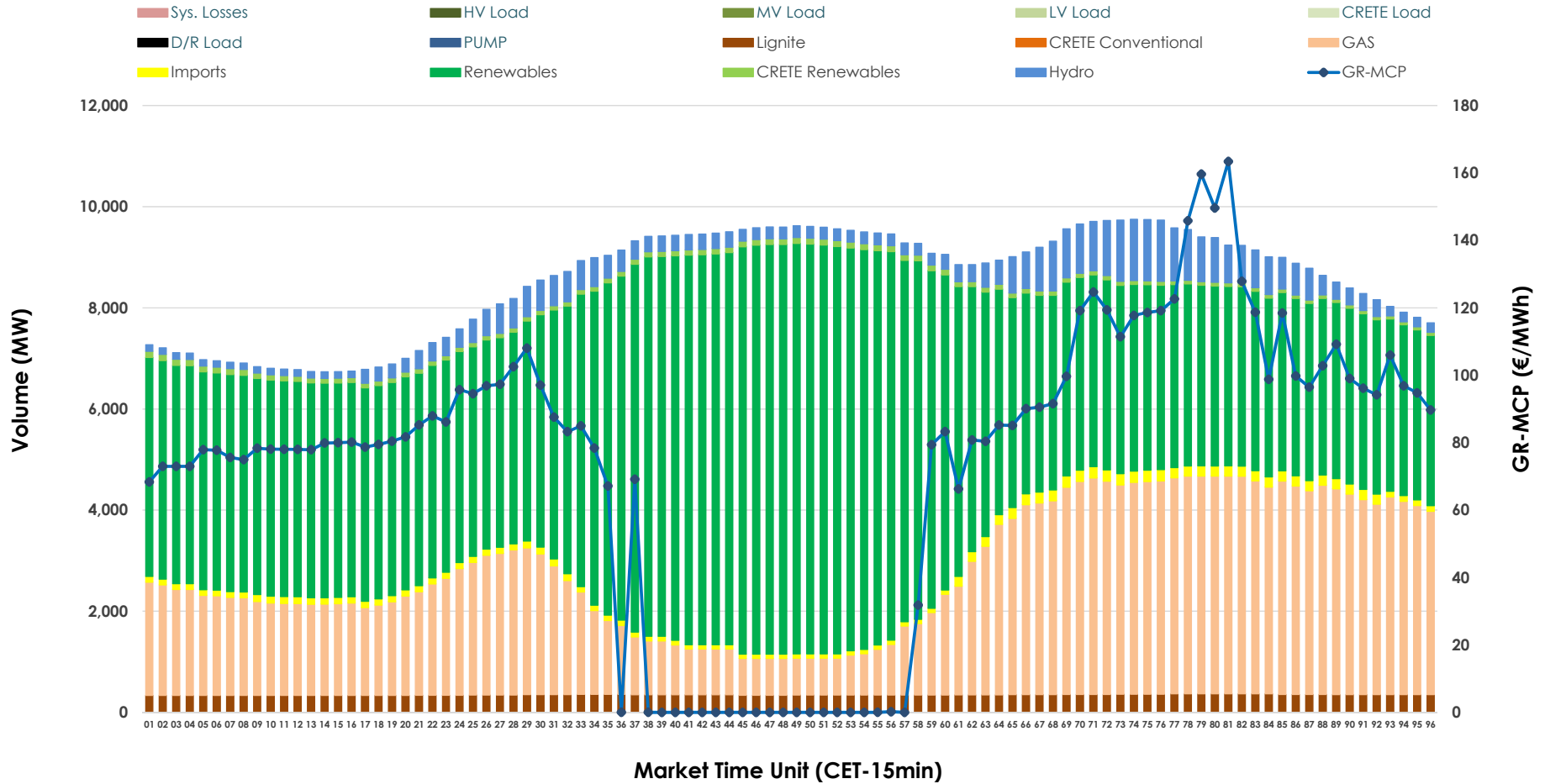


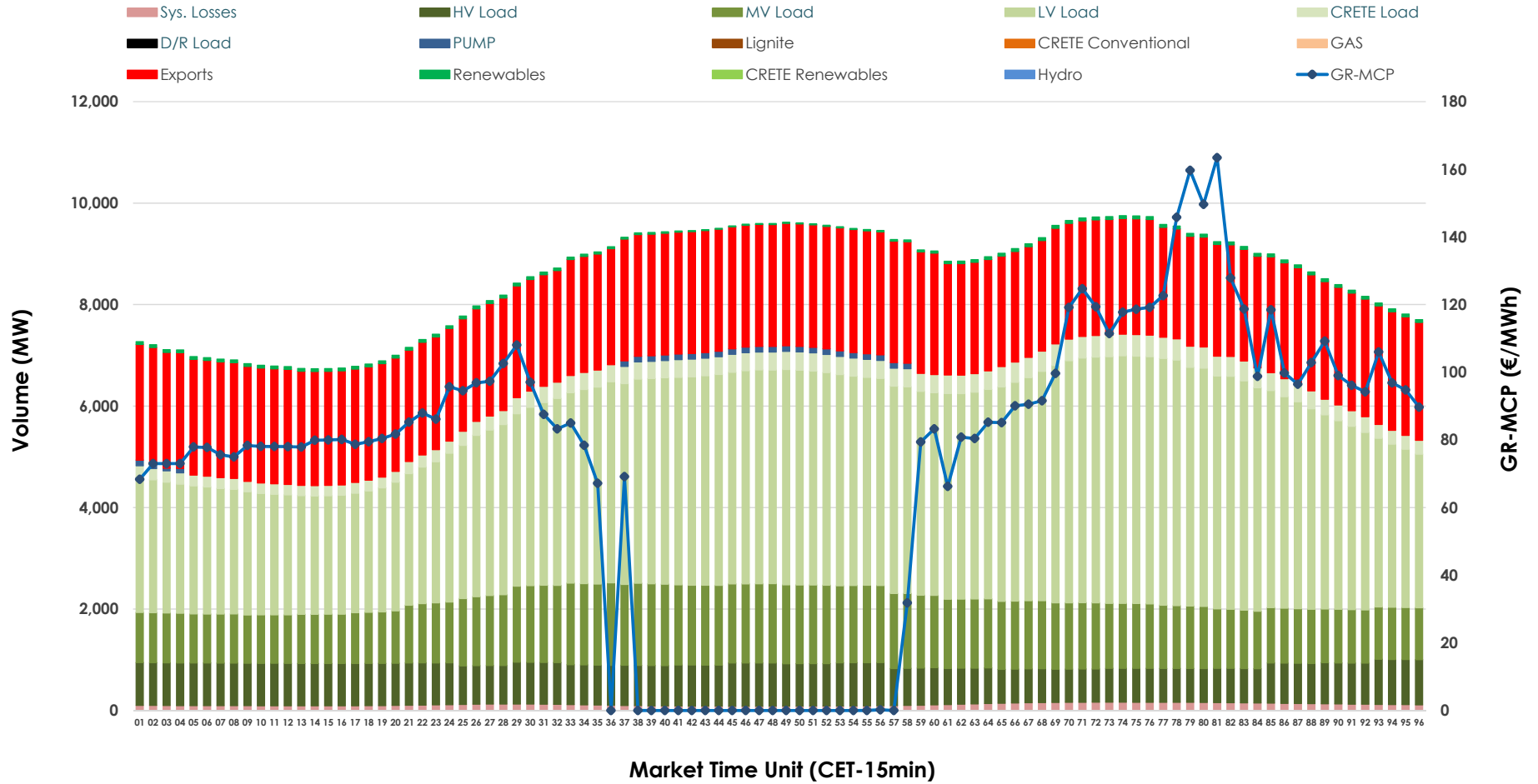


Day-Ahead Market Outlook

08.01.2026 Day-Ahead Market - Sell



08.01.2026 Day-Ahead Market - Buy



GR Bidding Zone Weekly Figures

Delivery Day	02.01	03.01	04.01	05.01	06.01	07.01	08.01
	↗ 19%	↘ -6%	↗ 2%	↘ -19%	↗ 16%	↘ 6%	↘ -19%
Avg.MCP (€/MWh)	94.59	89.27	90.93	73.73	85.48	90.70	73.45
Max.MCP (€/MWh)	125.85	114.95	123.30	108.12	98.60	138.50	163.42
Min.MCP (€/MWh)	26.67	74.94	60.00	0.01	41.75	65.00	0.00
	↗ 4%	↗ 6%	↘ -5%	↘ -1%	↘ -5%	↗ 12%	↗ 8%
Tot.Vol(GWh)	362.87	383.02	363.66	358.93	339.82	380.65	410.67

Trades by Order Type

Delivery Day		02.01	03.01	04.01	05.01	06.01	07.01	08.01	
Ord Price Type		Sell & Buy Trades in (GWh) per Price Type							(%)
PPT	(S)	53.556	67.086	68.347	69.218	62.058	69.541	76.678	37.34%
HBD	(S)	69.516	77.856	73.611	68.330	66.621	76.608	87.572	42.65%
BLK	(S)	44.873	46.419	39.715	41.920	41.230	44.176	41.087	20.01%
CPL	(S)	13.493	0.150	0.156	0.000	0.000	0.000	0.000	0.00%
PPT	(B)	15.498	16.042	16.629	14.953	14.186	14.479	14.380	7.00%
HBD	(B)	152.286	143.346	130.882	136.915	125.726	136.354	150.145	73.12%
BLK	(B)	0.000	0.000	0.000	0.000	0.000	0.000	0.000	0.00%
CPL	(B)	13.653	32.122	34.319	27.600	29.997	39.492	40.812	19.88%
		Sell & Buy Orders Traded per Price Type							(%)
PPT	(S)	1382	1356	1381	1408	1372	1426	1560	36.50%
HBD	(S)	2834	2742	2525	2371	2795	2885	2699	63.15%
BLK	(S)	18	20	19	13	19	20	15	0.35%
PPT	(B)	2370	2344	2484	2327	2309	2284	2267	35.02%
HBD	(B)	4132	4155	4106	4291	4113	4096	4207	64.98%
BLK	(B)	0	0	0	0	0	0	0	0.00%

MCP Market Clearing Price (€/MWh)
PPT Priority Price-Taking
HBD Hybrid
BLK Block
CPL Market Coupling Flow

Trade's Volume Mix

		Sell - MWh	Buy - MWh	
Lignite	(4.1%)	8,334	0	(0.0%)
Crete Conv.	(0.0%)	0	0	(0.0%)
Gas	(29.2%)	60,006	0	(0.0%)
Hydro	(5.2%)	10,589	0	(0.0%)
Imports	(1.6%)	3,384		
RES	(58.8%)	120,807	1,108	(0.5%)
Crete RES	(1.1%)	2,218	0	(0.0%)
HV Load	(0.0%)	0	18,797	(9.2%)
MV Load	(0.0%)	0	30,665	(14.9%)
LV Load	(0.0%)	0	88,673	(43.2%)
Crete Load	(0.0%)	0	7,706	(3.8%)
Pumping	(0.0%)	0	693	(0.3%)
Exports			54,899	(26.7%)
Sys.Losses	(0.0%)	0	2,797	(1.4%)
D/R Load	(0.0%)	0	0	(0.0%)

