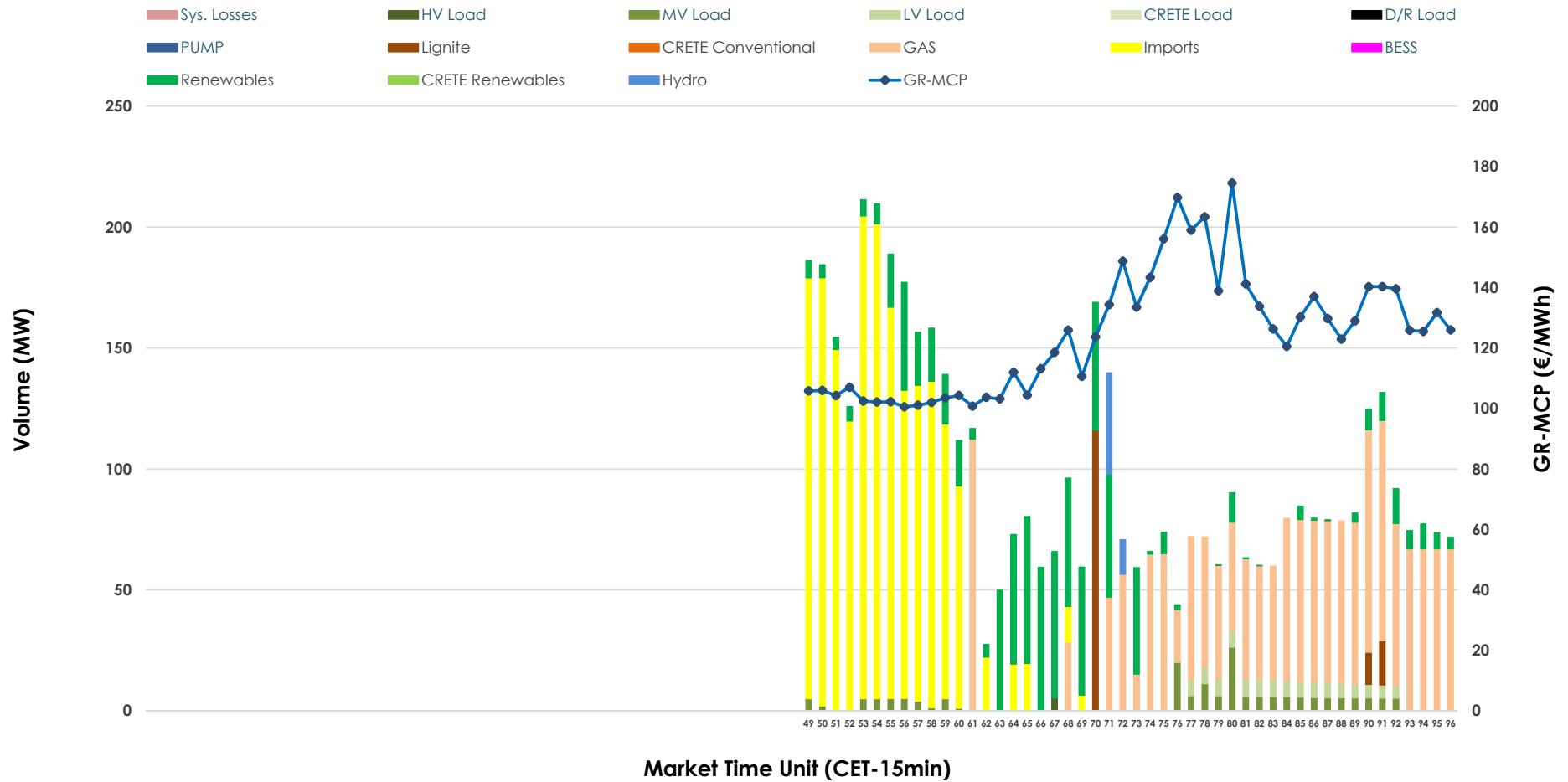


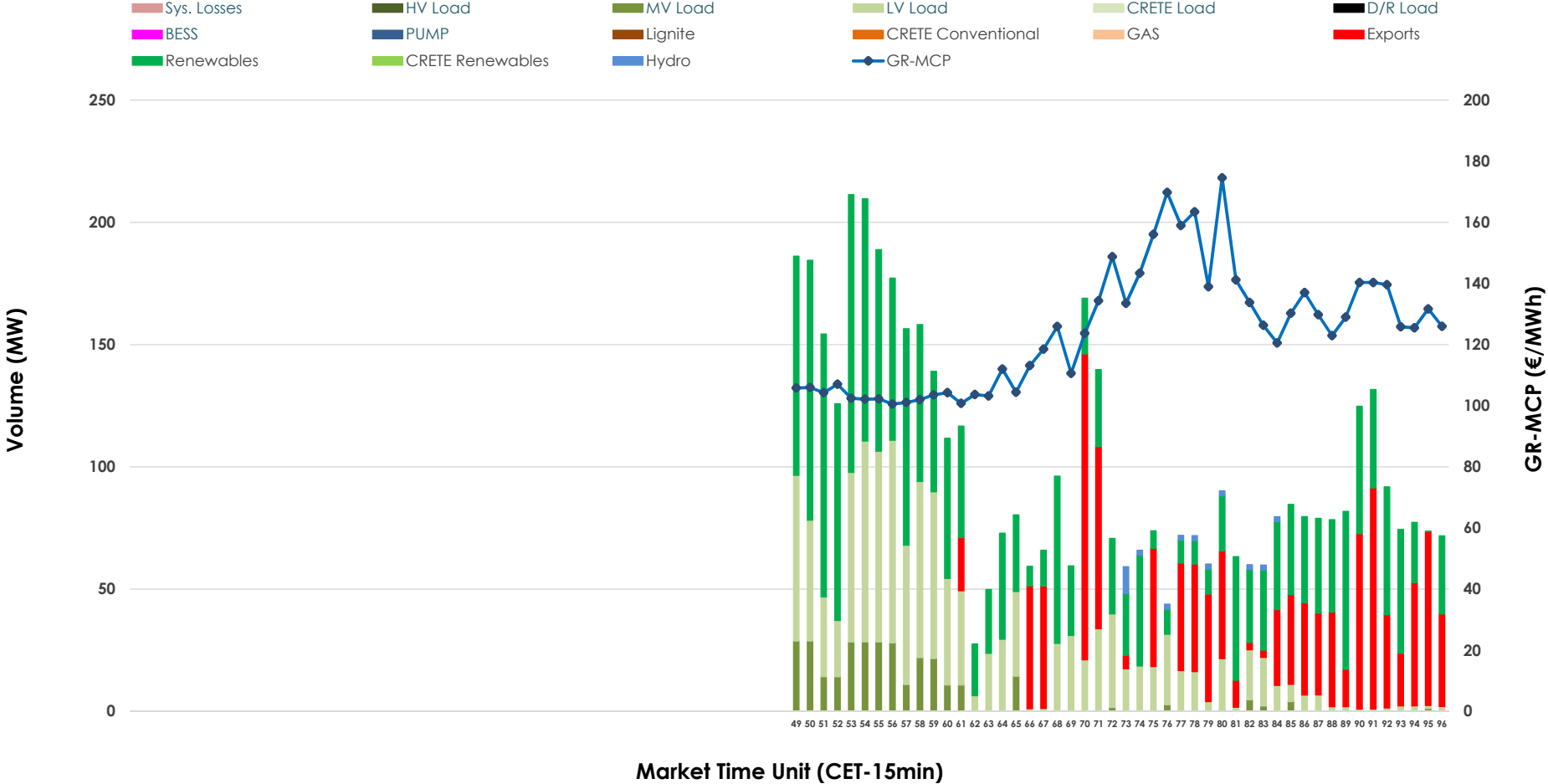


IDA '3' Market Outlook

07.05.2026 IDA '3' Market - Sell



07.05.2026 IDA '3' Market - Buy



GR Bidding Zone Weekly Figures

Delivery Day	01.05	02.05	03.05	04.05	05.05	06.05	07.05
	👇 -28%	👆 22%	👇 -1%	👆 80%	👇 -5%	👇 -12%	👆 22%
Avg.MCP (€/MWh)	56.53	68.99	68.12	122.88	116.60	102.41	124.57
Max.MCP (€/MWh)	184.92	172.68	167.98	306.49	295.47	203.55	174.56
Min.MCP (€/MWh)	-12.84	-56.03	-16.76	-16.16	-5.71	-8.92	100.57
	👇 -13%	👆 62%	➡️ 0%	👇 -8%	👇 -54%	👆 56%	👆 54%
Tot.Vol(GWh)	1.49	2.41	2.40	2.21	1.01	1.58	2.43

Trades by Order Type

Delivery Day		01.05	02.05	03.05	04.05	05.05	06.05	07.05	
Ord Price Type		Sell & Buy Trades in (GWh) per Price Type							(%)
PPT	(S)	0.000	0.000	0.000	0.000	0.000	0.000	0.000	0.00%
HBD	(S)	0.744	0.889	1.114	0.625	0.401	0.529	0.750	61.75%
BLK	(S)	0.000	0.000	0.000	0.000	0.000	0.000	0.000	0.00%
CPL	(S)	0.000	0.313	0.086	0.483	0.106	0.261	0.465	38.25%
PPT	(B)	0.000	0.000	0.000	0.000	0.000	0.000	0.000	0.00%
HBD	(B)	0.256	0.941	0.667	1.107	0.460	0.761	0.929	76.49%
BLK	(B)	0.000	0.000	0.000	0.000	0.000	0.000	0.000	0.00%
CPL	(B)	0.488	0.261	0.534	0.000	0.047	0.029	0.286	23.51%
		Sell & Buy Orders Traded per Price Type							(%)
PPT	(S)	0	0	0	0	0	0	0	0.00%
HBD	(S)	183	166	149	192	115	100	163	100.00%
BLK	(S)	0	0	0	0	0	0	0	0.00%
PPT	(B)	0	0	0	0	0	0	0	0.00%
HBD	(B)	88	157	94	179	211	154	223	100.00%
BLK	(B)	0	0	0	0	0	0	0	0.00%

- MCP** Market Clearing Price (€/MWh)
- PPT** Priority Price-Taking
- HBD** Hybrid
- BLK** Block
- CPL** Market Coupling Flow

Trade's Volume Mix

	Sell - MWh	Buy - MWh	
Lignite (3.0%)	37	0	(0.0%)
Crete Conv. (0.0%)	0	0	(0.0%)
Gas (34.6%)	420	0	(0.0%)
Hydro (1.2%)	14	7	(0.6%)
Imports (38.2%)	465		
RES (17.2%)	208	535	(44.0%)
Crete RES (0.0%)	0	0	(0.0%)
BESS (0.0%)	0	0	(0.0%)
HV Load (0.1%)	1	0	(0.0%)
MV Load (3.6%)	44	77	(6.3%)
LV Load (2.1%)	26	310	(25.5%)
Crete Load (0.0%)	0	0	(0.0%)
Pumping (0.0%)	0	0	(0.0%)
Exports		286	(23.5%)
Sys.Losses (0.0%)	0	0	(0.0%)
D/R Load (0.0%)	0	0	(0.0%)

