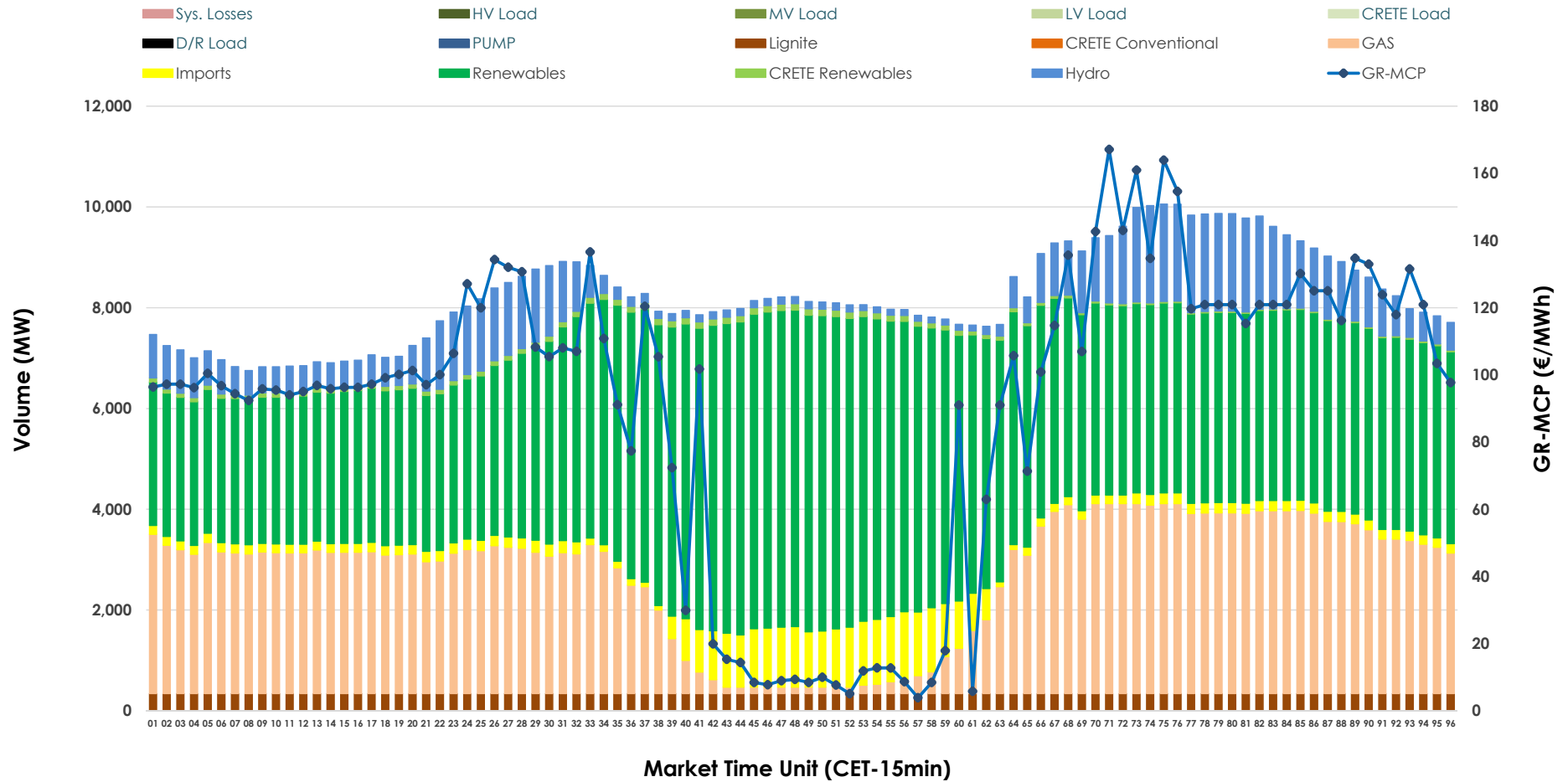


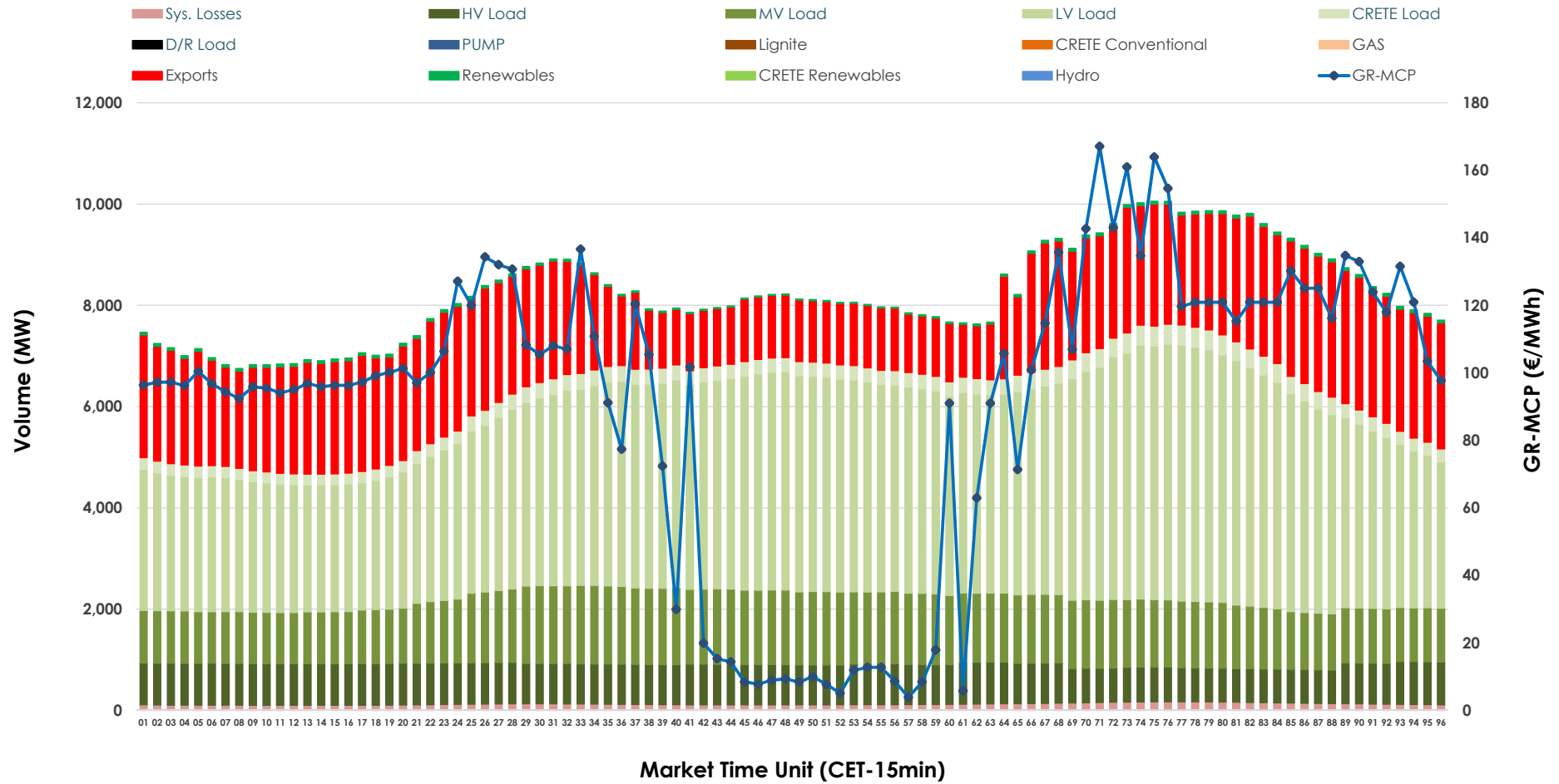


Day-Ahead Market Outlook

18.03.2026 Day-Ahead Market - Sell



18.03.2026 Day-Ahead Market - Buy



GR Bidding Zone Weekly Figures

Delivery Day	12.03	13.03	14.03	15.03	16.03	17.03	18.03
	↗ 16%	↘ -17%	↘ -6%	↘ -1%	↗ 20%	↘ 16%	↘ -22%
Avg.MCP (€/MWh)	108.24	89.55	84.39	83.39	100.39	116.20	90.85
Max.MCP (€/MWh)	247.52	215.45	183.48	164.03	199.21	212.05	167.11
Min.MCP (€/MWh)	0.00	-0.10	-6.30	-1.01	11.01	40.40	3.88
	↗ 5%	↗ 1%	↘ -4%	↘ -6%	↗ 4%	↗ 17%	⇒ 0%
Tot.Vol(GWh)	358.00	362.26	346.25	324.10	338.55	395.97	395.77

Trades by Order Type

Delivery Day		12.03	13.03	14.03	15.03	16.03	17.03	18.03	
Ord Price Type		Sell & Buy Trades in (GWh) per Price Type							(%)
PPT	(S)	79.190	88.806	81.903	74.010	71.660	84.654	94.196	47.60%
HBD	(S)	66.823	60.729	63.501	60.076	63.406	76.425	69.505	35.12%
BLK	(S)	29.533	31.267	27.207	27.936	29.721	36.898	28.203	14.25%
CPL	(S)	3.454	0.328	0.515	0.029	4.488	0.007	5.982	3.02%
PPT	(B)	13.965	14.237	14.168	12.939	13.684	14.050	13.302	6.72%
HBD	(B)	138.400	139.218	131.135	118.547	136.429	147.286	150.765	76.19%
BLK	(B)	0.000	0.000	0.000	0.000	0.000	0.000	0.000	0.00%
CPL	(B)	26.635	27.674	27.823	30.565	19.163	36.648	33.819	17.09%
		Sell & Buy Orders Traded per Price Type							(%)
PPT	(S)	1979	1976	1847	1792	1814	1949	1927	39.25%
HBD	(S)	3046	2552	2666	2723	3131	3142	2970	60.50%
BLK	(S)	14	14	12	12	10	21	12	0.24%
PPT	(B)	2311	2364	2364	2341	2255	2260	2251	34.69%
HBD	(B)	3862	4085	3996	3981	3949	4043	4238	65.31%
BLK	(B)	0	0	0	0	0	0	0	0.00%

MCP Market Clearing Price (€/MWh)
PPT Priority Price-Taking
HBD Hybrid
BLK Block
CPL Market Coupling Flow

Trade's Volume Mix

		Sell - MWh	Buy - MWh	
Lignite	(4.1%)	8,160	0	(0.0%)
Crete Conv.	(0.0%)	0	0	(0.0%)
Gas	(29.0%)	57,464	0	(0.0%)
Hydro	(9.6%)	19,072	0	(0.0%)
Imports	(4.9%)	9,687		
RES	(51.3%)	101,591	1,072	(0.5%)
Crete RES	(1.0%)	1,912	0	(0.0%)
HV Load	(0.0%)	0	18,766	(9.5%)
MV Load	(0.0%)	0	30,826	(15.6%)
LV Load	(0.0%)	0	89,741	(45.3%)
Crete Load	(0.0%)	0	7,062	(3.6%)
Pumping	(0.0%)	0	0	(0.0%)
Exports			47,452	(24.0%)
Sys.Losses	(0.0%)	0	2,969	(1.5%)
D/R Load	(0.0%)	0	0	(0.0%)

