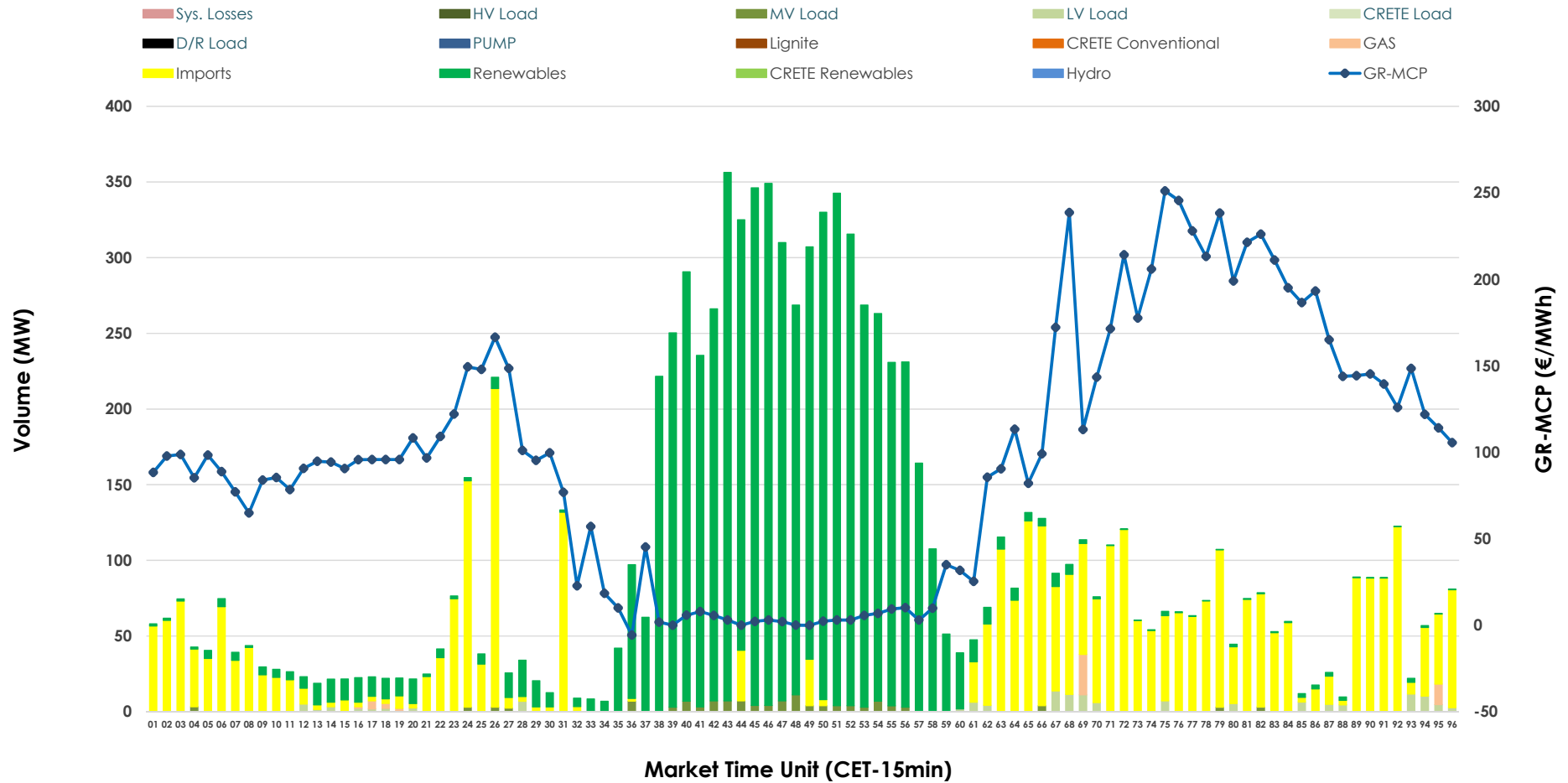


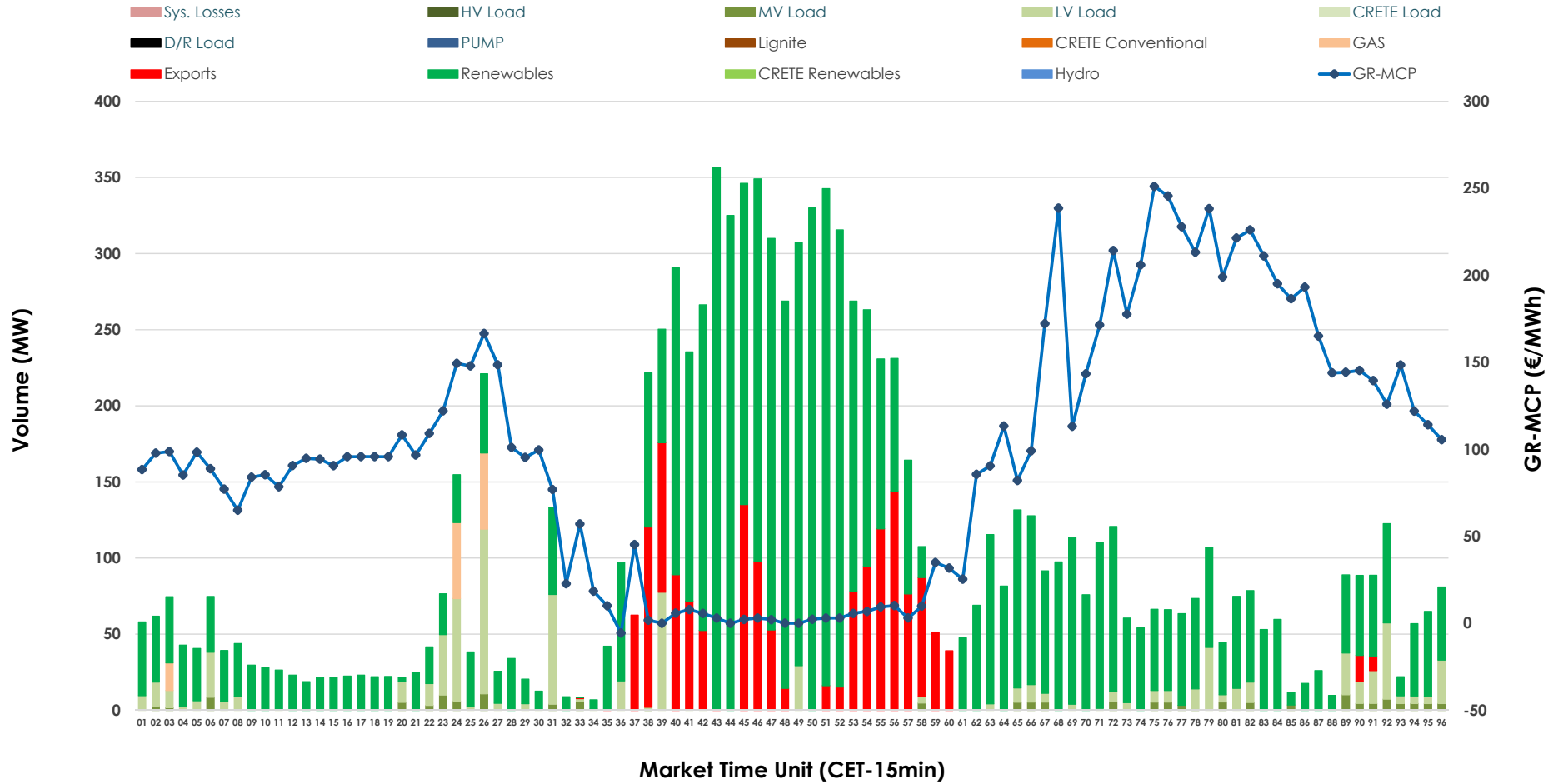


IDA '2' Market Outlook

11.03.2026 IDA '2' Market - Sell



11.03.2026 IDA '2' Market - Buy



GR Bidding Zone Weekly Figures

Delivery Day	05.03	06.03	07.03	08.03	09.03	10.03	11.03
	↗ 3%	↘ -18%	↗ 1%	↘ -5%	↗ 6%	↘ -2%	↗ 23%
Avg.MCP (€/MWh)	97.40	79.46	80.40	76.18	80.76	79.21	97.04
Max.MCP (€/MWh)	207.30	210.88	165.43	151.84	243.16	241.49	251.11
Min.MCP (€/MWh)	4.08	-22.00	-20.95	-15.92	-12.08	-20.20	-5.65
	↘ -13%	↗ 28%	↗ 42%	↘ -9%	↗ 17%	↘ -8%	↔ 0%
Tot.Vol(GWh)	2.89	3.70	5.27	4.80	5.63	5.15	5.13

Trades by Order Type

Delivery Day		05.03	06.03	07.03	08.03	09.03	10.03	11.03	
Ord Price Type		Sell & Buy Trades in (GWh) per Price Type							(%)
PPT	(S)	0.000	0.000	0.000	0.000	0.000	0.000	0.000	0.00%
HBD	(S)	0.976	1.168	2.449	2.243	2.807	2.427	1.646	64.19%
BLK	(S)	0.000	0.000	0.000	0.000	0.000	0.000	0.000	0.00%
CPL	(S)	0.469	0.684	0.188	0.158	0.009	0.150	0.918	35.81%
PPT	(B)	0.000	0.000	0.000	0.000	0.000	0.000	0.000	0.00%
HBD	(B)	1.145	1.085	2.455	2.050	1.503	1.250	2.181	85.06%
BLK	(B)	0.000	0.000	0.000	0.000	0.000	0.000	0.000	0.00%
CPL	(B)	0.301	0.766	0.181	0.351	1.313	1.327	0.383	14.94%
		Sell & Buy Orders Traded per Price Type							(%)
PPT	(S)	0	0	0	0	0	0	0	0.00%
HBD	(S)	267	332	177	400	231	272	338	100.00%
BLK	(S)	0	0	0	0	0	0	0	0.00%
PPT	(B)	0	0	0	0	0	0	0	0.00%
HBD	(B)	450	501	607	554	640	443	362	100.00%
BLK	(B)	0	0	0	0	0	0	0	0.00%

- MCP** Market Clearing Price (€/MWh)
- PPT** Priority Price-Taking
- HBD** Hybrid
- BLK** Block
- CPL** Market Coupling Flow

Trade's Volume Mix

		Sell - MWh	Buy - MWh	
Lignite	(0.0%)	0	0	(0.0%)
Crete Conv.	(0.0%)	0	0	(0.0%)
Gas	(0.5%)	13	30	(1.2%)
Hydro	(0.0%)	0	0	(0.0%)
Imports	(35.8%)	918		
RES	(61.1%)	1,567	1,897	(74.0%)
Crete RES	(0.0%)	0	0	(0.0%)
HV Load	(0.0%)	0	0	(0.0%)
MV Load	(1.2%)	31	39	(1.5%)
LV Load	(1.4%)	35	215	(8.4%)
Crete Load	(0.0%)	0	0	(0.0%)
Pumping	(0.0%)	0	0	(0.0%)
Exports			383	(14.9%)
Sys.Losses	(0.0%)	0	0	(0.0%)
D/R Load	(0.0%)	0	0	(0.0%)

