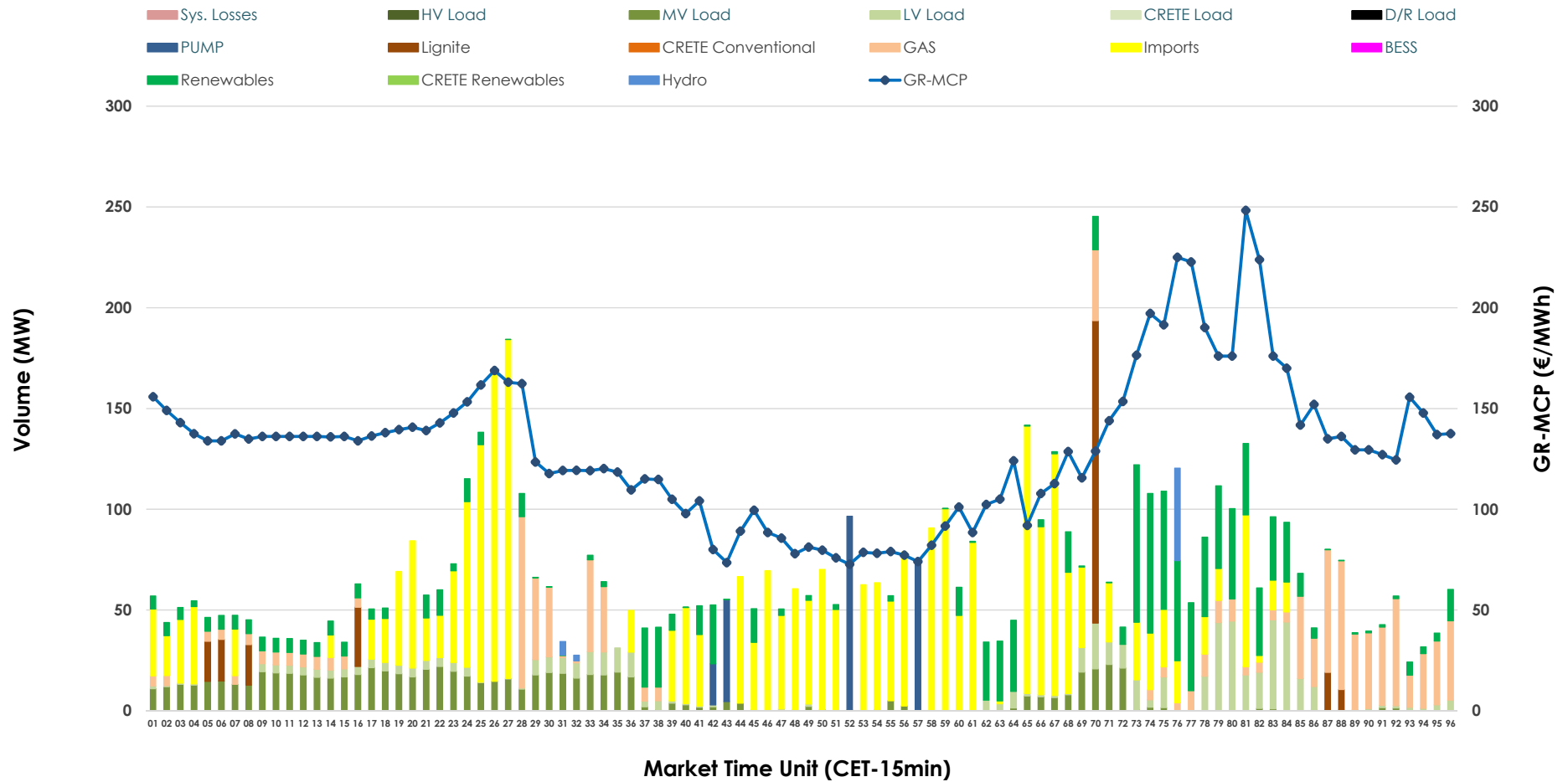


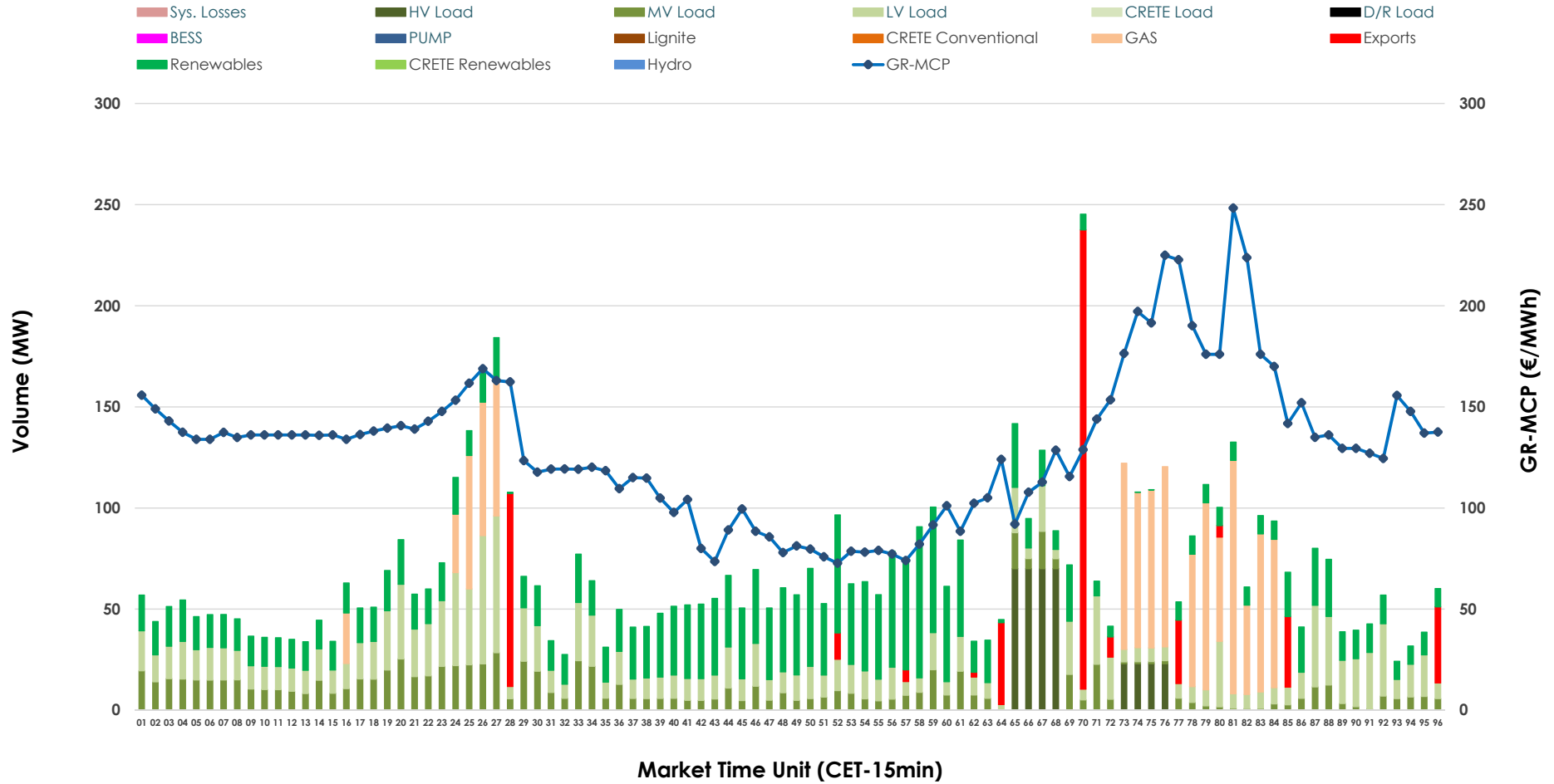


IDA '1' Market Outlook

19.05.2026 IDA '1' Market - Sell



19.05.2026 IDA '1' Market - Buy



GR Bidding Zone Weekly Figures

Delivery Day	13.05	14.05	15.05	16.05	17.05	18.05	19.05
	↗ 16%	↘ -2%	→ 0%	↘ -14%	↘ -5%		
Avg.MCP (€/MWh)	93.55	91.29	91.30	78.20	73.99	N/M	130.04
Max.MCP (€/MWh)	186.71	234.22	178.58	130.66	168.63	N/M	248.28
Min.MCP (€/MWh)	-11.78	-11.50	-4.99	-4.75	-4.52	N/M	72.72
	↘ -5%	↘ -25%	↘ -14%	↗ 69%	↘ -9%		
Tot.Vol(GWh)	3.76	2.83	2.44	4.12	3.74	N/M	3.33

Trades by Order Type

Delivery Day		13.05	14.05	15.05	16.05	17.05	18.05	19.05	
Ord Price Type		Sell & Buy Trades in (GWh) per Price Type							(%)
PPT	(S)	0.000	0.000	0.000	0.000	0.000		0.000	0.00%
HBD	(S)	1.826	1.325	1.004	1.800	1.492		0.966	58.08%
BLK	(S)	0.000	0.000	0.000	0.000	0.000		0.000	0.00%
CPL	(S)	0.053	0.091	0.217	0.262	0.379		0.697	41.92%
PPT	(B)	0.000	0.000	0.000	0.000	0.000		0.000	0.00%
HBD	(B)	1.642	1.306	1.081	1.025	1.845		1.537	92.42%
BLK	(B)	0.000	0.000	0.000	0.000	0.000		0.000	0.00%
CPL	(B)	0.237	0.110	0.140	1.037	0.027		0.126	7.58%
		Sell & Buy Orders Traded per Price Type							(%)
PPT	(S)	0	0	0	0	0		0	0.00%
HBD	(S)	447	201	260	224	227		393	100.00%
BLK	(S)	0	0	0	0	0		0	0.00%
PPT	(B)	0	0	0	0	0		0	0.00%
HBD	(B)	653	649	818	663	679		796	100.00%
BLK	(B)	0	0	0	0	0		0	0.00%

- MCP** Market Clearing Price (€/MWh)
- PPT** Priority Price-Taking
- HBD** Hybrid
- BLK** Block
- CPL** Market Coupling Flow

Trade's Volume Mix

	Sell - MWh	Buy - MWh	
Lignite (4.0%)	67	0	(0.0%)
Crete Conv. (0.0%)	0	0	(0.0%)
Gas (13.8%)	229	277	(16.7%)
Hydro (0.8%)	14	0	(0.0%)
Imports (41.9%)	697		
RES (16.2%)	269	521	(31.3%)
Crete RES (0.0%)	0	0	(0.0%)
BESS (0.0%)	0	0	(0.0%)
HV Load (0.0%)	0	93	(5.6%)
MV Load (11.4%)	190	241	(14.5%)
LV Load (8.2%)	137	406	(24.4%)
Crete Load (0.0%)	0	0	(0.0%)
Pumping (3.6%)	60	0	(0.0%)
Exports		126	(7.6%)
Sys.Losses (0.0%)	0	0	(0.0%)
D/R Load (0.0%)	0	0	(0.0%)

