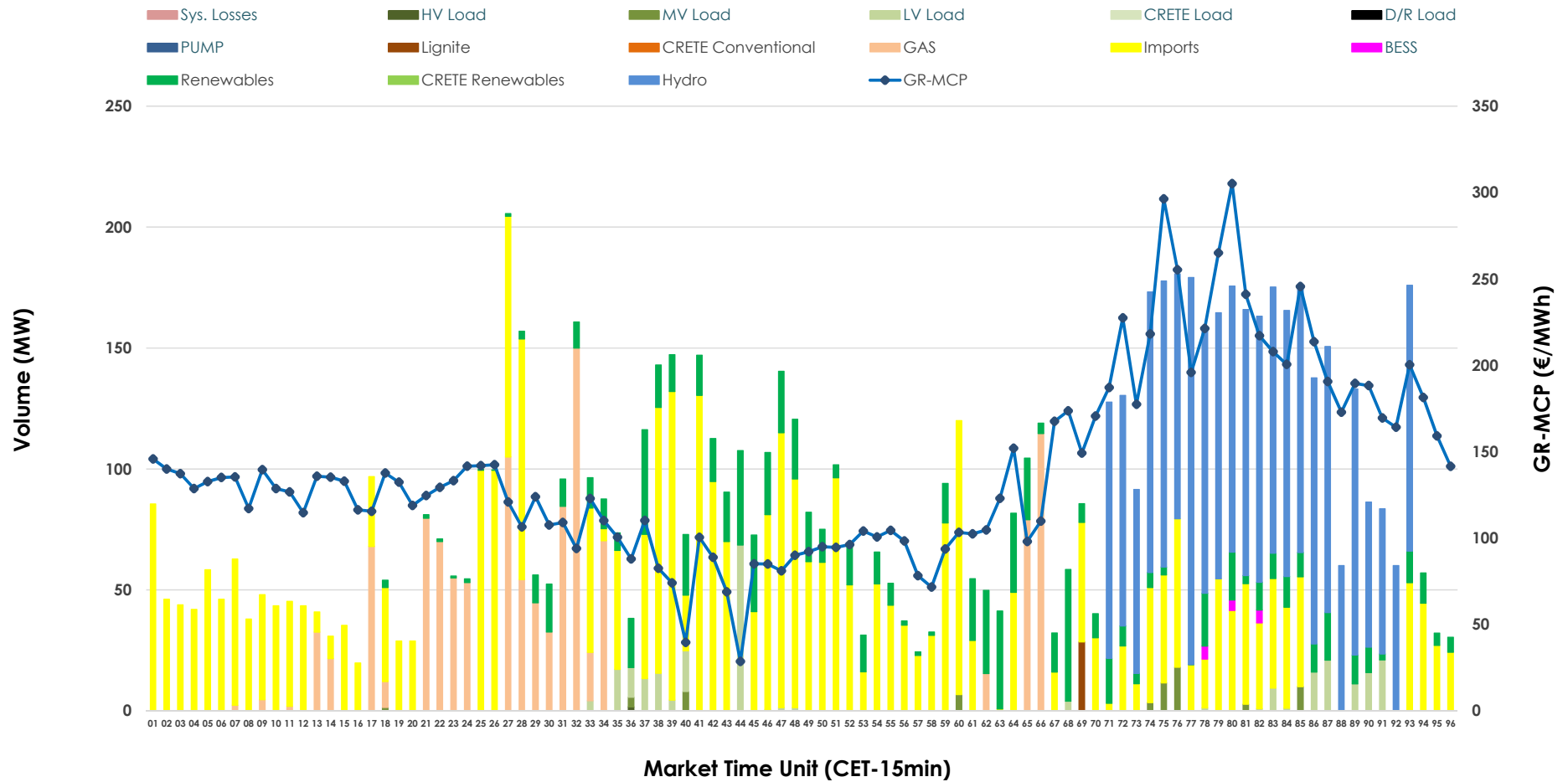


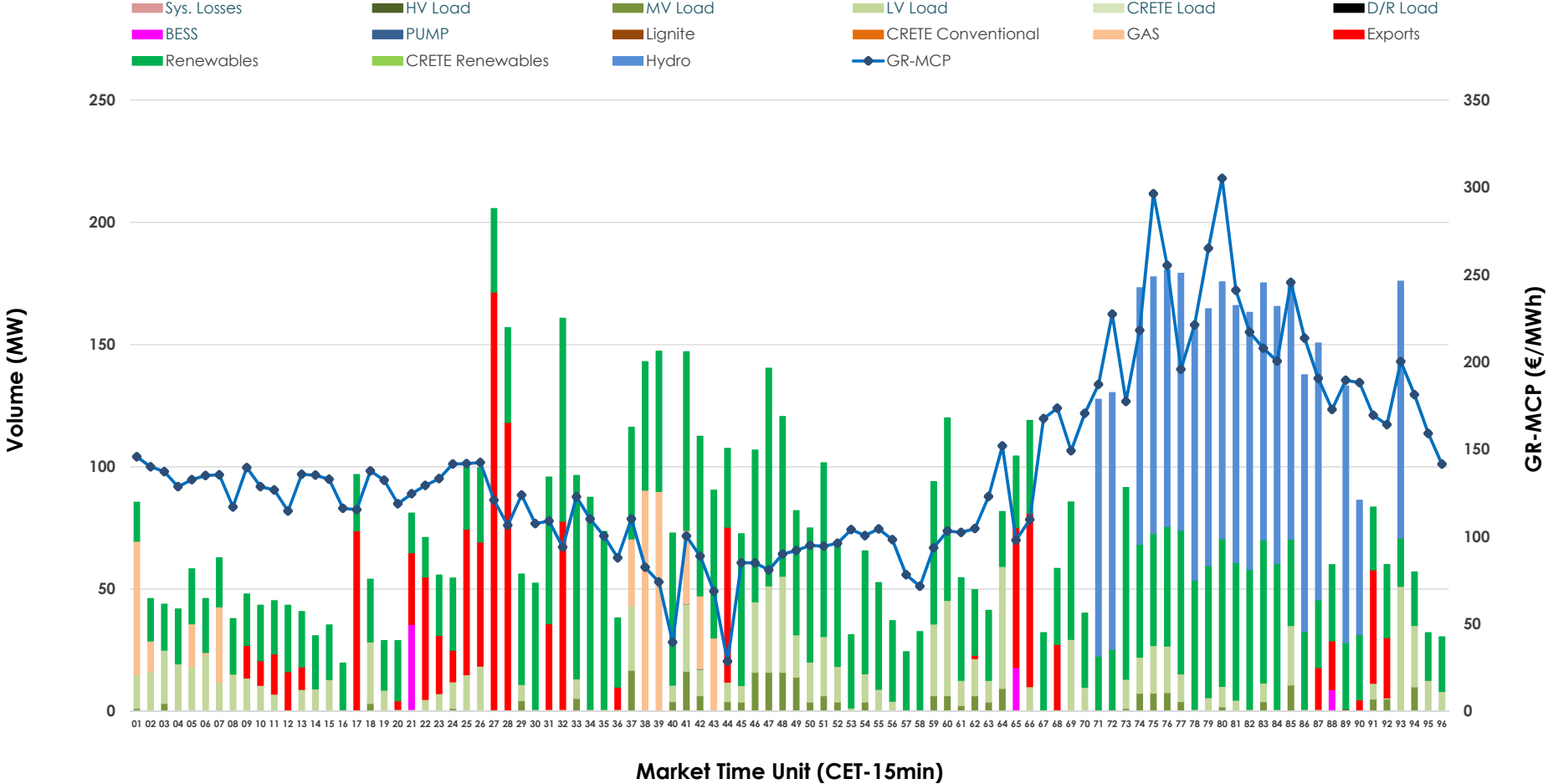


IDA '2' Market Outlook

02.07.2026 IDA '2' Market - Sell



02.07.2026 IDA '2' Market - Buy



GR Bidding Zone Weekly Figures

Delivery Day	26.06	27.06	28.06	29.06	30.06	01.07	02.07
	👉 -27%	👈 1%	👉 -22%	👈 50%	👈 37%	👉 20%	👉 -17%
Avg.MCP (€/MWh)	86.86	87.62	68.04	101.76	139.08	167.17	139.09
Max.MCP (€/MWh)	187.76	198.96	147.37	280.03	509.29	434.88	305.21
Min.MCP (€/MWh)	-10.00	-9.13	-11.32	-0.38	-9.83	72.11	28.63
	👇 -38%	👈 87%	👉 -28%	👉 -15%	👈 6%	👈 26%	👈 0%
Tot.Vol(GWh)	2.82	5.28	3.83	3.24	3.44	4.35	4.33

Trades by Order Type

Delivery Day		26.06	27.06	28.06	29.06	30.06	01.07	02.07	
Ord Price Type		Sell & Buy Trades in (GWh) per Price Type							(%)
PPT	(S)	0.000	0.000	0.000	0.000	0.000	0.000	0.000	0.00%
HBD	(S)	1.343	2.496	0.917	1.523	1.318	1.207	1.220	56.32%
BLK	(S)	0.000	0.000	0.000	0.000	0.000	0.000	0.000	0.00%
CPL	(S)	0.067	0.145	0.996	0.095	0.404	0.966	0.946	43.68%
PPT	(B)	0.000	0.000	0.000	0.000	0.000	0.000	0.000	0.00%
HBD	(B)	0.947	1.304	1.685	0.757	1.236	1.788	1.888	87.17%
BLK	(B)	0.000	0.000	0.000	0.000	0.000	0.000	0.000	0.00%
CPL	(B)	0.462	1.337	0.228	0.861	0.486	0.385	0.278	12.83%
		Sell & Buy Orders Traded per Price Type							(%)
PPT	(S)	0	0	0	0	0	0	0	0.00%
HBD	(S)	326	470	249	424	315	309	223	100.00%
BLK	(S)	0	0	0	0	0	0	0	0.00%
PPT	(B)	0	0	0	0	0	0	0	0.00%
HBD	(B)	292	476	447	250	366	613	569	100.00%
BLK	(B)	0	0	0	0	0	0	0	0.00%

- MCP** Market Clearing Price (€/MWh)
- PPT** Priority Price-Taking
- HBD** Hybrid
- BLK** Block
- CPL** Market Coupling Flow

Trade's Volume Mix

	Sell - MWh	Buy - MWh	
Lignite (0.3%)	7	0	(0.0%)
Crete Conv. (0.0%)	0	0	(0.0%)
Gas (13.5%)	292	103	(4.8%)
Hydro (26.9%)	583	486	(22.4%)
Imports (43.7%)	946		
RES (11.6%)	252	960	(44.3%)
Crete RES (0.0%)	0	0	(0.0%)
BESS (0.2%)	4	15	(0.7%)
HV Load (0.0%)	0	0	(0.0%)
MV Load (0.8%)	16	62	(2.9%)
LV Load (3.0%)	64	261	(12.1%)
Crete Load (0.0%)	0	0	(0.0%)
Pumping (0.0%)	0	0	(0.0%)
Exports		278	(12.8%)
Sys.Losses (0.0%)	0	0	(0.0%)
D/R Load (0.0%)	0	0	(0.0%)

