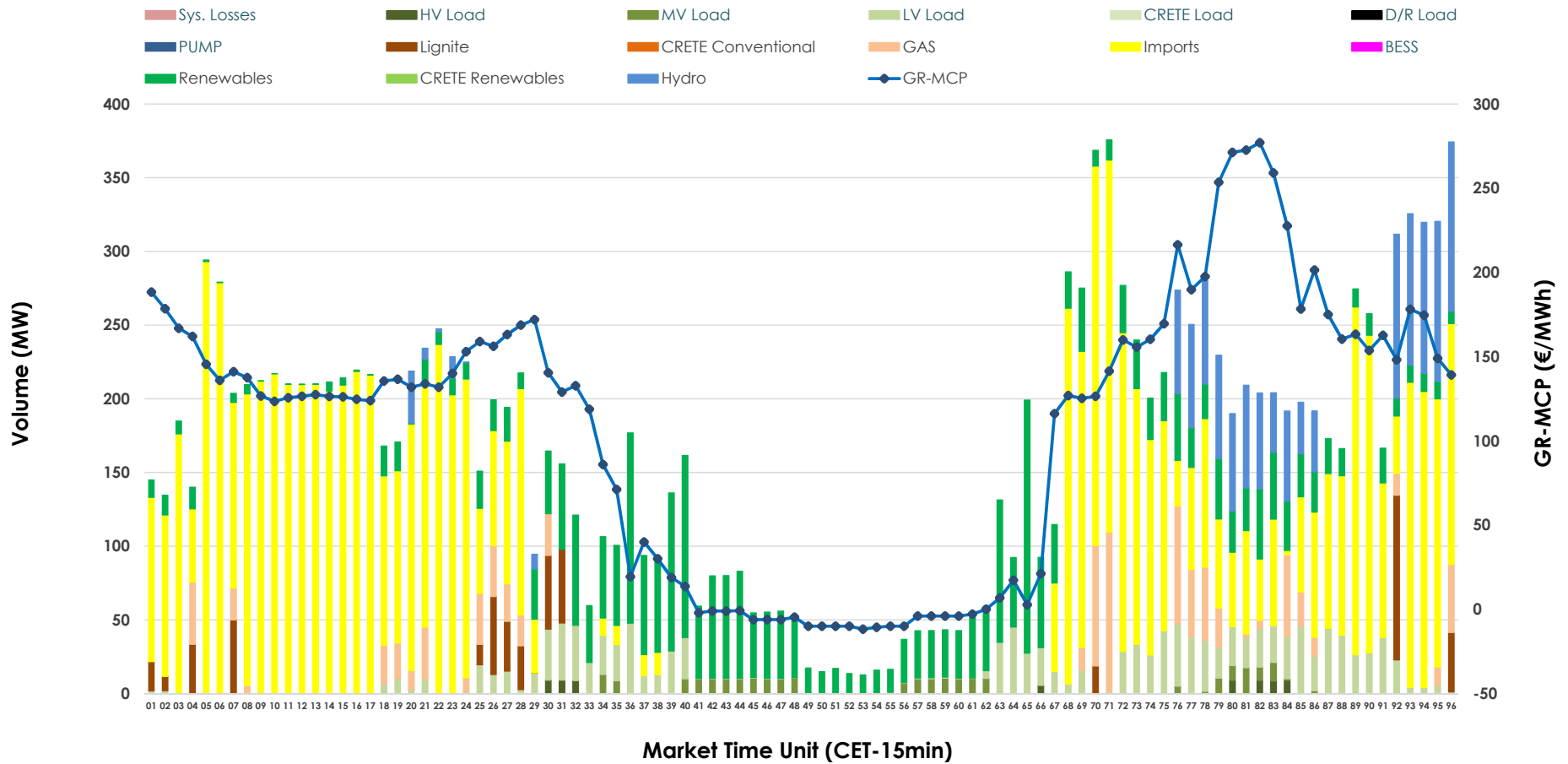


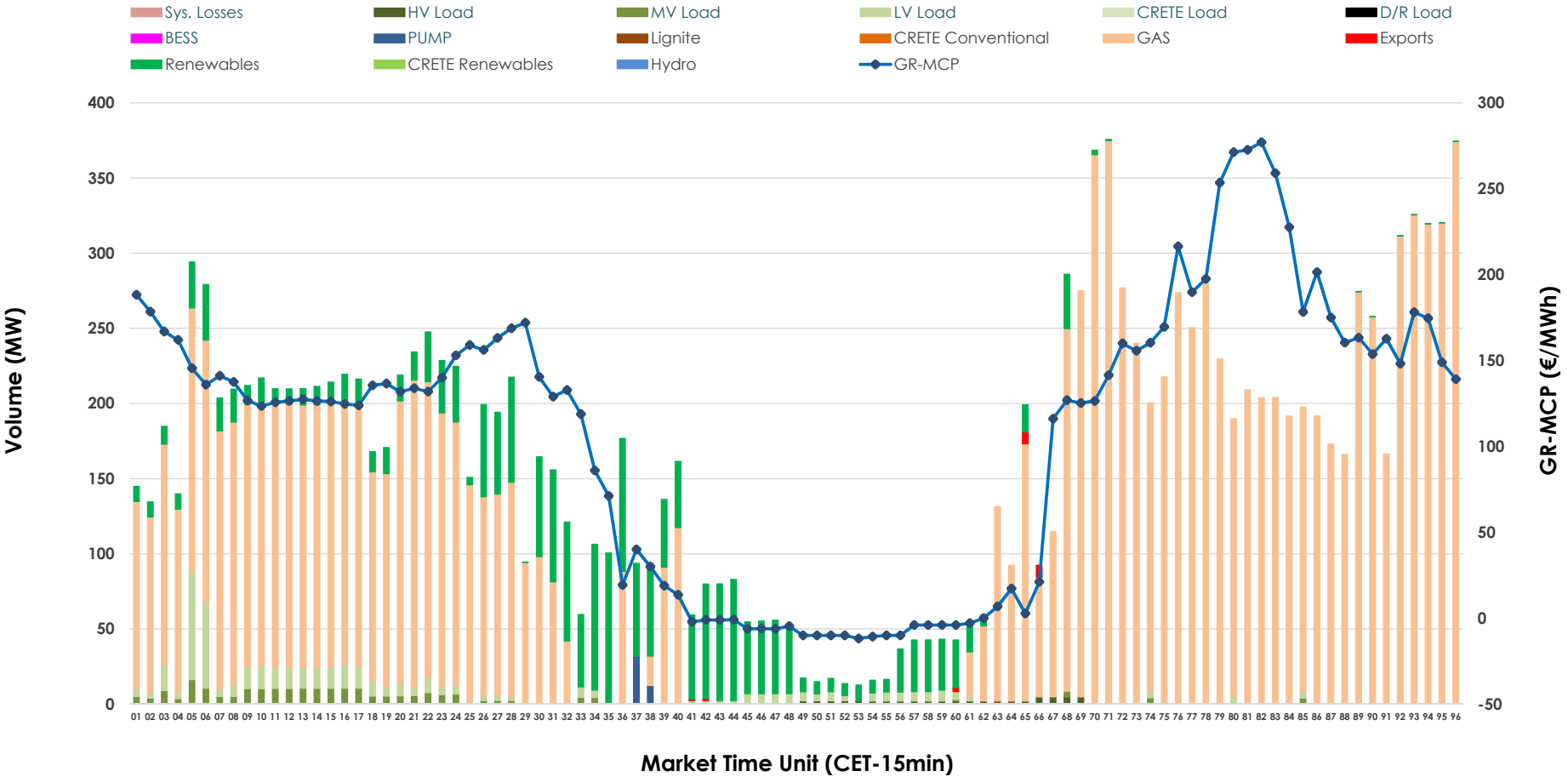


IDA '2' Market Outlook

05.05.2026 IDA '2' Market - Sell



05.05.2026 IDA '2' Market - Buy



GR Bidding Zone Weekly Figures

Delivery Day	29.04	30.04	01.05	02.05	03.05	04.05	05.05
	↑ 45%	↓ -14%	↓ -32%	↑ 13%	↑ 8%	↑ 47%	↑ 2%
Avg.MCP (€/MWh)	101.24	86.96	58.74	66.43	71.66	105.41	107.48
Max.MCP (€/MWh)	220.05	209.77	118.93	168.12	187.97	304.04	277.05
Min.MCP (€/MWh)	-5.16	-5.23	-12.00	-20.00	-20.00	-15.01	-11.79
	↑ 2%	↑ 29%	↓ -18%	↑ 46%	↓ -25%	↑ 8%	↑ 60%
Tot.Vol(GWh)	4.01	5.18	4.27	6.22	4.66	5.04	8.08

Trades by Order Type

Delivery Day	29.04	30.04	01.05	02.05	03.05	04.05	05.05	
Ord Price Type	Sell & Buy Trades in (GWh) per Price Type							(%)
PPT (S)	0.000	0.000	0.000	0.000	0.000	0.000	0.000	0.00%
HBD (S)	1.623	2.016	1.781	2.831	1.733	1.725	1.827	45.23%
BLK (S)	0.000	0.000	0.000	0.000	0.000	0.000	0.000	0.00%
CPL (S)	0.381	0.572	0.352	0.277	0.599	0.793	2.212	54.77%
PPT (B)	0.000	0.000	0.000	0.000	0.000	0.000	0.000	0.00%
HBD (B)	1.229	2.052	1.235	1.727	2.200	2.371	4.034	99.87%
BLK (B)	0.000	0.000	0.000	0.000	0.000	0.000	0.000	0.00%
CPL (B)	0.775	0.536	0.898	1.381	0.132	0.147	0.005	0.13%
Ord Price Type	Sell & Buy Orders Traded per Price Type							(%)
PPT (S)	0	0	0	0	0	0	0	0.00%
HBD (S)	420	428	525	429	305	322	409	100.00%
BLK (S)	0	0	0	0	0	0	0	0.00%
PPT (B)	0	0	0	0	0	0	0	0.00%
HBD (B)	512	448	344	395	466	562	374	100.00%
BLK (B)	0	0	0	0	0	0	0	0.00%

MCP Market Clearing Price (€/MWh)
PPT Priority Price-Taking
HBD Hybrid
BLK Block
CPL Market Coupling Flow

Trade's Volume Mix

	Sell - MWh	Buy - MWh	
Lignite (3.2%)	128	0	(0.0%)
Crete Conv. (0.0%)	0	0	(0.0%)
Gas (5.6%)	225	3,281	(81.2%)
Hydro (7.8%)	317	0	(0.0%)
Imports (54.8%)	2,212		
RES (18.8%)	759	547	(13.6%)
Crete RES (0.0%)	0	0	(0.0%)
BESS (0.0%)	0	0	(0.0%)
HV Load (0.4%)	17	14	(0.3%)
MV Load (1.6%)	64	56	(1.4%)
LV Load (7.9%)	317	124	(3.1%)
Crete Load (0.0%)	0	0	(0.0%)
Pumping (0.0%)	0	11	(0.3%)
Exports		5	(0.1%)
Sys.Losses (0.0%)	0	0	(0.0%)
D/R Load (0.0%)	0	0	(0.0%)

