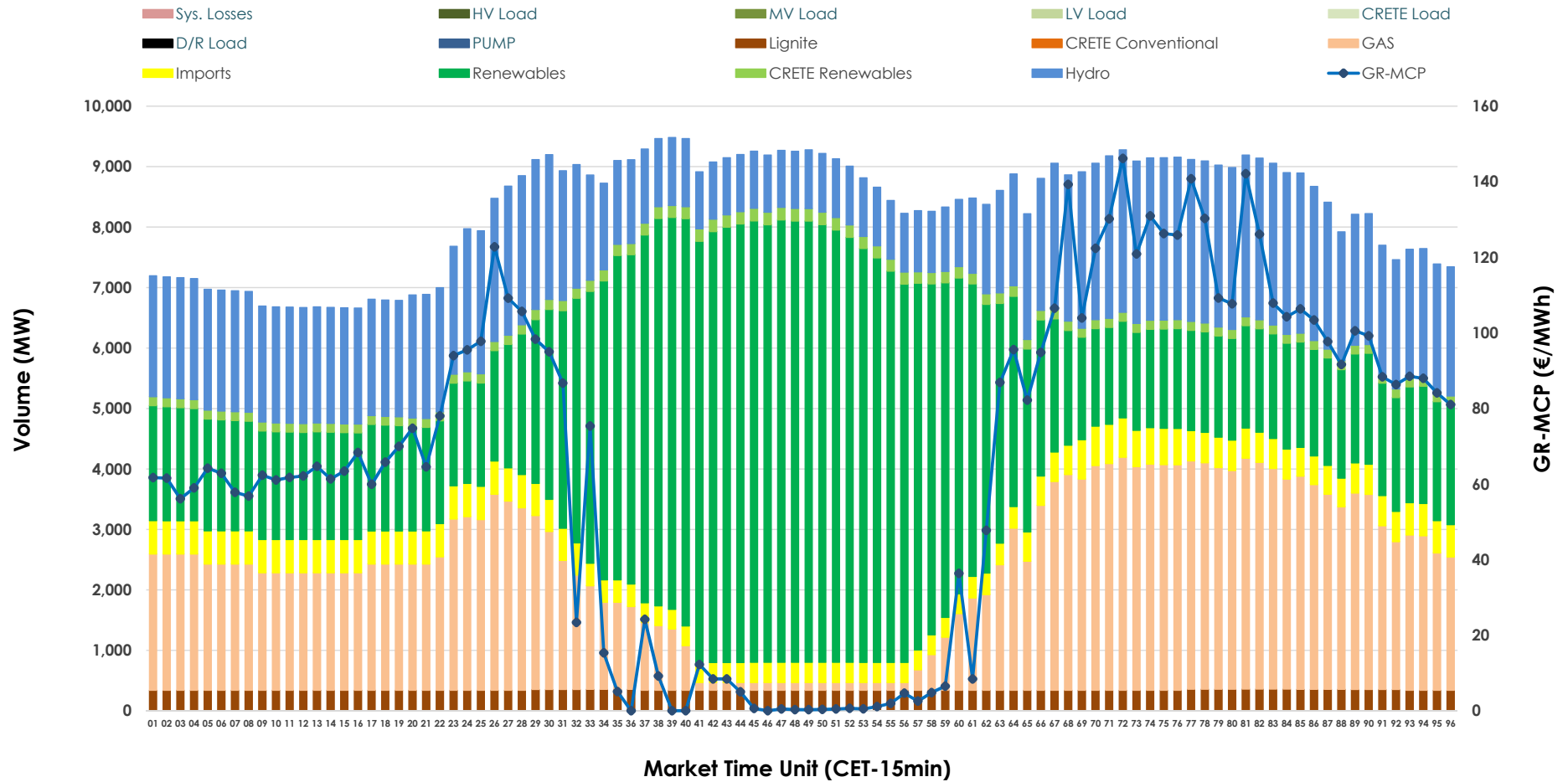


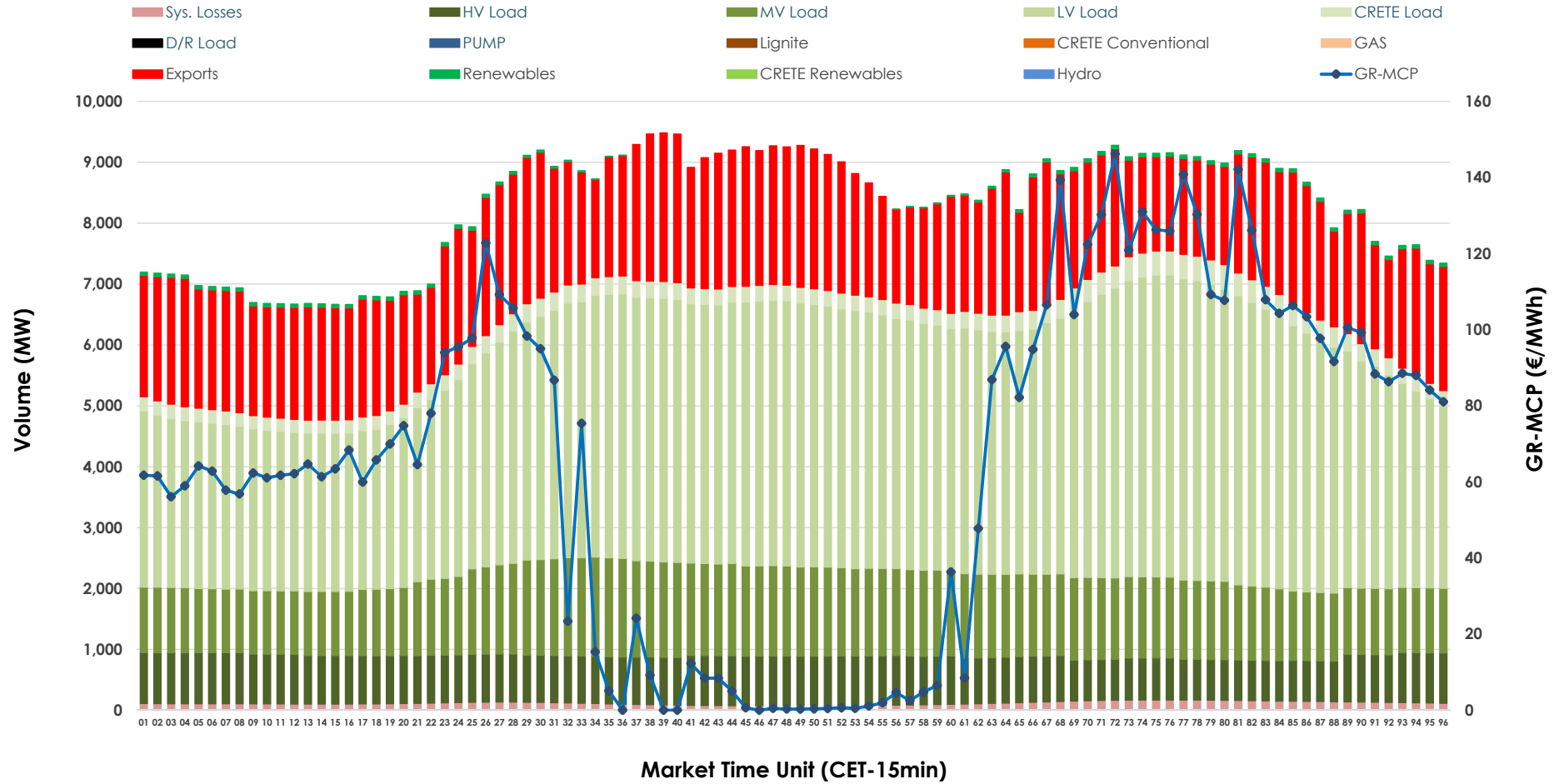


Day-Ahead Market Outlook

27.02.2026 Day-Ahead Market - Sell



27.02.2026 Day-Ahead Market - Buy



GR Bidding Zone Weekly Figures

Delivery Day	21.02	22.02	23.02	24.02	25.02	26.02	27.02
	👇 -14%	👇 -29%	👇 -3%	👆 48%	👇 -16%	👆 5%	👆 15%
Avg.MCP (€/MWh)	63.81	45.14	43.94	65.00	54.54	57.09	65.66
Max.MCP (€/MWh)	116.58	106.14	145.00	144.77	147.61	129.65	146.17
Min.MCP (€/MWh)	0.01	-0.01	-25.00	0.00	0.00	-0.01	0.01
	👇 -14%	👆 4%	👇 -2%	👆 10%	👆 0%	👆 4%	👇 -1%
Tot.Vol(GWh)	346.45	358.95	351.59	385.95	387.02	403.23	399.06

Trades by Order Type

Delivery Day		21.02	22.02	23.02	24.02	25.02	26.02	27.02	
Ord Price Type		Sell & Buy Trades in (GWh) per Price Type							(%)
PPT	(S)	103.858	111.881	112.438	113.831	106.228	115.405	107.369	53.81%
HBD	(S)	52.022	55.819	43.541	58.754	62.460	64.030	66.550	33.35%
BLK	(S)	16.689	11.773	19.815	20.389	23.405	22.178	25.283	12.67%
CPL	(S)	0.657	0.000	0.000	0.000	1.418	0.000	0.327	0.16%
PPT	(B)	12.898	12.126	12.390	12.416	13.257	13.008	12.878	6.45%
HBD	(B)	136.433	132.898	126.507	145.355	146.689	148.228	150.080	75.22%
BLK	(B)	0.000	0.000	0.000	0.000	0.000	0.000	0.000	0.00%
CPL	(B)	23.895	34.448	36.898	35.202	33.565	40.377	36.571	18.33%
		Sell & Buy Orders Traded per Price Type							(%)
PPT	(S)	2504	2419	2534	2559	2404	2414	2382	45.35%
HBD	(S)	2686	2282	1926	2570	2410	2446	2859	54.43%
BLK	(S)	7	6	8	9	9	8	12	0.23%
PPT	(B)	2300	2308	2215	2216	2224	2237	2233	35.80%
HBD	(B)	3968	4167	4319	4109	4137	4113	4005	64.20%
BLK	(B)	0	0	0	0	0	0	0	0.00%

- MCP** Market Clearing Price (€/MWh)
- PPT** Priority Price-Taking
- HBD** Hybrid
- BLK** Block
- CPL** Market Coupling Flow

Trade's Volume Mix

		Sell - MWh	Buy - MWh	
Lignite	(4.1%)	8,250	0	(0.0%)
Crete Conv.	(0.0%)	0	0	(0.0%)
Gas	(25.3%)	50,428	0	(0.0%)
Hydro	(22.7%)	45,372	0	(0.0%)
Imports	(5.7%)	11,344		
RES	(40.2%)	80,190	894	(0.4%)
Crete RES	(2.0%)	3,944	0	(0.0%)
HV Load	(0.0%)	0	18,523	(9.3%)
MV Load	(0.0%)	0	31,293	(15.7%)
LV Load	(0.0%)	0	91,969	(46.1%)
Crete Load	(0.0%)	0	6,815	(3.4%)
Pumping	(0.0%)	0	0	(0.0%)
Exports			47,241	(23.7%)
Sys.Losses	(0.0%)	0	2,796	(1.4%)
D/R Load	(0.0%)	0	0	(0.0%)

