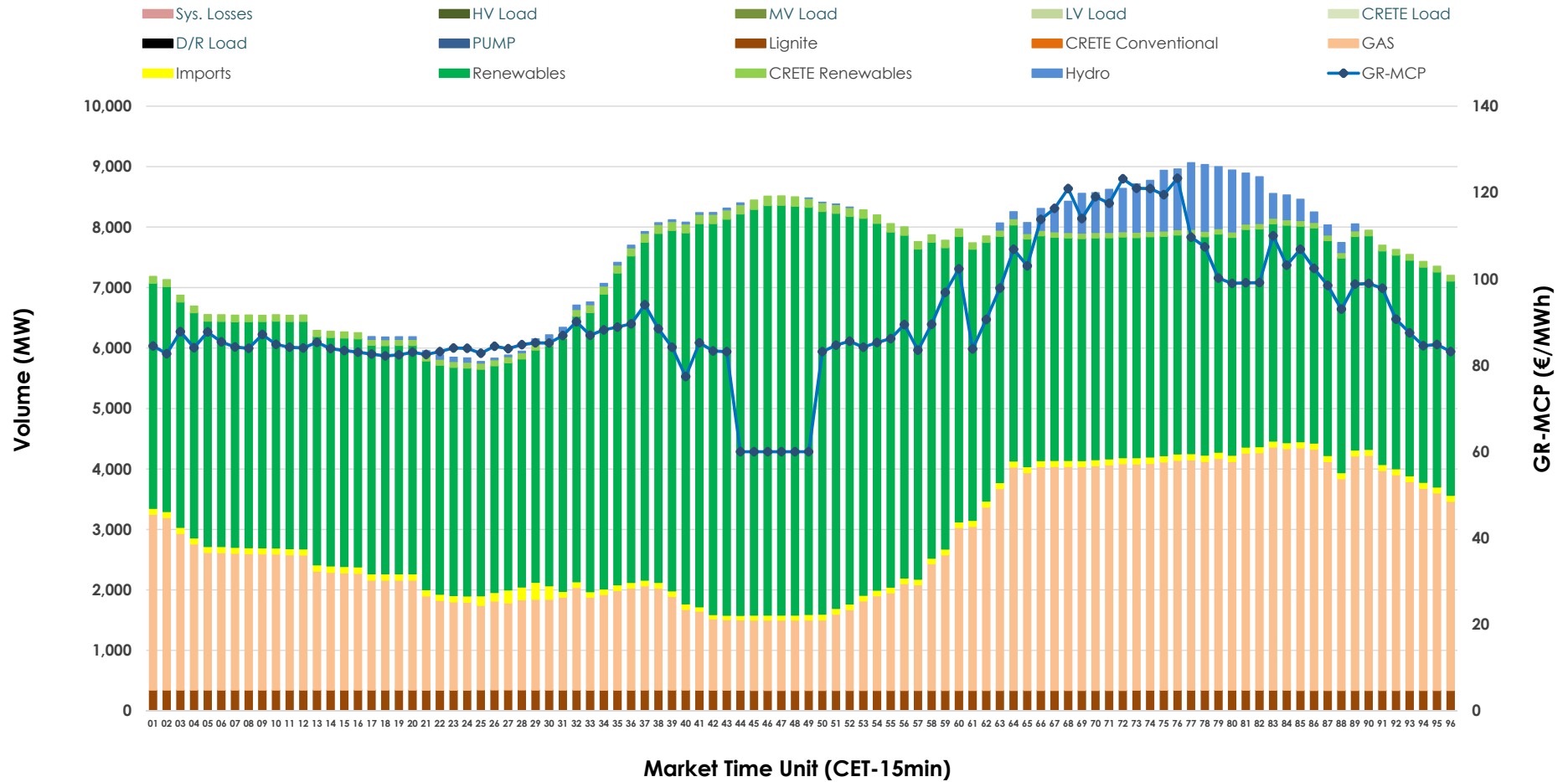


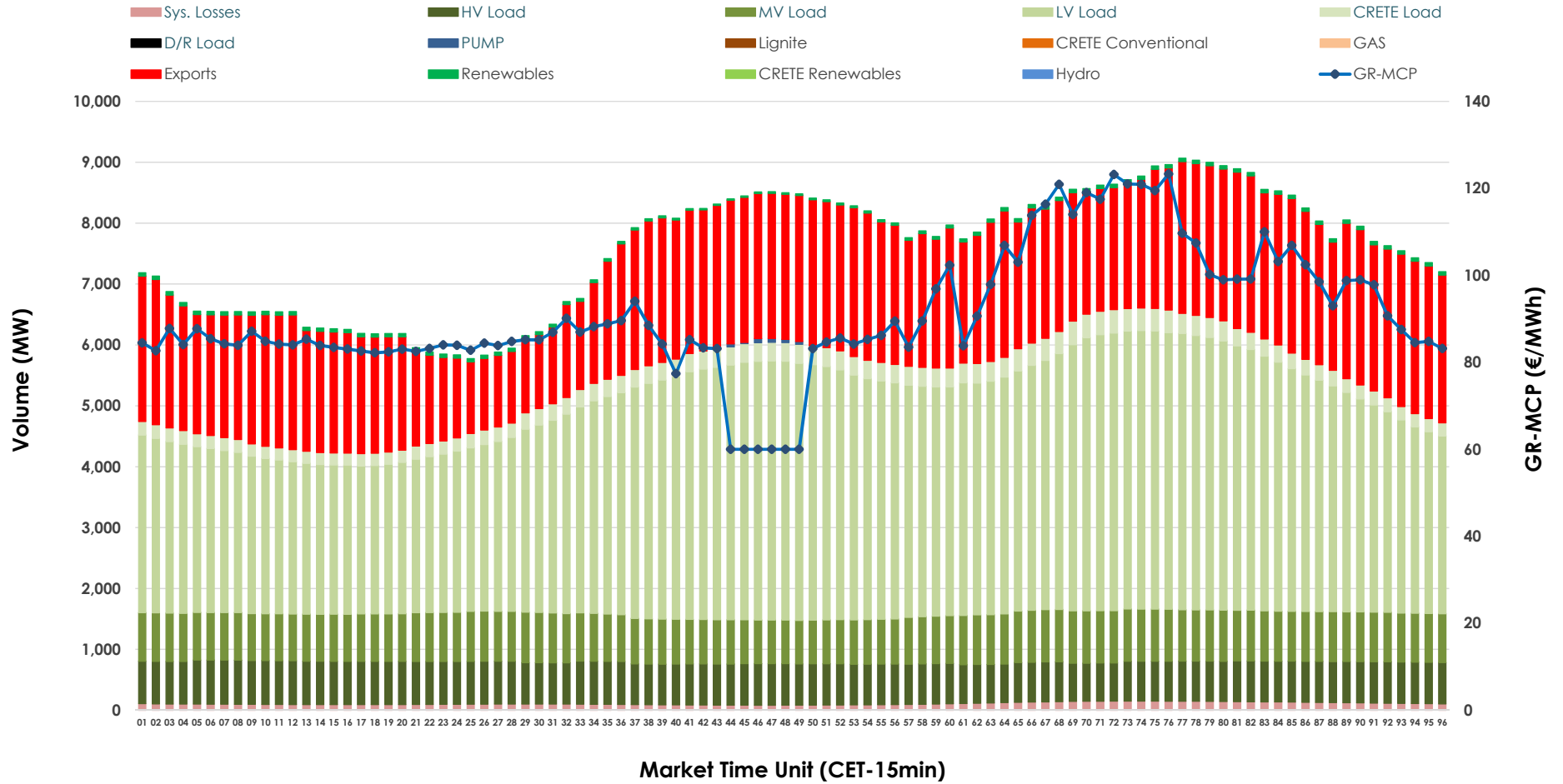


# Day-Ahead Market Outlook

04.01.2026 Day-Ahead Market - Sell



### 04.01.2026 Day-Ahead Market - Buy



### GR Bidding Zone Weekly Figures

Delivery Day	29.12	30.12	31.12	01.01	02.01	03.01	04.01
	↗ 22%	↘ -7%	↗ 5%	↘ -21%	↗ 19%	↘ -6%	↗ 2%
<b>Avg.MCP (€/MWh)</b>	102.75	95.23	100.45	79.44	94.59	89.27	90.93
<b>Max.MCP (€/MWh)</b>	160.91	147.44	182.30	140.47	125.85	114.95	123.30
<b>Min.MCP (€/MWh)</b>	58.40	0.20	74.41	10.23	26.67	74.94	60.00
	➡ 0%	➡ 1%	↗ 2%	↘ -3%	↗ 4%	↗ 6%	↘ -5%
<b>Tot.Vol(GWh)</b>	349.51	352.11	359.47	348.40	362.87	383.02	363.66

### Trades by Order Type

Delivery Day		29.12	30.12	31.12	01.01	02.01	03.01	04.01	
<b>Ord Price Type</b>		<b>Sell &amp; Buy Trades in (GWh) per Price Type</b>							<b>(%)</b>
<b>PPT</b>	(S)	47.322	54.153	53.153	50.133	53.556	67.086	68.347	37.59%
<b>HBD</b>	(S)	66.797	69.659	74.228	66.925	69.516	77.856	73.611	40.48%
<b>BLK</b>	(S)	53.786	47.936	44.790	39.393	44.873	46.419	39.715	21.84%
<b>CPL</b>	(S)	6.850	4.309	7.563	17.750	13.493	0.150	0.156	0.09%
<b>PPT</b>	(B)	15.215	15.576	15.549	15.514	15.498	16.042	16.629	9.15%
<b>HBD</b>	(B)	143.751	147.958	150.532	146.526	152.286	143.346	130.882	71.98%
<b>BLK</b>	(B)	0.000	0.000	0.000	0.000	0.000	0.000	0.000	0.00%
<b>CPL</b>	(B)	15.790	12.522	13.654	12.161	13.653	32.122	34.319	18.87%
		<b>Sell &amp; Buy Orders Traded per Price Type</b>							<b>(%)</b>
<b>PPT</b>	(S)	1447	1477	1426	1345	1382	1356	1381	35.18%
<b>HBD</b>	(S)	2909	2857	2813	2590	2834	2742	2525	64.33%
<b>BLK</b>	(S)	22	16	17	13	18	20	19	0.48%
<b>PPT</b>	(B)	2354	2347	2361	2457	2370	2344	2484	37.69%
<b>HBD</b>	(B)	4138	4186	4103	4489	4132	4155	4106	62.31%
<b>BLK</b>	(B)	0	0	0	0	0	0	0	0.00%

**MCP** Market Clearing Price (€/MWh)  
**PPT** Priority Price-Taking  
**HBD** Hybrid  
**BLK** Block  
**CPL** Market Coupling Flow

### Trade's Volume Mix

		Sell - MWh	Buy - MWh	
<b>Lignite</b>	(4.5%)	8,160	0	(0.0%)
<b>Crete Conv.</b>	(0.0%)	0	0	(0.0%)
<b>Gas</b>	(32.5%)	59,056	0	(0.0%)
<b>Hydro</b>	(2.3%)	4,227	0	(0.0%)
<b>Imports</b>	(1.4%)	2,505		
<b>RES</b>	(57.9%)	105,206	1,156	(0.6%)
<b>Crete RES</b>	(1.5%)	2,675	0	(0.0%)
<b>HV Load</b>	(0.0%)	0	16,321	(9.0%)
<b>MV Load</b>	(0.0%)	0	19,041	(10.5%)
<b>LV Load</b>	(0.0%)	0	85,123	(46.8%)
<b>Crete Load</b>	(0.0%)	0	6,634	(3.6%)
<b>Pumping</b>	(0.0%)	0	74	(0.0%)
<b>Exports</b>			50,867	(28.0%)
<b>Sys.Losses</b>	(0.0%)	0	2,613	(1.4%)
<b>D/R Load</b>	(0.0%)	0	0	(0.0%)

