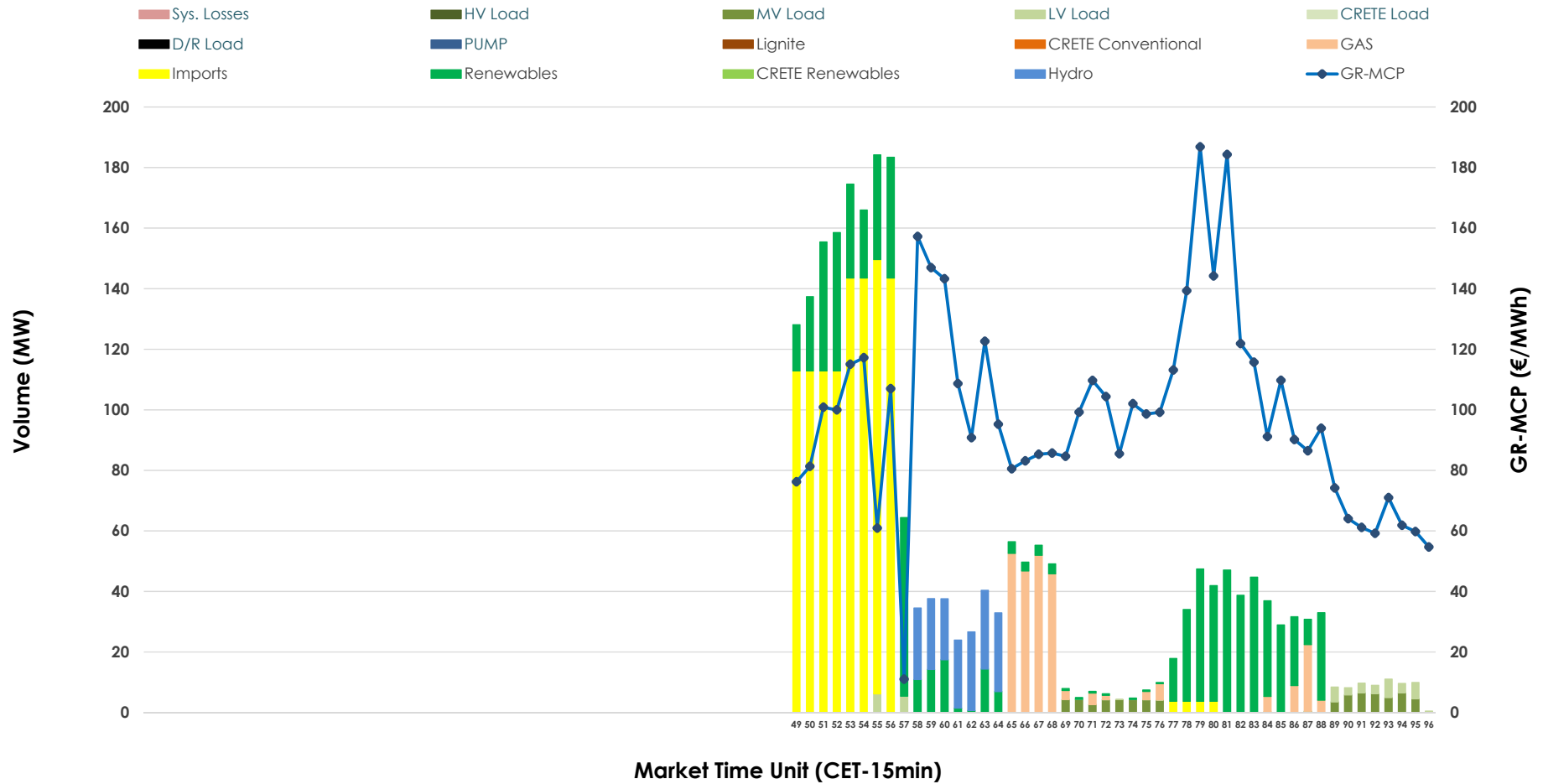


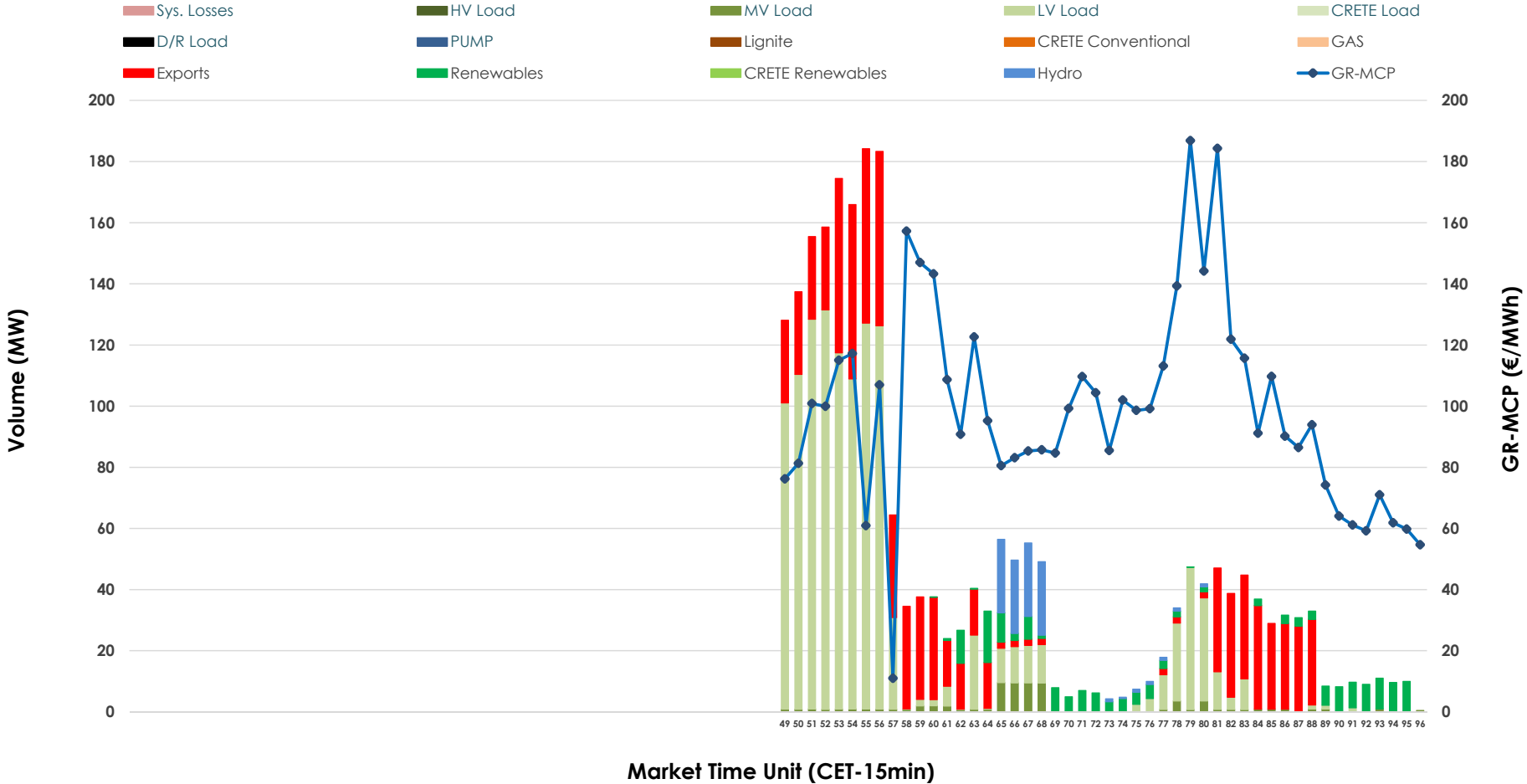


# IDA '3' Market Outlook

08.01.2026 IDA '3' Market - Sell



08.01.2026 IDA '3' Market - Buy



### GR Bidding Zone Weekly Figures

Delivery Day	02.01	03.01	04.01	05.01	06.01	07.01	08.01
	↗ 19%	↘ -4%	↘ -5%	↗ 38%	↘ -25%	↘ -7%	↗ 14%
<b>Avg.MCP (€/MWh)</b>	99.14	95.35	90.50	125.21	93.64	86.83	98.64
<b>Max.MCP (€/MWh)</b>	124.90	125.00	125.96	223.41	159.04	129.54	186.83
<b>Min.MCP (€/MWh)</b>	23.25	66.82	43.20	87.77	54.86	57.83	11.00
	↗ 36%	↘ -12%	↗ 29%	↘ -29%	↗ 78%	↗ 15%	↘ -63%
<b>Tot.Vol(GWh)</b>	1.92	1.69	2.18	1.55	2.77	3.19	1.17

### Trades by Order Type

Delivery Day		02.01	03.01	04.01	05.01	06.01	07.01	08.01	
<b>Ord Price Type</b>		<b>Sell &amp; Buy Trades in (GWh) per Price Type</b>							<b>(%)</b>
<b>PPT</b>	(S)	0.000	0.000	0.000	0.000	0.000	0.000	0.000	0.00%
<b>HBD</b>	(S)	0.420	0.819	0.655	0.698	1.383	1.596	0.327	55.69%
<b>BLK</b>	(S)	0.000	0.000	0.000	0.000	0.000	0.000	0.000	0.00%
<b>CPL</b>	(S)	0.539	0.026	0.436	0.078	0.000	0.000	0.260	44.31%
<b>PPT</b>	(B)	0.000	0.000	0.000	0.000	0.000	0.000	0.000	0.00%
<b>HBD</b>	(B)	0.242	0.495	0.921	0.215	0.163	0.781	0.389	66.27%
<b>BLK</b>	(B)	0.000	0.000	0.000	0.000	0.000	0.000	0.000	0.00%
<b>CPL</b>	(B)	0.716	0.350	0.170	0.562	1.220	0.815	0.198	33.73%
		<b>Sell &amp; Buy Orders Traded per Price Type</b>							<b>(%)</b>
<b>PPT</b>	(S)	0	0	0	0	0	0	0	0.00%
<b>HBD</b>	(S)	203	241	129	193	199	147	150	100.00%
<b>BLK</b>	(S)	0	0	0	0	0	0	0	0.00%
<b>PPT</b>	(B)	0	0	0	0	0	0	0	0.00%
<b>HBD</b>	(B)	203	188	230	91	116	240	125	100.00%
<b>BLK</b>	(B)	0	0	0	0	0	0	0	0.00%

**MCP** Market Clearing Price (€/MWh)  
**PPT** Priority Price-Taking  
**HBD** Hybrid  
**BLK** Block  
**CPL** Market Coupling Flow

### Trade's Volume Mix

	Sell - MWh	Buy - MWh	
<b>Lignite</b>	0	0	(0.0%)
<b>Crete Conv.</b>	0	0	(0.0%)
<b>Gas</b>	63	0	(0.0%)
<b>Hydro</b>	42	26	(4.4%)
<b>Imports</b>	260		
<b>RES</b>	194	42	(7.1%)
<b>Crete RES</b>	0	0	(0.0%)
<b>HV Load</b>	0	0	(0.0%)
<b>MV Load</b>	18	18	(3.1%)
<b>LV Load</b>	10	303	(51.7%)
<b>Crete Load</b>	0	0	(0.0%)
<b>Pumping</b>	0	0	(0.0%)
<b>Exports</b>		198	(33.7%)
<b>Sys.Losses</b>	0	0	(0.0%)
<b>D/R Load</b>	0	0	(0.0%)

