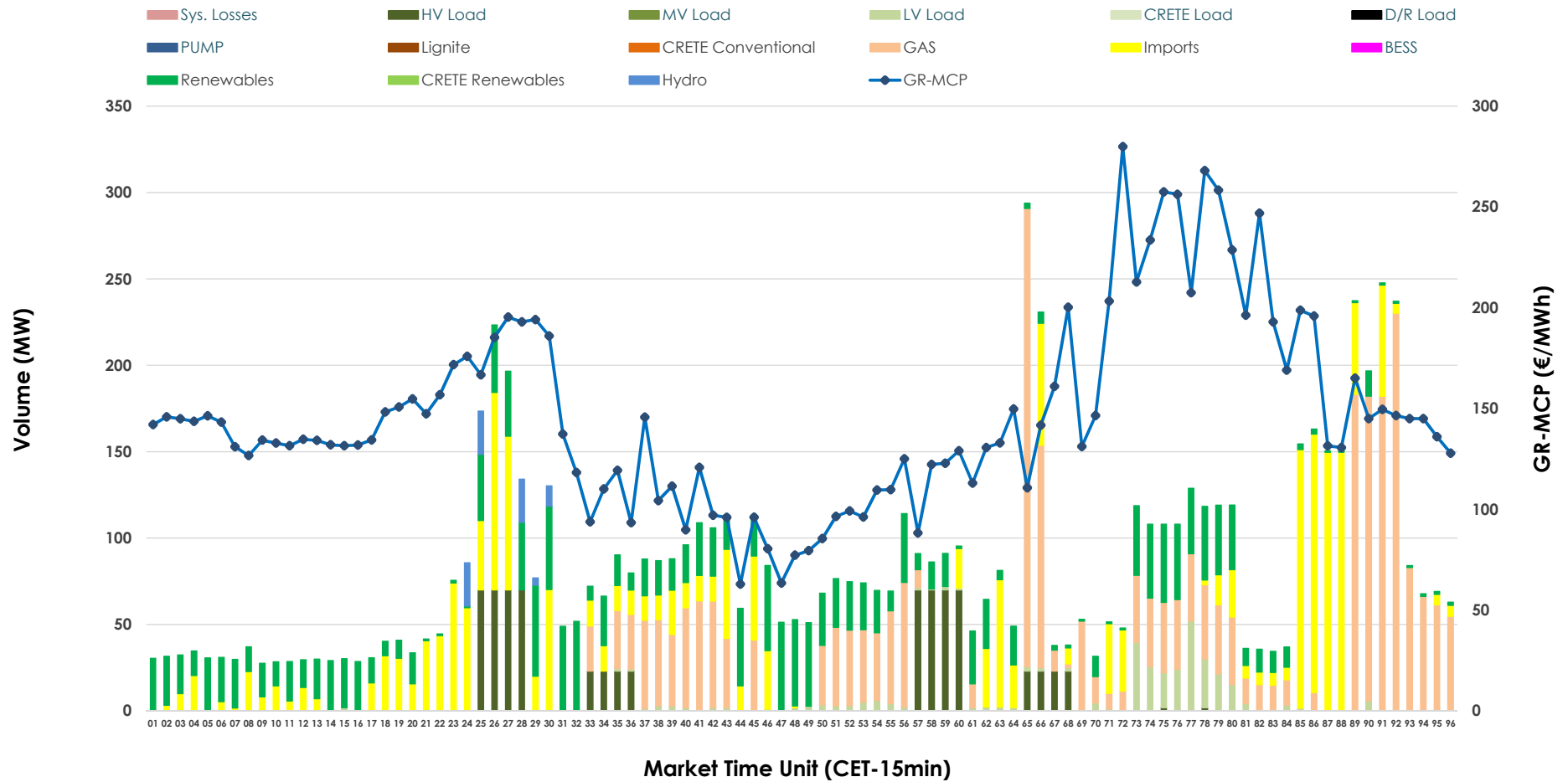


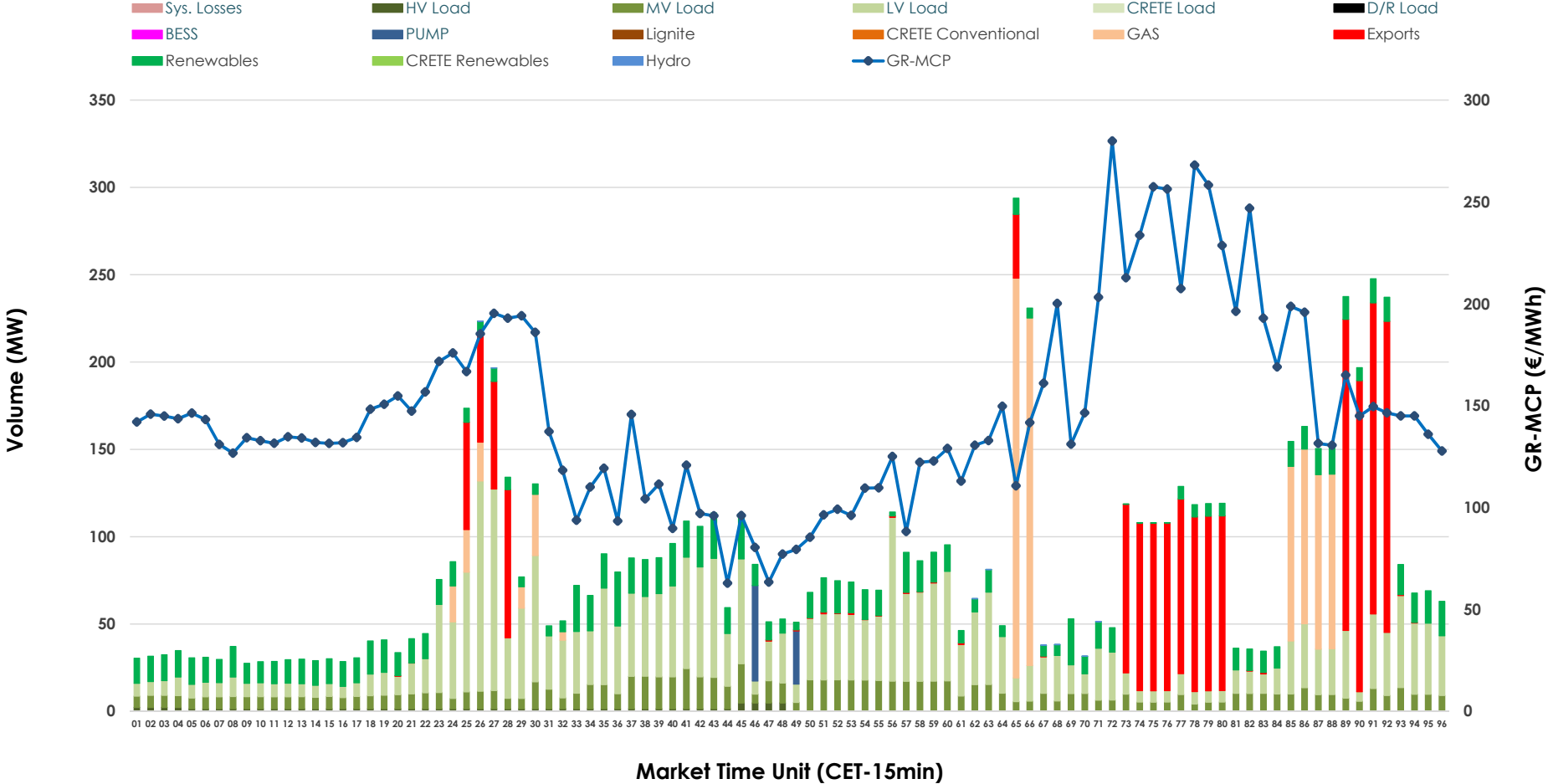


IDA '1' Market Outlook

23.03.2026 IDA '1' Market - Sell



23.03.2026 IDA '1' Market - Buy



GR Bidding Zone Weekly Figures

Delivery Day	17.03	18.03	19.03	20.03	21.03	22.03	23.03
	↗ 16%	↘ -23%	↗ 12%	↗ 7%	↘ -13%	↘ -10%	↗ 76%
Avg.MCP (€/MWh)	114.99	89.03	99.89	107.18	93.13	83.38	146.60
Max.MCP (€/MWh)	209.10	160.11	216.29	246.73	167.26	192.93	279.92
Min.MCP (€/MWh)	48.13	1.56	4.00	13.00	-8.88	-11.08	62.90
	↗ 58%			↗ 192%	↘ -49%		
Tot.Vol(GWh)	4.22	N/M	2.63	7.69	3.90	N/M	4.08

Trades by Order Type

Delivery Day		17.03	18.03	19.03	20.03	21.03	22.03	23.03	
Ord Price Type		Sell & Buy Trades in (GWh) per Price Type							(%)
PPT	(S)	0.000	0.000	0.000	0.000	0.000	0.000	0.000	0.00%
HBD	(S)	1.061	0.000	1.168	3.581	1.854	0.000	1.492	73.19%
BLK	(S)	0.000	0.000	0.000	0.000	0.000	0.000	0.000	0.00%
CPL	(S)	1.049	0.000	0.148	0.263	0.097	0.000	0.546	26.81%
PPT	(B)	0.000	0.000	0.000	0.000	0.000	0.000	0.000	0.00%
HBD	(B)	1.968	0.000	1.146	3.175	1.790	0.000	1.585	77.76%
BLK	(B)	0.000	0.000	0.000	0.000	0.000	0.000	0.000	0.00%
CPL	(B)	0.142	0.000	0.170	0.669	0.161	0.000	0.453	22.24%
		Sell & Buy Orders Traded per Price Type							(%)
PPT	(S)	0	0	0	0	0	0	0	0.00%
HBD	(S)	209	291	216	269	102	208	219	100.00%
BLK	(S)	0	0	0	0	0	0	0	0.00%
PPT	(B)	0	0	0	0	0	0	0	0.00%
HBD	(B)	835	802	790	988	824	755	773	100.00%
BLK	(B)	0	0	0	0	0	0	0	0.00%

- MCP** Market Clearing Price (€/MWh)
- PPT** Priority Price-Taking
- HBD** Hybrid
- BLK** Block
- CPL** Market Coupling Flow

Trade's Volume Mix

	Sell - MWh	Buy - MWh	
Lignite (0.0%)	0	0	(0.0%)
Crete Conv. (0.0%)	0	0	(0.0%)
Gas (34.0%)	694	237	(11.6%)
Hydro (1.1%)	23	0	(0.0%)
Imports (26.8%)	546		
RES (25.0%)	510	321	(15.8%)
Crete RES (0.0%)	0	0	(0.0%)
BESS (0.0%)	0	0	(0.0%)
HV Load (9.2%)	187	22	(1.1%)
MV Load (0.0%)	0	253	(12.4%)
LV Load (3.9%)	79	730	(35.8%)
Crete Load (0.0%)	0	0	(0.0%)
Pumping (0.0%)	0	21	(1.0%)
Exports		453	(22.2%)
Sys.Losses (0.0%)	0	0	(0.0%)
D/R Load (0.0%)	0	0	(0.0%)

