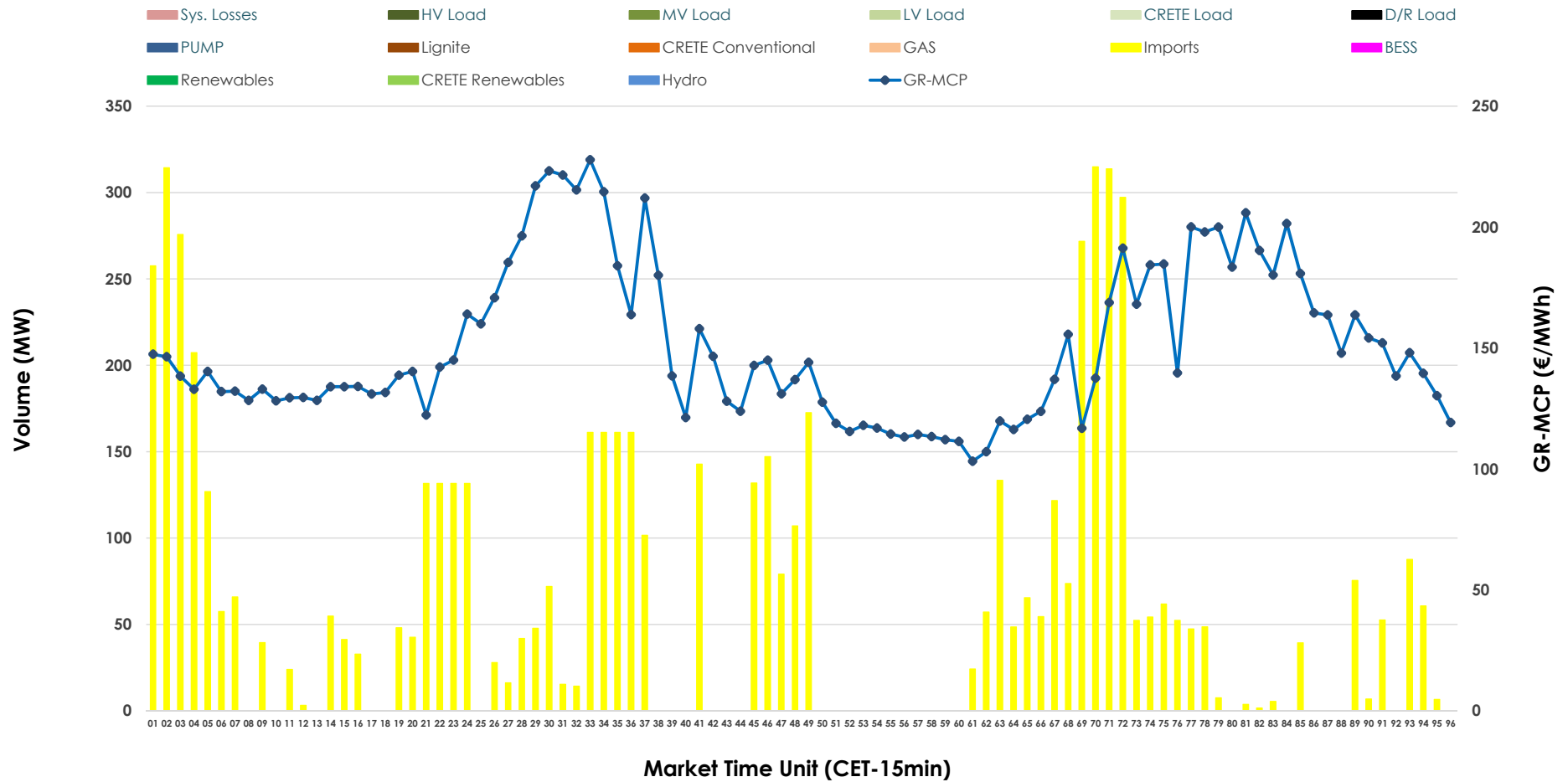


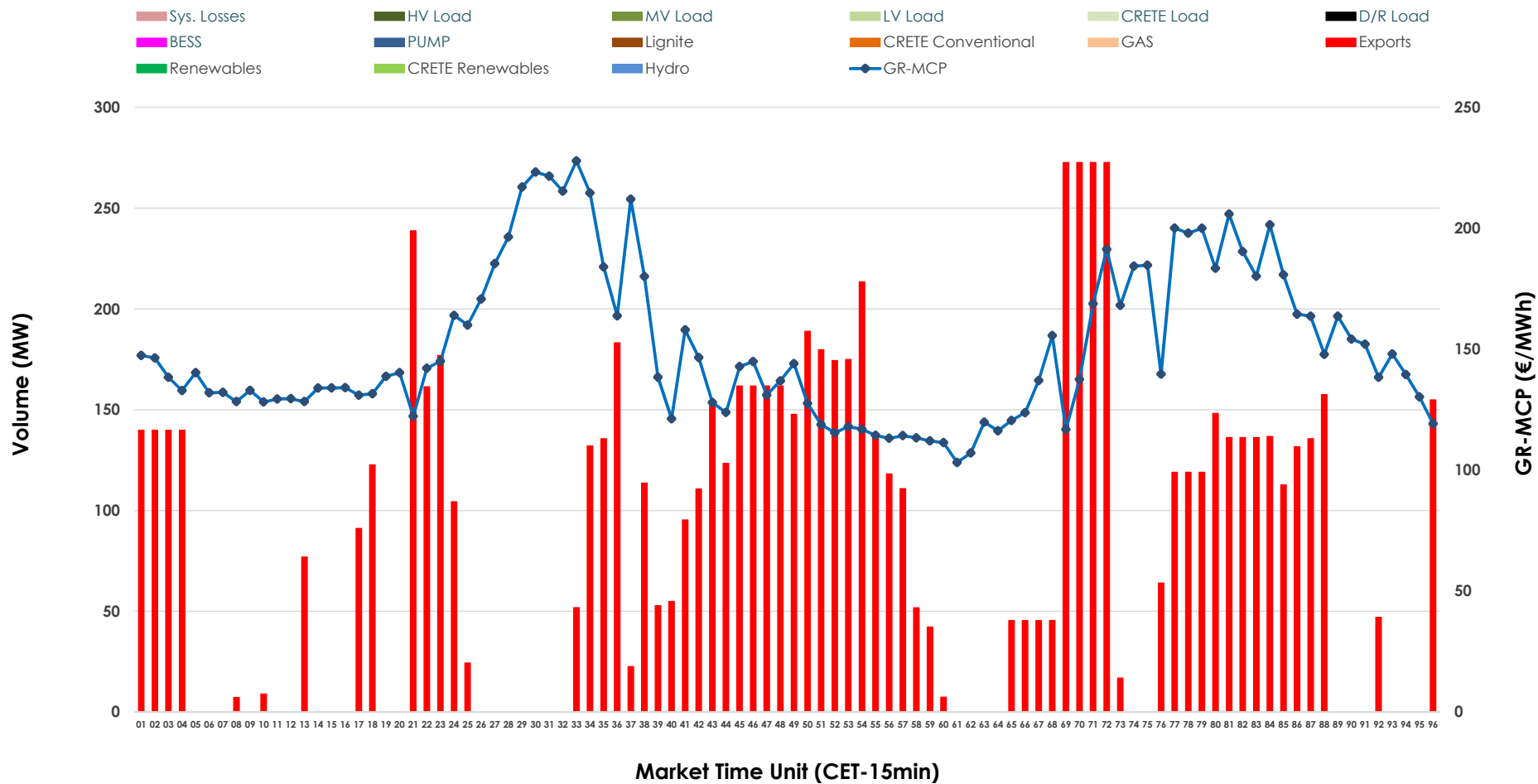


IDA '2' Market Outlook

01.04.2026 IDA '2' Market - Sell



01.04.2026 IDA '2' Market - Buy



GR Bidding Zone Weekly Figures

Delivery Day	26.03	27.03	28.03	29.03	30.03	31.03	01.04
	👇 -9%	👆 22%	👇 -11%	👇 -12%	👆 57%	👆 18%	👆 11%
Avg.MCP (€/MWh)	76.43	93.44	82.83	73.07	115.06	135.71	150.68
Max.MCP (€/MWh)	162.57	150.70	159.68	139.62	222.69	223.43	227.84
Min.MCP (€/MWh)	-10.32	4.22	6.23	-16.08	0.00	84.06	103.20
	👆 52%	👇 -25%	👆 9%	👇 -17%	👆 11%	👆 37%	👆 54%
Tot.Vol(GWh)	5.11	3.81	4.14	3.45	3.84	5.26	8.13

Trades by Order Type

Delivery Day		26.03	27.03	28.03	29.03	30.03	31.03	01.04	
Ord Price Type		Sell & Buy Trades in (GWh) per Price Type							(%)
PPT	(S)	0.000	0.000	0.000	0.000	0.000	0.000	0.000	0.00%
HBD	(S)	2.013	1.571	0.713	1.412	1.209	2.216	2.487	61.15%
BLK	(S)	0.000	0.000	0.000	0.000	0.000	0.000	0.000	0.00%
CPL	(S)	0.544	0.336	1.357	0.312	0.709	0.416	1.580	38.85%
PPT	(B)	0.000	0.000	0.000	0.000	0.000	0.000	0.000	0.00%
HBD	(B)	1.977	1.730	1.309	0.762	1.465	1.028	2.032	49.97%
BLK	(B)	0.000	0.000	0.000	0.000	0.000	0.000	0.000	0.00%
CPL	(B)	0.579	0.177	0.762	0.962	0.453	1.605	2.034	50.03%
		Sell & Buy Orders Traded per Price Type							(%)
PPT	(S)	0	0	0	0	0	0	0	0.00%
HBD	(S)	405	345	381	375	407	443	274	100.00%
BLK	(S)	0	0	0	0	0	0	0	0.00%
PPT	(B)	0	0	0	0	0	0	0	0.00%
HBD	(B)	374	700	490	233	511	587	571	100.00%
BLK	(B)	0	0	0	0	0	0	0	0.00%

- MCP** Market Clearing Price (€/MWh)
- PPT** Priority Price-Taking
- HBD** Hybrid
- BLK** Block
- CPL** Market Coupling Flow

Trade's Volume Mix

		Sell - MWh	Buy - MWh	
Lignite	(0.0%)	0	0	(0.0%)
Crete Conv.	(0.0%)	0	0	(0.0%)
Gas	(0.0%)	0	0	(0.0%)
Hydro	(0.0%)	0	0	(0.0%)
Imports	(100.0%)	1,580		
RES	(0.0%)	0	0	(0.0%)
Crete RES	(0.0%)	0	0	(0.0%)
BESS	(0.0%)	0	0	(0.0%)
HV Load	(0.0%)	0	0	(0.0%)
MV Load	(0.0%)	0	0	(0.0%)
LV Load	(0.0%)	0	0	(0.0%)
Crete Load	(0.0%)	0	0	(0.0%)
Pumping	(0.0%)	0	0	(0.0%)
Exports			2,034	(100.0%)
Sys.Losses	(0.0%)	0	0	(0.0%)
D/R Load	(0.0%)	0	0	(0.0%)

