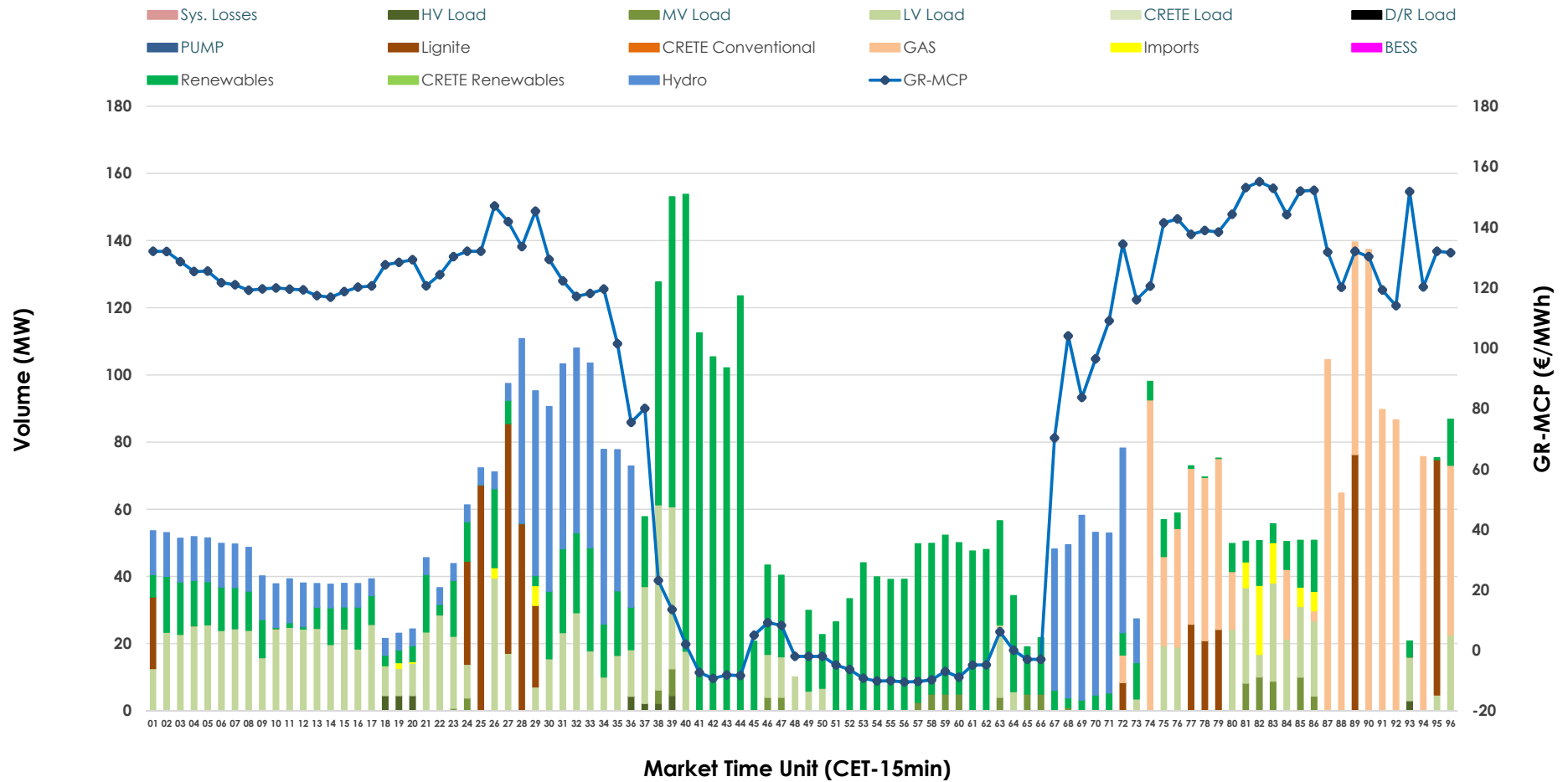


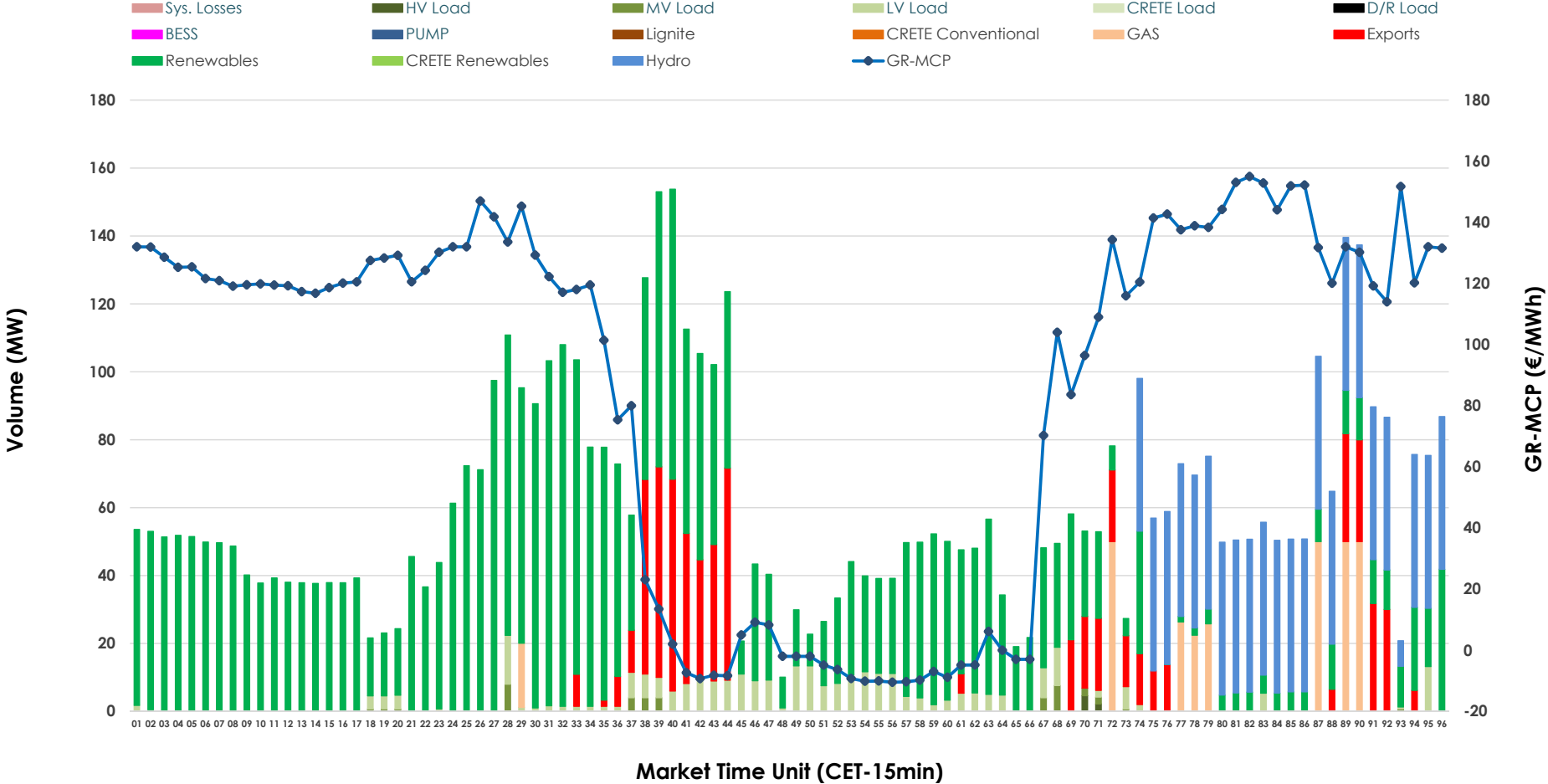


IDA '2' Market Outlook

03.06.2026 IDA '2' Market - Sell



03.06.2026 IDA '2' Market - Buy



GR Bidding Zone Weekly Figures

Delivery Day	28.05	29.05	30.05	31.05	01.06	02.06	03.06
	👇 -1%	👇 -13%	👆 13%	👇 -5%	👆 20%	👇 -7%	👇 -10%
Avg.MCP (€/MWh)	92.19	80.51	90.81	86.46	103.88	96.79	86.72
Max.MCP (€/MWh)	199.16	160.91	201.29	159.14	212.74	173.58	155.00
Min.MCP (€/MWh)	-1.86	-14.99	-4.54	-0.07	-6.67	0.75	-10.47
	👆 35%	👇 -8%	👇 -30%	👇 -11%	👆 35%	👆 37%	👇 -49%
Tot.Vol(GWh)	5.44	5.03	3.54	3.14	4.24	5.80	2.94

Trades by Order Type

Delivery Day		28.05	29.05	30.05	31.05	01.06	02.06	03.06	
Ord Price Type		Sell & Buy Trades in (GWh) per Price Type							(%)
PPT	(S)	0.000	0.000	0.000	0.000	0.000	0.000	0.000	0.00%
HBD	(S)	1.560	2.192	1.069	0.887	1.649	1.793	1.455	98.93%
BLK	(S)	0.000	0.000	0.000	0.000	0.000	0.000	0.000	0.00%
CPL	(S)	1.160	0.321	0.700	0.683	0.472	1.107	0.016	1.07%
PPT	(B)	0.000	0.000	0.000	0.000	0.000	0.000	0.000	0.00%
HBD	(B)	2.256	1.172	1.405	1.182	1.661	2.573	1.302	88.47%
BLK	(B)	0.000	0.000	0.000	0.000	0.000	0.000	0.000	0.00%
CPL	(B)	0.464	1.341	0.364	0.388	0.459	0.327	0.170	11.53%
		Sell & Buy Orders Traded per Price Type							(%)
PPT	(S)	0	0	0	0	0	0	0	0.00%
HBD	(S)	300	377	161	149	321	335	226	100.00%
BLK	(S)	0	0	0	0	0	0	0	0.00%
PPT	(B)	0	0	0	0	0	0	0	0.00%
HBD	(B)	421	391	435	357	592	736	418	100.00%
BLK	(B)	0	0	0	0	0	0	0	0.00%

- MCP** Market Clearing Price (€/MWh)
- PPT** Priority Price-Taking
- HBD** Hybrid
- BLK** Block
- CPL** Market Coupling Flow

Trade's Volume Mix

	Sell - MWh	Buy - MWh	
Lignite (8.4%)	123	0	(0.0%)
Crete Conv. (0.0%)	0	0	(0.0%)
Gas (17.4%)	256	73	(5.0%)
Hydro (17.2%)	253	249	(17.0%)
Imports (1.1%)	16		
RES (34.3%)	504	891	(60.6%)
Crete RES (0.0%)	0	0	(0.0%)
BESS (0.0%)	0	0	(0.0%)
HV Load (0.5%)	7	2	(0.1%)
MV Load (1.7%)	25	10	(0.7%)
LV Load (19.5%)	287	76	(5.2%)
Crete Load (0.0%)	0	0	(0.0%)
Pumping (0.0%)	0	0	(0.0%)
Exports		170	(11.5%)
Sys.Losses (0.0%)	0	0	(0.0%)
D/R Load (0.0%)	0	0	(0.0%)

