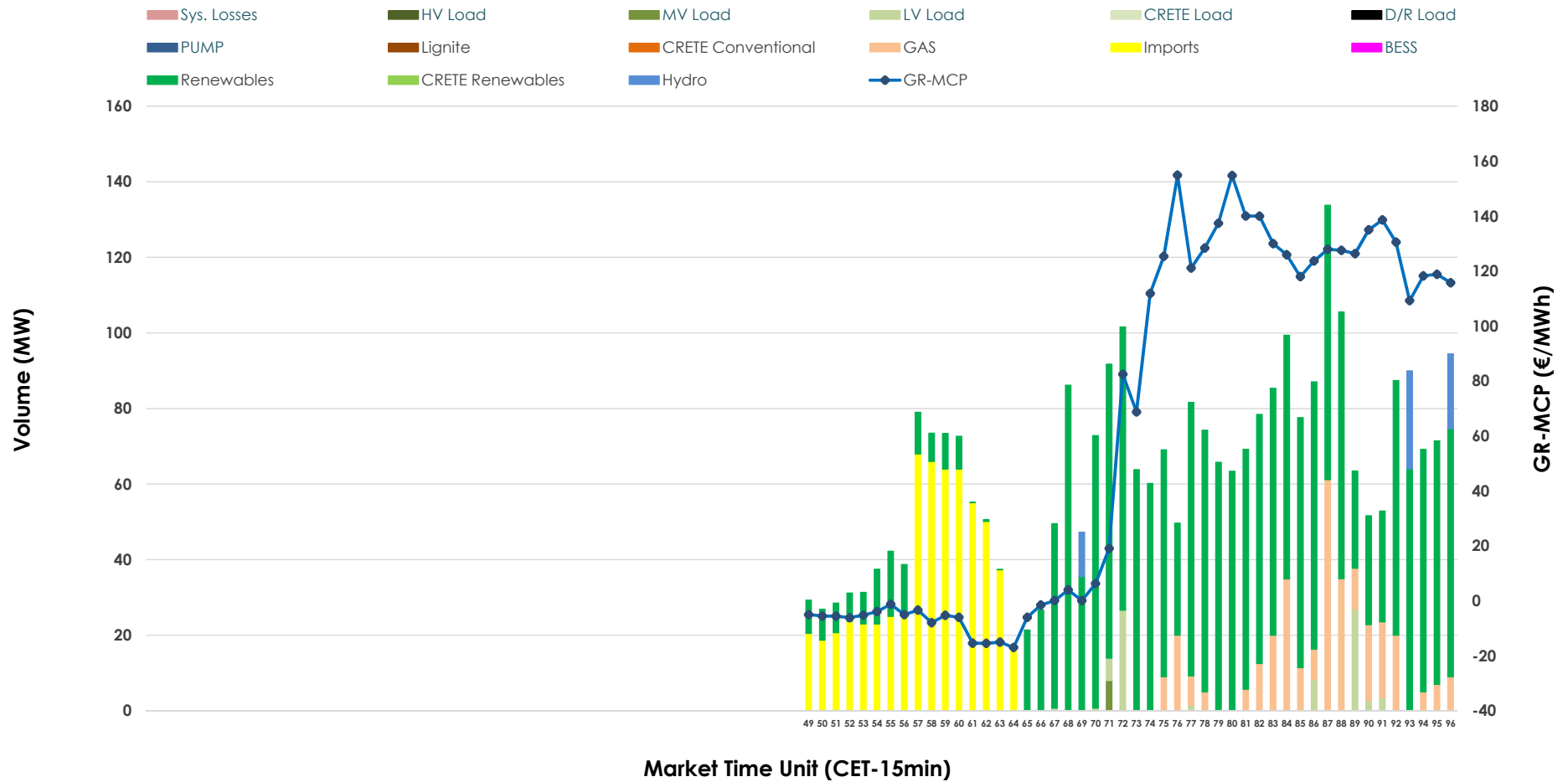


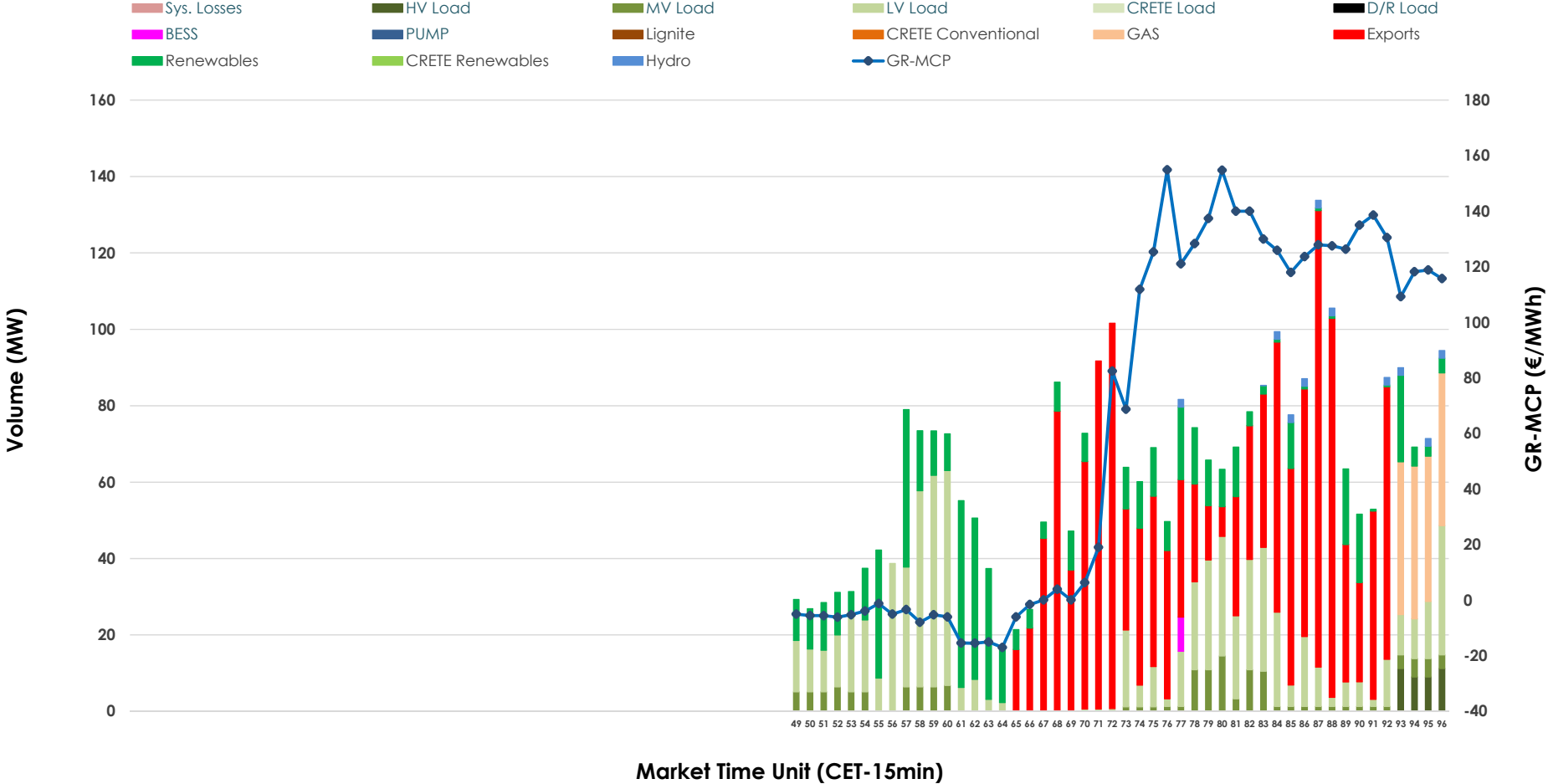


IDA '3' Market Outlook

24.05.2026 IDA '3' Market - Sell



24.05.2026 IDA '3' Market - Buy



GR Bidding Zone Weekly Figures

Delivery Day	18.05	19.05	20.05	21.05	22.05	23.05	24.05
	↑ 63%	↔ 12%	↓ -36%	↔ 32%	↓ -22%	↓ -16%	↓ -13%
Avg.MCP (€/MWh)	115.83	129.53	83.15	110.01	85.80	72.12	62.70
Max.MCP (€/MWh)	272.82	216.80	196.97	237.02	152.36	171.24	154.90
Min.MCP (€/MWh)	-5.23	63.92	-4.78	3.90	11.39	-2.23	-16.98
	↑ 96%	↔ 26%	↓ -37%	↑ 196%	↓ -69%	↔ 10%	↓ -15%
Tot.Vol(GWh)	2.23	2.81	1.78	5.28	1.63	1.80	1.53

Trades by Order Type

Delivery Day		18.05	19.05	20.05	21.05	22.05	23.05	24.05	
Ord Price Type		Sell & Buy Trades in (GWh) per Price Type							(%)
PPT	(S)	0.000	0.000	0.000	0.000	0.000	0.000	0.000	0.00%
HBD	(S)	0.670	0.893	0.836	2.108	0.789	0.858	0.616	80.43%
BLK	(S)	0.000	0.000	0.000	0.000	0.000	0.000	0.000	0.00%
CPL	(S)	0.446	0.511	0.055	0.530	0.026	0.040	0.150	19.57%
PPT	(B)	0.000	0.000	0.000	0.000	0.000	0.000	0.000	0.00%
HBD	(B)	1.071	1.185	0.635	2.179	0.478	0.566	0.418	54.50%
BLK	(B)	0.000	0.000	0.000	0.000	0.000	0.000	0.000	0.00%
CPL	(B)	0.046	0.219	0.256	0.459	0.337	0.332	0.349	45.50%
		Sell & Buy Orders Traded per Price Type							(%)
PPT	(S)	0	0	0	0	0	0	0	0.00%
HBD	(S)	183	126	233	292	144	167	119	100.00%
BLK	(S)	0	0	0	0	0	0	0	0.00%
PPT	(B)	0	0	0	0	0	0	0	0.00%
HBD	(B)	307	388	163	194	188	171	174	100.00%
BLK	(B)	0	0	0	0	0	0	0	0.00%

- MCP** Market Clearing Price (€/MWh)
- PPT** Priority Price-Taking
- HBD** Hybrid
- BLK** Block
- CPL** Market Coupling Flow

Trade's Volume Mix

	Sell - MWh	Buy - MWh	
Lignite (0.0%)	0	0	(0.0%)
Crete Conv. (0.0%)	0	0	(0.0%)
Gas (10.5%)	81	40	(5.2%)
Hydro (1.9%)	14	5	(0.7%)
Imports (19.6%)	150		
RES (65.2%)	500	140	(18.2%)
Crete RES (0.0%)	0	0	(0.0%)
BESS (0.0%)	0	2	(0.3%)
HV Load (0.0%)	0	10	(1.3%)
MV Load (0.3%)	2	38	(5.0%)
LV Load (2.6%)	20	183	(23.8%)
Crete Load (0.0%)	0	0	(0.0%)
Pumping (0.0%)	0	0	(0.0%)
Exports		349	(45.5%)
Sys.Losses (0.0%)	0	0	(0.0%)
D/R Load (0.0%)	0	0	(0.0%)

