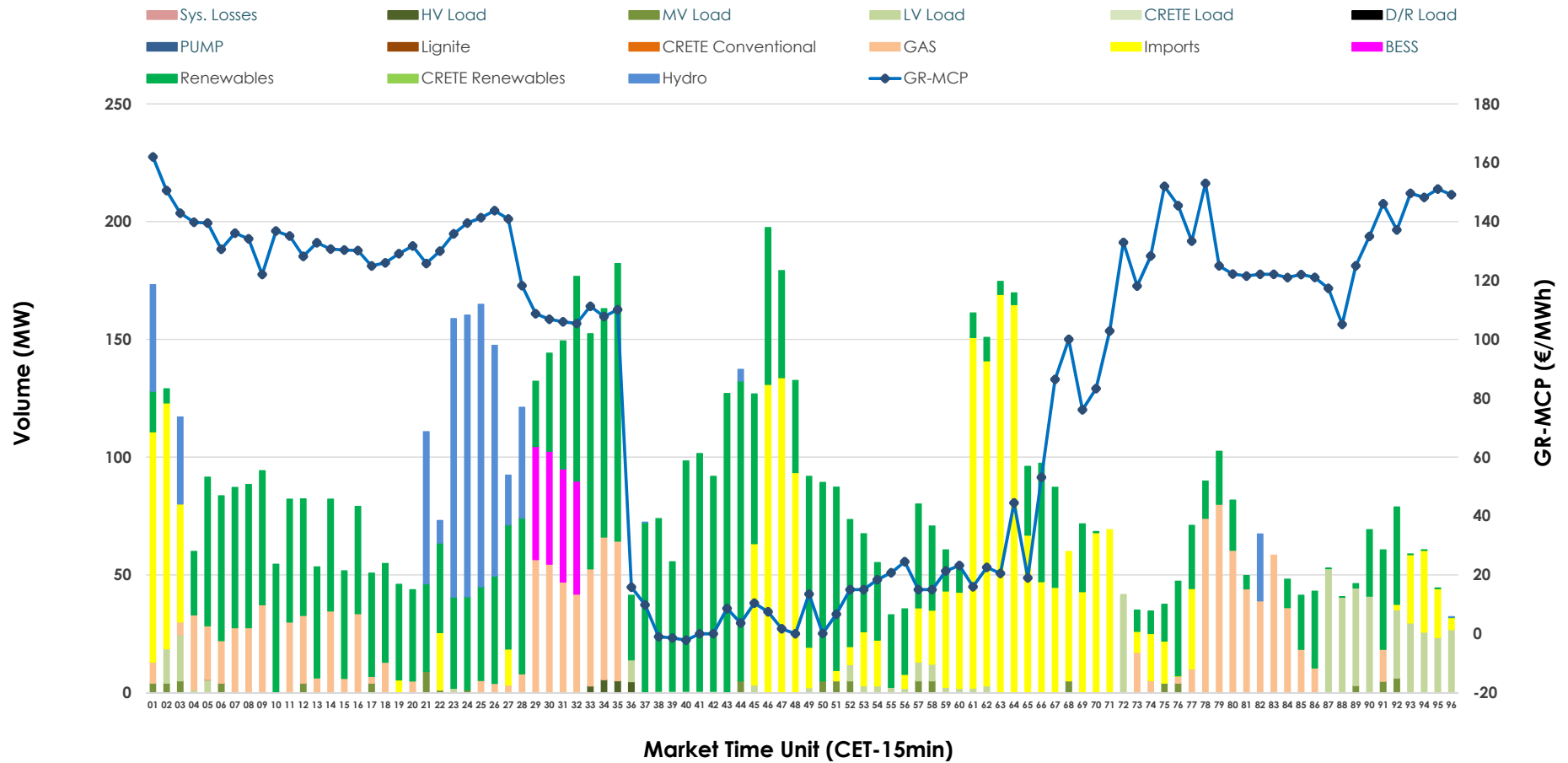


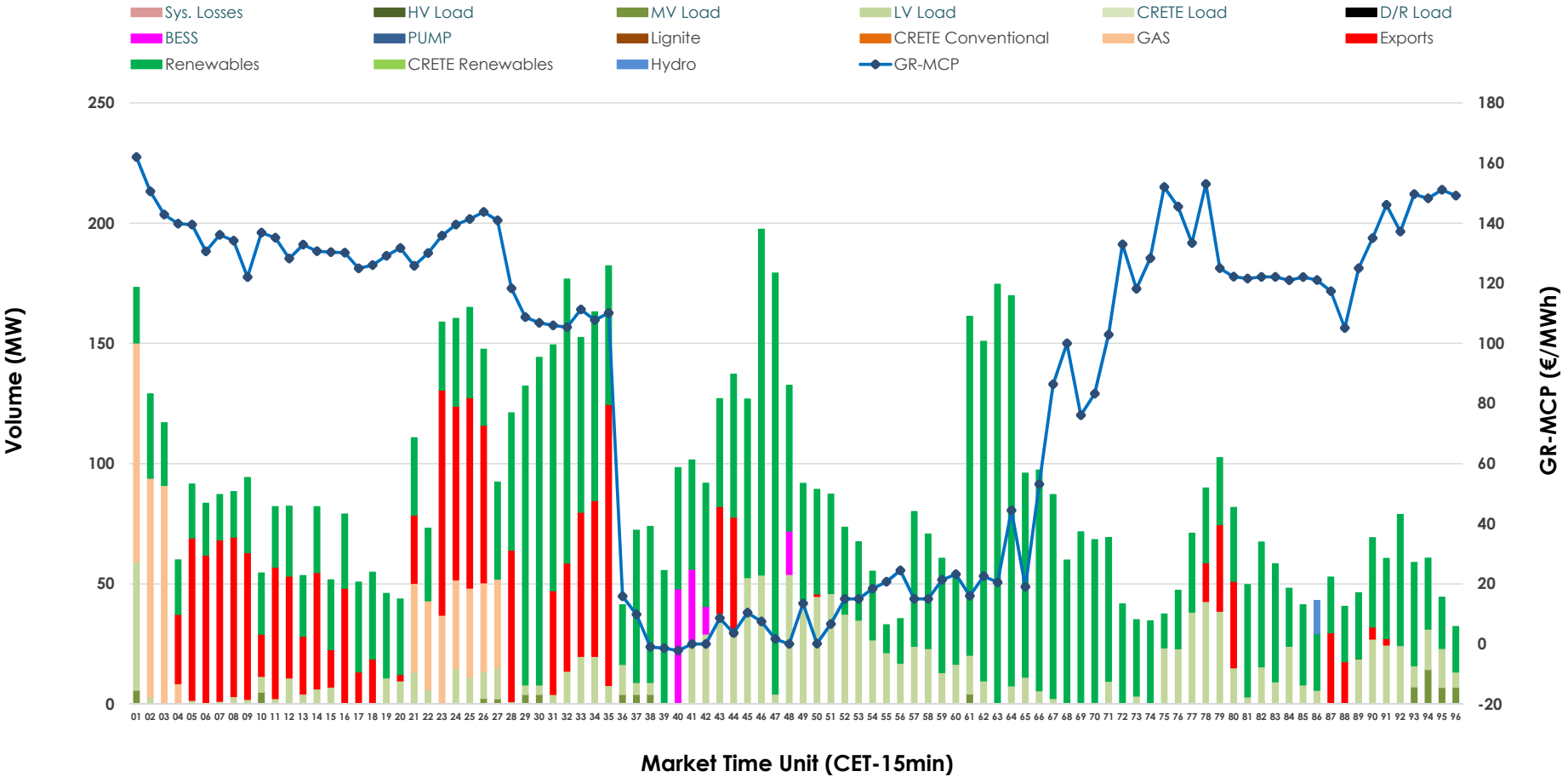


IDA '2' Market Outlook

22.05.2026 IDA '2' Market - Sell



22.05.2026 IDA '2' Market - Buy



GR Bidding Zone Weekly Figures

Delivery Day	16.05	17.05	18.05	19.05	20.05	21.05	22.05
	👇 -10%	👇 -12%	👆 36%	👉 29%	👇 -46%	👆 33%	👇 -2%
Avg.MCP (€/MWh)	82.13	72.35	98.59	127.58	69.29	92.33	90.57
Max.MCP (€/MWh)	133.13	155.79	281.79	231.13	203.57	221.99	161.98
Min.MCP (€/MWh)	10.02	-10.01	-8.32	71.02	-9.37	-10.26	-2.17
	👇 -23%	👉 25%	👆 57%	👇 -11%	👇 -6%	👇 -12%	👇 -6%
Tot.Vol(GWh)	3.11	3.90	6.11	5.45	5.14	4.55	4.28

Trades by Order Type

Delivery Day	16.05	17.05	18.05	19.05	20.05	21.05	22.05	
Ord Price Type	Sell & Buy Trades in (GWh) per Price Type							(%)
PPT (S)	0.000	0.000	0.000	0.000	0.000	0.000	0.000	0.00%
HBD (S)	1.365	0.900	2.778	1.464	2.483	1.964	1.614	75.38%
BLK (S)	0.000	0.000	0.000	0.000	0.000	0.000	0.000	0.00%
CPL (S)	0.192	1.052	0.276	1.261	0.086	0.309	0.527	24.62%
PPT (B)	0.000	0.000	0.000	0.000	0.000	0.000	0.000	0.00%
HBD (B)	0.907	1.861	2.994	2.401	1.762	1.744	1.739	81.22%
BLK (B)	0.000	0.000	0.000	0.000	0.000	0.000	0.000	0.00%
CPL (B)	0.650	0.091	0.061	0.324	0.807	0.529	0.402	18.78%
	Sell & Buy Orders Traded per Price Type							(%)
PPT (S)	0	0	0	0	0	0	0	0.00%
HBD (S)	336	353	482	350	332	268	311	100.00%
BLK (S)	0	0	0	0	0	0	0	0.00%
PPT (B)	0	0	0	0	0	0	0	0.00%
HBD (B)	271	647	1212	662	544	413	417	100.00%
BLK (B)	0	0	0	0	0	0	0	0.00%

MCP Market Clearing Price (€/MWh)
PPT Priority Price-Taking
HBD Hybrid
BLK Block
CPL Market Coupling Flow

Trade's Volume Mix

	Sell - MWh	Buy - MWh	
Lignite (0.0%)	0	0	(0.0%)
Crete Conv. (0.0%)	0	0	(0.0%)
Gas (14.0%)	300	135	(6.3%)
Hydro (8.3%)	178	3	(0.2%)
Imports (24.6%)	527		
RES (44.2%)	947	1,210	(56.5%)
Crete RES (0.0%)	0	0	(0.0%)
BESS (2.2%)	48	27	(1.3%)
HV Load (0.2%)	5	0	(0.0%)
MV Load (1.1%)	23	19	(0.9%)
LV Load (5.3%)	113	344	(16.1%)
Crete Load (0.0%)	0	0	(0.0%)
Pumping (0.0%)	0	0	(0.0%)
Exports		402	(18.8%)
Sys.Losses (0.0%)	0	0	(0.0%)
D/R Load (0.0%)	0	0	(0.0%)

