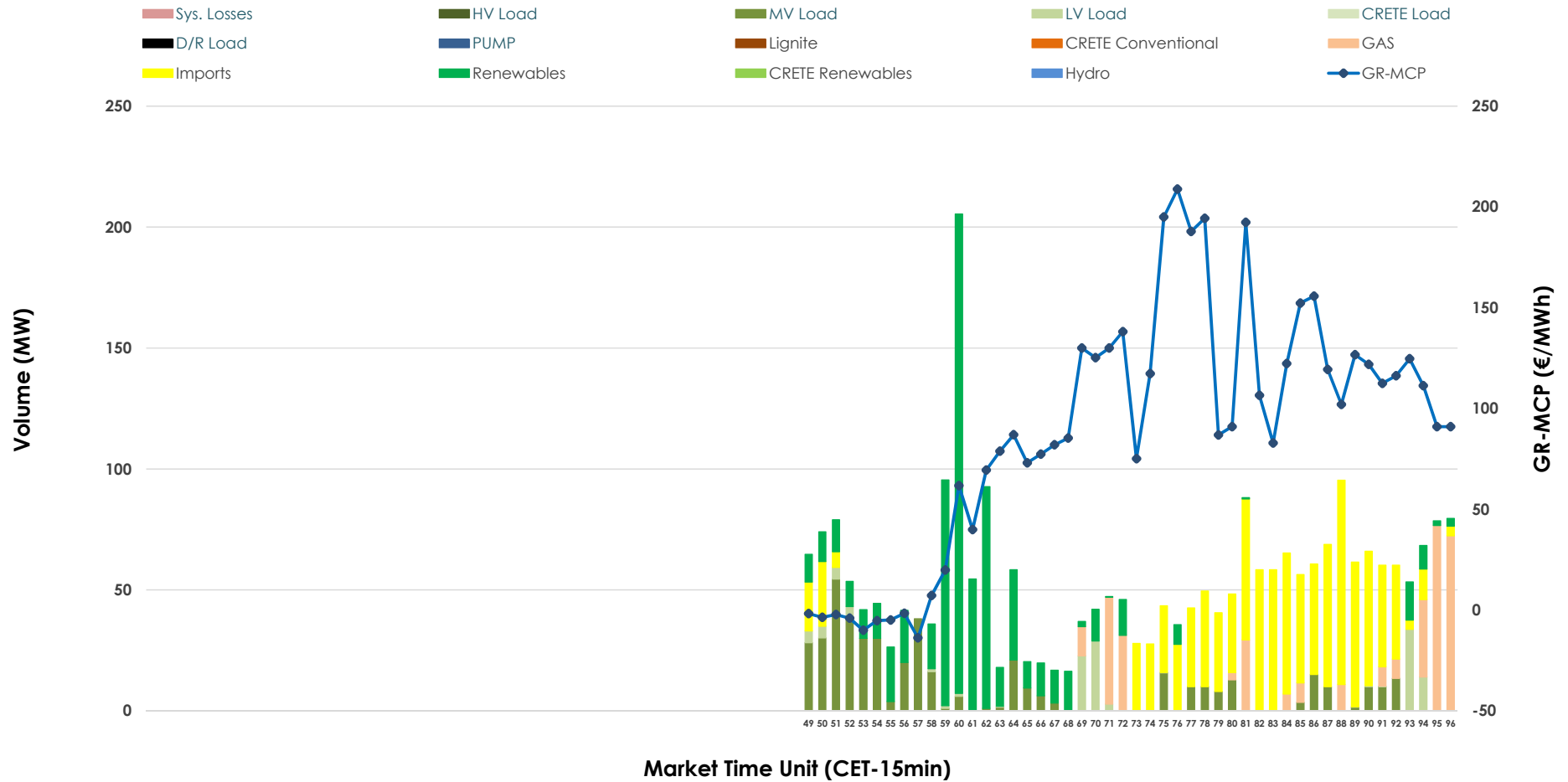


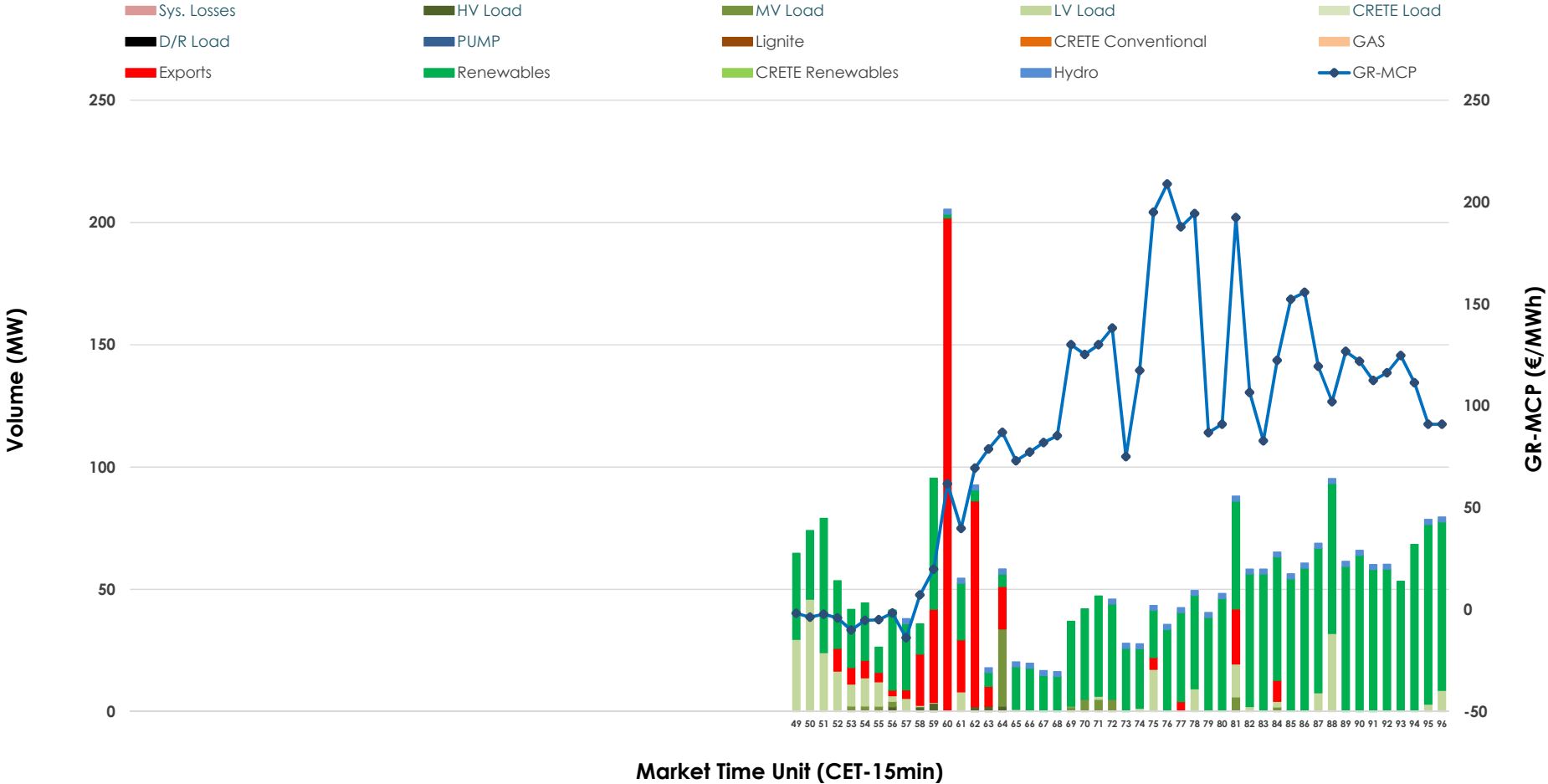


# IDA '3' Market Outlook

05.03.2026 IDA '3' Market - Sell



### 05.03.2026 IDA '3' Market - Buy



### GR Bidding Zone Weekly Figures

Delivery Day	27.02	28.02	01.03	02.03	03.03	04.03	05.03
	↑ 33%	↓ -33%	↔ 10%	↑ 80%	↔ 7%	↓ -6%	↓ -14%
<b>Avg.MCP (€/MWh)</b>	77.64	51.69	56.79	102.22	109.25	103.10	88.40
<b>Max.MCP (€/MWh)</b>	150.11	111.95	120.24	276.27	241.27	262.17	208.87
<b>Min.MCP (€/MWh)</b>	-4.19	-14.76	-35.00	-22.29	-12.26	-6.13	-13.79
	↔ 20%	→ 0%	↓ -10%	↔ 12%	↓ -49%	↔ 32%	↓ -14%
<b>Tot.Vol(GWh)</b>	2.29	2.28	2.04	2.28	1.17	1.55	1.33

### Trades by Order Type

Delivery Day		27.02	28.02	01.03	02.03	03.03	04.03	05.03	
<b>Ord Price Type</b>		<b>Sell &amp; Buy Trades in (GWh) per Price Type</b>							<b>(%)</b>
<b>PPT</b>	(S)	0.000	0.000	0.000	0.000	0.000	0.000	0.000	0.00%
<b>HBD</b>	(S)	0.596	1.010	0.842	1.097	0.533	0.644	0.420	63.04%
<b>BLK</b>	(S)	0.000	0.000	0.000	0.000	0.000	0.000	0.000	0.00%
<b>CPL</b>	(S)	0.548	0.128	0.178	0.043	0.053	0.132	0.246	36.96%
<b>PPT</b>	(B)	0.000	0.000	0.000	0.000	0.000	0.000	0.000	0.00%
<b>HBD</b>	(B)	1.050	0.878	0.952	0.675	0.416	0.562	0.550	82.57%
<b>BLK</b>	(B)	0.000	0.000	0.000	0.000	0.000	0.000	0.000	0.00%
<b>CPL</b>	(B)	0.094	0.260	0.067	0.465	0.170	0.214	0.116	17.43%
		<b>Sell &amp; Buy Orders Traded per Price Type</b>							<b>(%)</b>
<b>PPT</b>	(S)	0	0	0	0	0	0	0	0.00%
<b>HBD</b>	(S)	123	177	229	186	93	126	131	100.00%
<b>BLK</b>	(S)	0	0	0	0	0	0	0	0.00%
<b>PPT</b>	(B)	0	0	0	0	0	0	0	0.00%
<b>HBD</b>	(B)	315	216	129	175	227	261	216	100.00%
<b>BLK</b>	(B)	0	0	0	0	0	0	0	0.00%

**MCP** Market Clearing Price (€/MWh)  
**PPT** Priority Price-Taking  
**HBD** Hybrid  
**BLK** Block  
**CPL** Market Coupling Flow

### Trade's Volume Mix

		Sell - MWh	Buy - MWh	
<b>Lignite</b>	(0.0%)	0	0	(0.0%)
<b>Crete Conv.</b>	(0.0%)	0	0	(0.0%)
<b>Gas</b>	(12.9%)	86	0	(0.0%)
<b>Hydro</b>	(0.0%)	0	17	(2.5%)
<b>Imports</b>	(37.0%)	246		
<b>RES</b>	(28.2%)	188	446	(67.1%)
<b>Crete RES</b>	(0.0%)	0	0	(0.0%)
<b>HV Load</b>	(0.0%)	0	3	(0.5%)
<b>MV Load</b>	(17.2%)	115	16	(2.5%)
<b>LV Load</b>	(4.8%)	32	67	(10.0%)
<b>Crete Load</b>	(0.0%)	0	0	(0.0%)
<b>Pumping</b>	(0.0%)	0	0	(0.0%)
<b>Exports</b>			116	(17.4%)
<b>Sys.Losses</b>	(0.0%)	0	0	(0.0%)
<b>D/R Load</b>	(0.0%)	0	0	(0.0%)

