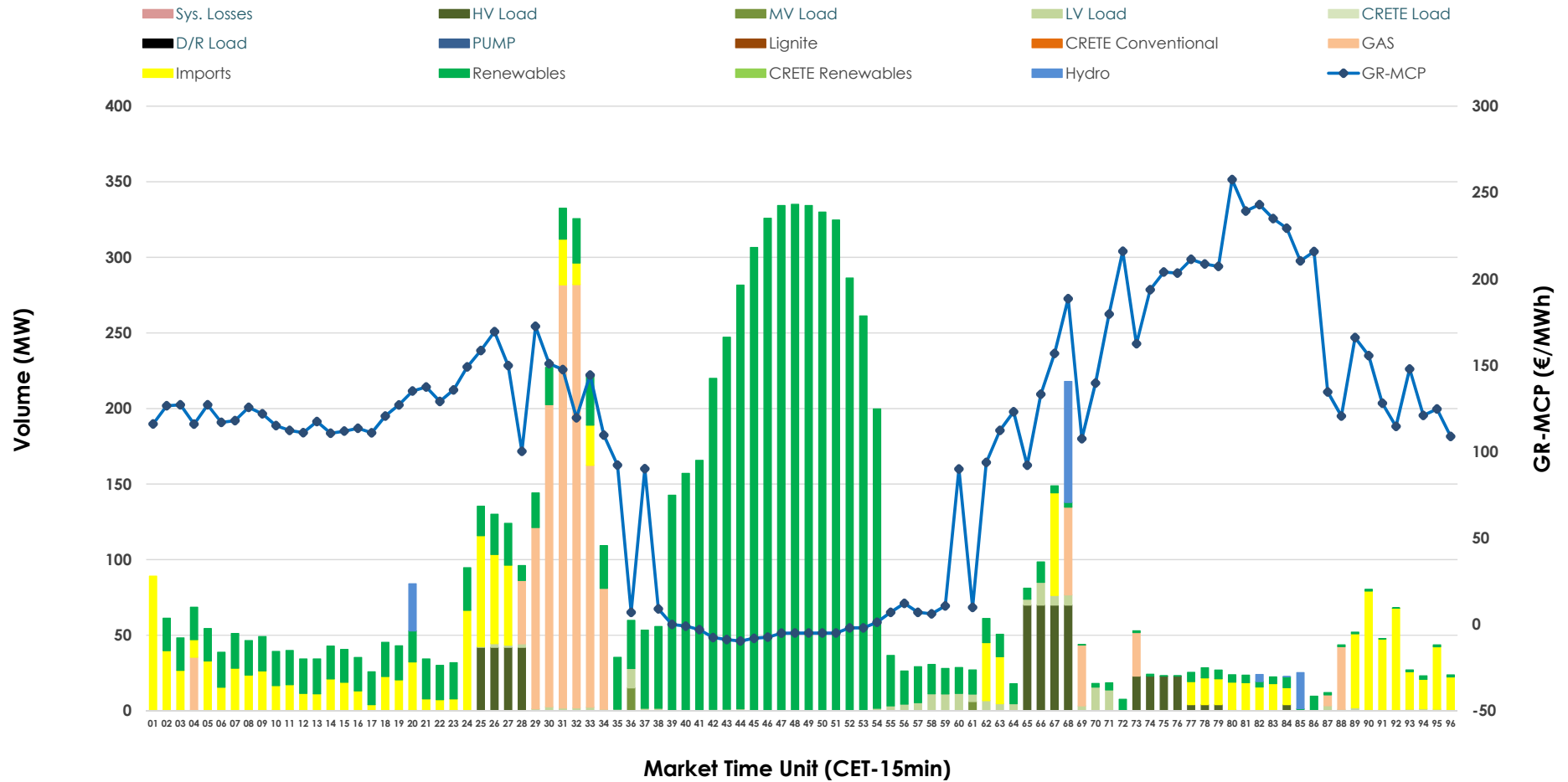


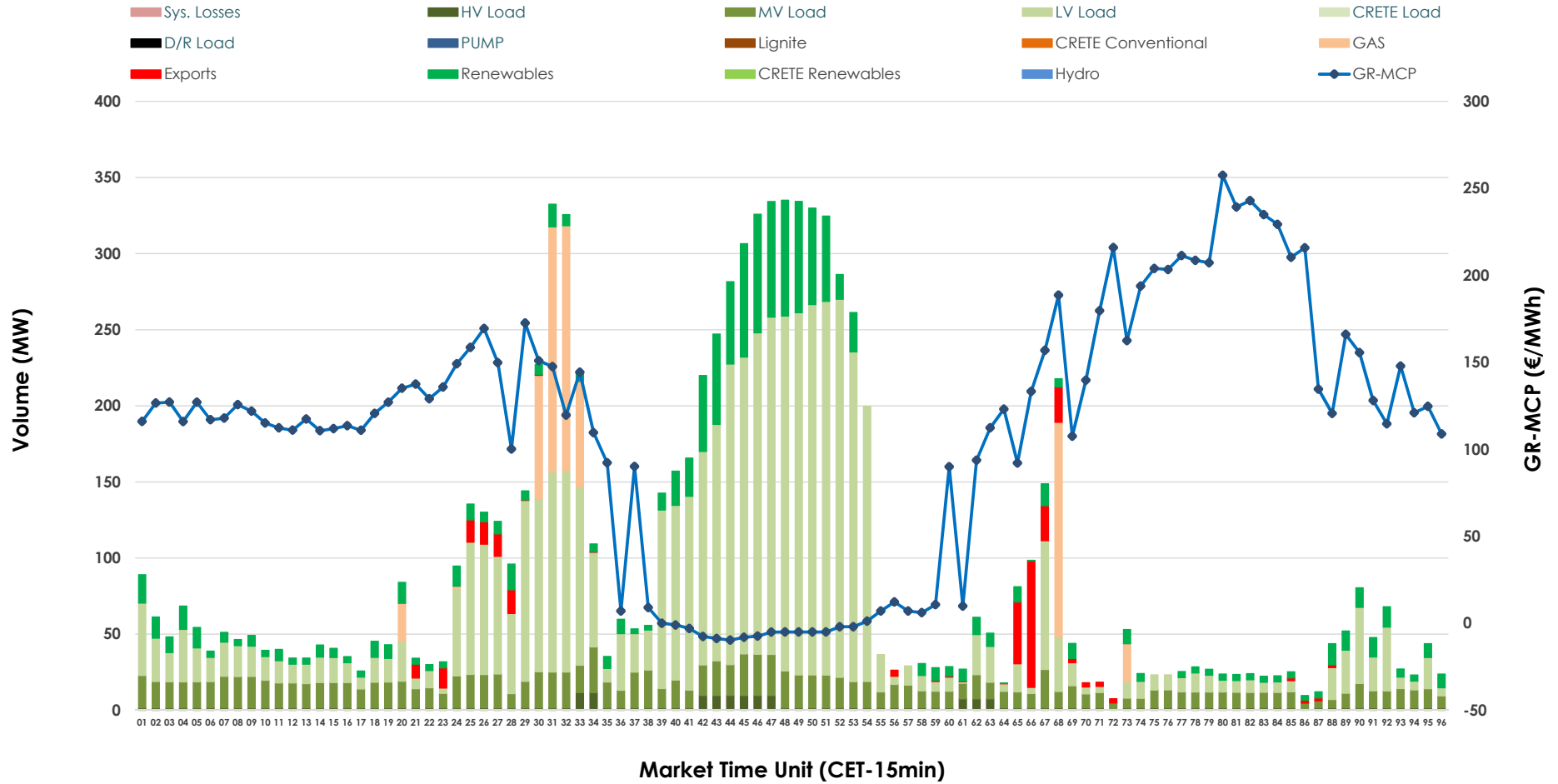


IDA '1' Market Outlook

12.03.2026 IDA '1' Market - Sell



12.03.2026 IDA '1' Market - Buy



GR Bidding Zone Weekly Figures

Delivery Day	06.03	07.03	08.03	09.03	10.03	11.03	12.03
	👇 -19%	👇 -4%	➡️ 0%	➡️ 0%	➡️ 2%	➡️ 16%	➡️ 18%
Avg.MCP (€/MWh)	81.18	77.97	77.99	78.31	79.81	92.43	109.46
Max.MCP (€/MWh)	211.99	161.96	163.76	251.15	250.86	243.25	257.52
Min.MCP (€/MWh)	-20.04	-18.65	-15.11	-15.00	-14.90	-6.99	-9.65
	👆 115%	👇 -53%	👇 -14%	👆 45%	➡️ 31%	👇 -46%	👆 79%
Tot.Vol(GWh)	6.29	2.95	2.53	3.68	4.82	2.58	4.61

Trades by Order Type

Delivery Day		06.03	07.03	08.03	09.03	10.03	11.03	12.03	
Ord Price Type		Sell & Buy Trades in (GWh) per Price Type							(%)
PPT	(S)	0.000	0.000	0.000	0.000	0.000	0.000	0.000	0.00%
HBD	(S)	2.666	1.263	0.957	1.689	2.271	1.087	1.942	84.34%
BLK	(S)	0.000	0.000	0.000	0.000	0.000	0.000	0.000	0.00%
CPL	(S)	0.481	0.214	0.307	0.149	0.140	0.203	0.361	15.66%
PPT	(B)	0.000	0.000	0.000	0.000	0.000	0.000	0.000	0.00%
HBD	(B)	2.469	1.355	1.173	1.678	2.365	1.124	2.233	96.98%
BLK	(B)	0.000	0.000	0.000	0.000	0.000	0.000	0.000	0.00%
CPL	(B)	0.678	0.123	0.090	0.160	0.046	0.166	0.070	3.02%
		Sell & Buy Orders Traded per Price Type							(%)
PPT	(S)	0	0	0	0	0	0	0	0.00%
HBD	(S)	326	220	64	89	435	222	286	100.00%
BLK	(S)	0	0	0	0	0	0	0	0.00%
PPT	(B)	0	0	0	0	0	0	0	0.00%
HBD	(B)	682	771	840	840	1017	922	927	100.00%
BLK	(B)	0	0	0	0	0	0	0	0.00%

- MCP** Market Clearing Price (€/MWh)
- PPT** Priority Price-Taking
- HBD** Hybrid
- BLK** Block
- CPL** Market Coupling Flow

Trade's Volume Mix

	Sell - MWh	Buy - MWh	
Lignite (0.0%)	0	0	(0.0%)
Crete Conv. (0.0%)	0	0	(0.0%)
Gas (14.9%)	343	166	(7.2%)
Hydro (1.5%)	35	0	(0.0%)
Imports (15.7%)	361		
RES (59.5%)	1,370	326	(14.2%)
Crete RES (0.0%)	0	0	(0.0%)
HV Load (6.0%)	139	57	(2.5%)
MV Load (0.2%)	6	371	(16.1%)
LV Load (2.1%)	48	1,313	(57.0%)
Crete Load (0.0%)	0	0	(0.0%)
Pumping (0.0%)	0	0	(0.0%)
Exports		70	(3.0%)
Sys.Losses (0.0%)	0	0	(0.0%)
D/R Load (0.0%)	0	0	(0.0%)

