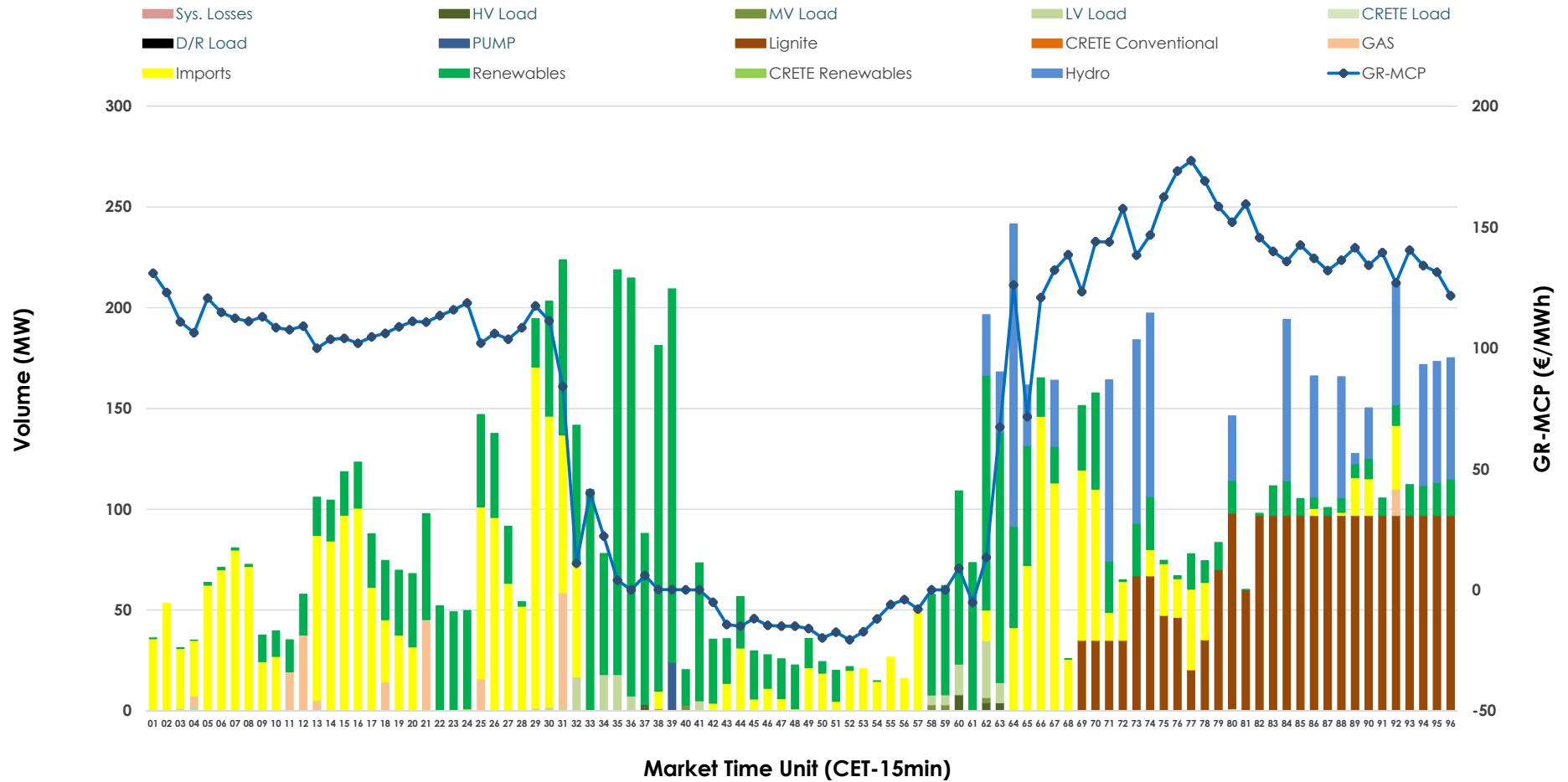


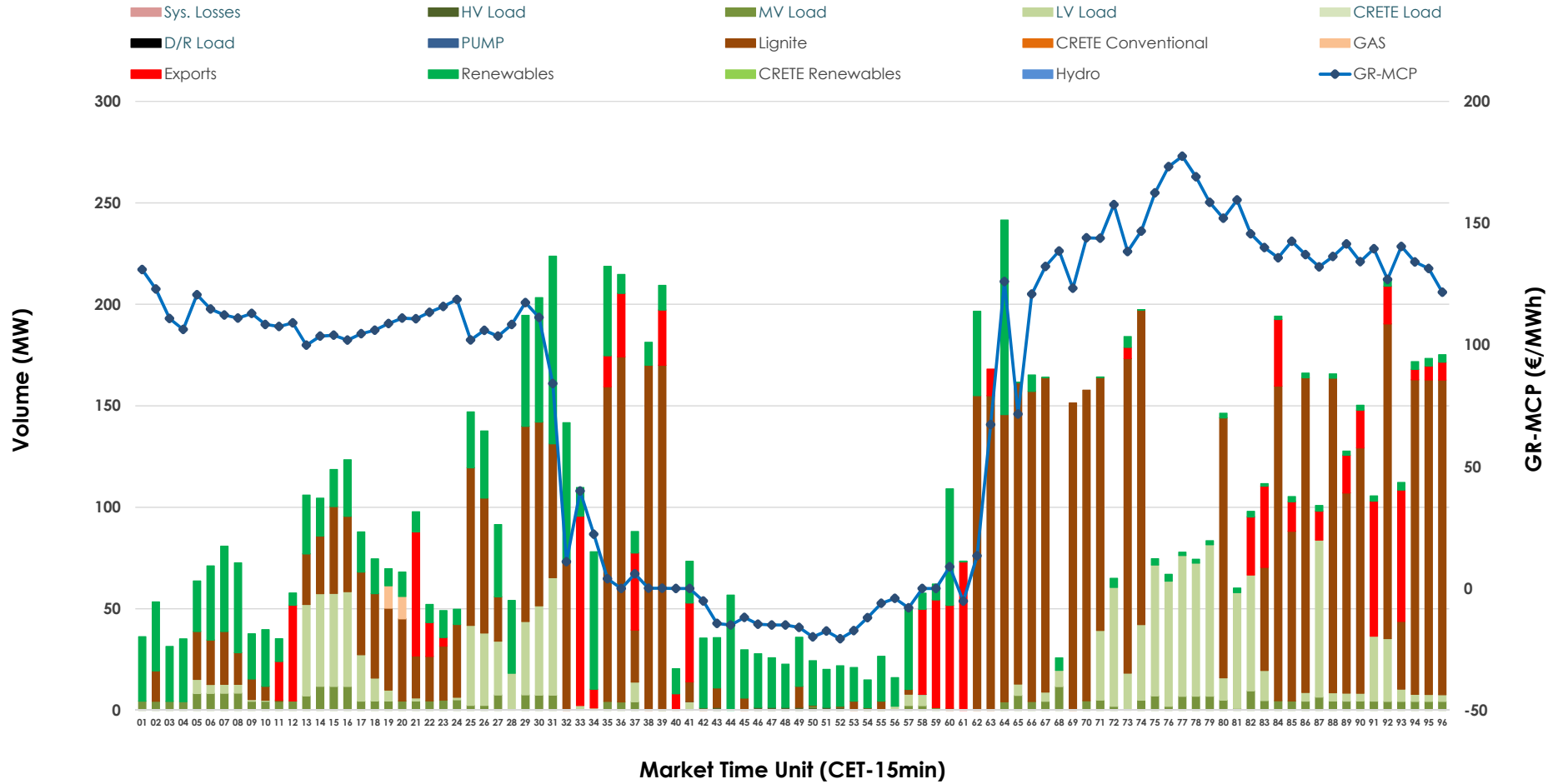


IDA '2' Market Outlook

14.03.2026 IDA '2' Market - Sell



14.03.2026 IDA '2' Market - Buy



GR Bidding Zone Weekly Figures

Delivery Day	08.03	09.03	10.03	11.03	12.03	13.03	14.03
	👇 -5%	👆 6%	👇 -2%	👆 23%	👆 14%	👇 -30%	👆 7%
Avg.MCP (€/MWh)	76.18	80.76	79.21	97.04	110.47	77.52	83.21
Max.MCP (€/MWh)	151.84	243.16	241.49	251.11	245.21	202.79	177.47
Min.MCP (€/MWh)	-15.92	-12.08	-20.20	-5.65	-5.52	-24.50	-20.66
	👇 -9%	👆 17%	👇 -8%	➡ 0%	👇 -26%	👆 68%	👇 -25%
Tot.Vol(GWh)	4.80	5.63	5.15	5.13	3.81	6.41	4.78

Trades by Order Type

Delivery Day		08.03	09.03	10.03	11.03	12.03	13.03	14.03	
Ord Price Type		Sell & Buy Trades in (GWh) per Price Type							(%)
PPT	(S)	0.000	0.000	0.000	0.000	0.000	0.000	0.000	0.00%
HBD	(S)	2.243	2.807	2.427	1.646	1.294	3.108	1.681	70.27%
BLK	(S)	0.000	0.000	0.000	0.000	0.000	0.000	0.000	0.00%
CPL	(S)	0.158	0.009	0.150	0.918	0.610	0.097	0.711	29.73%
PPT	(B)	0.000	0.000	0.000	0.000	0.000	0.000	0.000	0.00%
HBD	(B)	2.050	1.503	1.250	2.181	1.045	1.311	2.145	89.71%
BLK	(B)	0.000	0.000	0.000	0.000	0.000	0.000	0.000	0.00%
CPL	(B)	0.351	1.313	1.327	0.383	0.859	1.894	0.246	10.29%
		Sell & Buy Orders Traded per Price Type							(%)
PPT	(S)	0	0	0	0	0	0	0	0.00%
HBD	(S)	400	231	272	338	291	287	277	100.00%
BLK	(S)	0	0	0	0	0	0	0	0.00%
PPT	(B)	0	0	0	0	0	0	0	0.00%
HBD	(B)	554	640	443	362	315	286	376	100.00%
BLK	(B)	0	0	0	0	0	0	0	0.00%

MCP Market Clearing Price (€/MWh)
PPT Priority Price-Taking
HBD Hybrid
BLK Block
CPL Market Coupling Flow

Trade's Volume Mix

	Sell - MWh	Buy - MWh	
Lignite (22.0%)	526	1,250	(52.3%)
Crete Conv. (0.0%)	0	0	(0.0%)
Gas (2.2%)	53	6	(0.2%)
Hydro (10.9%)	262	0	(0.0%)
Imports (29.7%)	711		
RES (33.1%)	791	458	(19.2%)
Crete RES (0.0%)	0	0	(0.0%)
HV Load (0.2%)	5	3	(0.1%)
MV Load (0.1%)	3	90	(3.8%)
LV Load (1.5%)	35	338	(14.1%)
Crete Load (0.0%)	0	0	(0.0%)
Pumping (0.3%)	6	0	(0.0%)
Exports		246	(10.3%)
Sys.Losses (0.0%)	0	0	(0.0%)
D/R Load (0.0%)	0	0	(0.0%)

