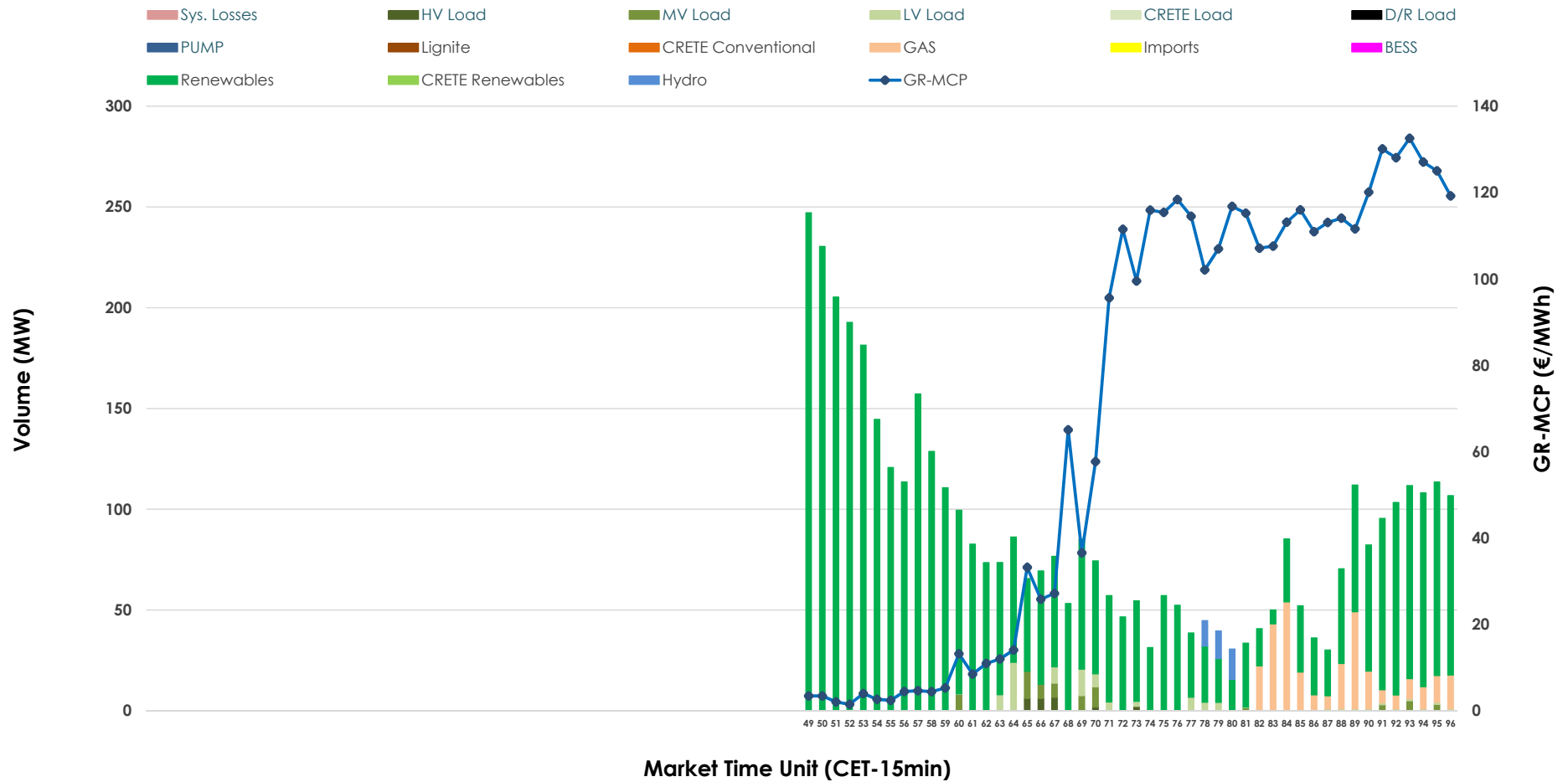


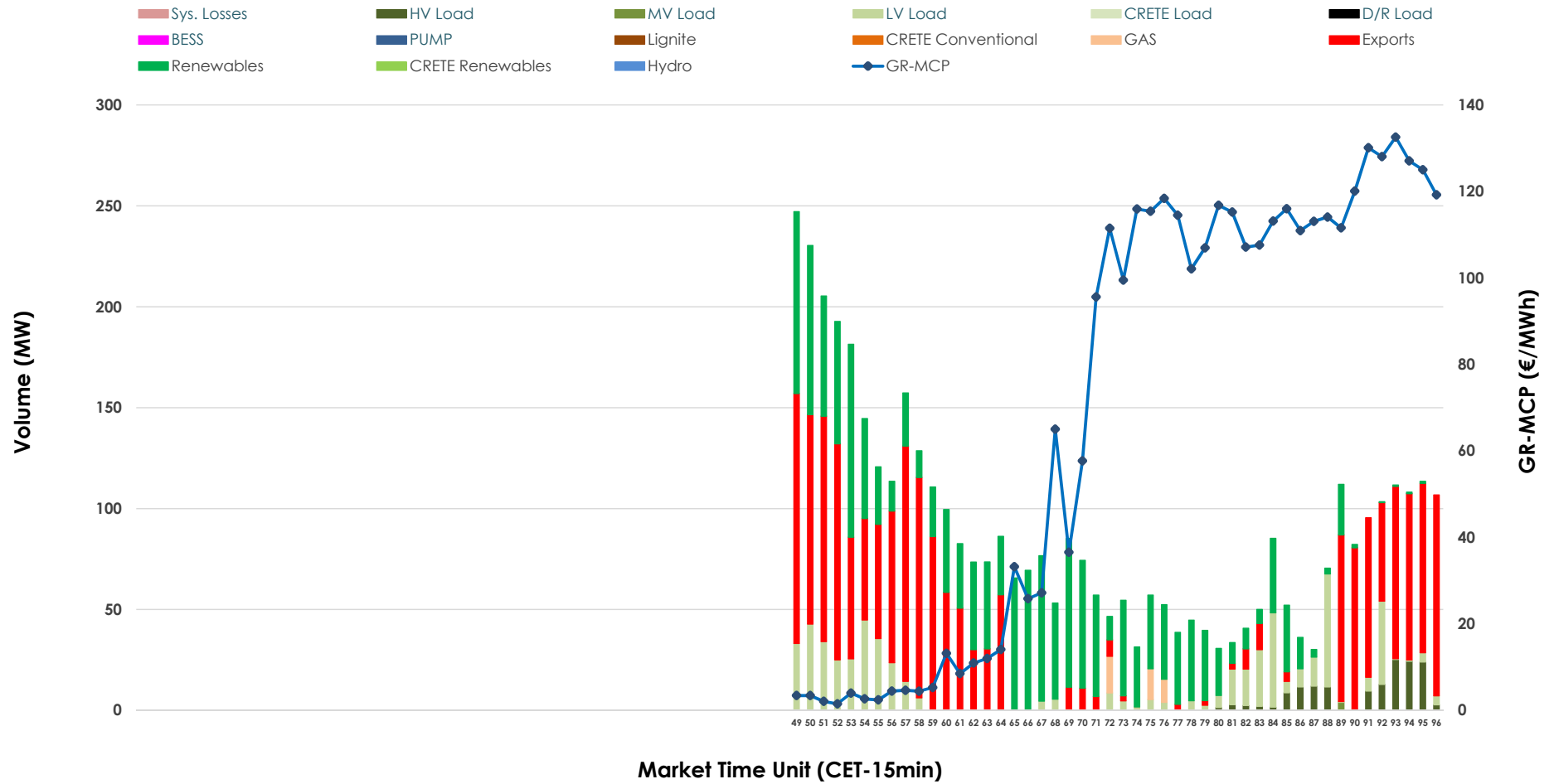


IDA '3' Market Outlook

16.05.2026 IDA '3' Market - Sell



16.05.2026 IDA '3' Market - Buy



GR Bidding Zone Weekly Figures

Delivery Day	10.05	11.05	12.05	13.05	14.05	15.05	16.05
	👇 -5%	👆 24%	👇 -36%	👆 44%	👇 -8%	👇 -8%	👇 -18%
Avg.MCP (€/MWh)	87.28	108.59	69.35	99.87	91.74	84.49	69.38
Max.MCP (€/MWh)	163.81	195.45	186.70	193.09	241.73	153.65	132.56
Min.MCP (€/MWh)	4.99	20.00	0.90	-3.00	-10.36	0.01	1.52
	👆 2%	👆 73%	👆 4%	👉 -1%	👇 -21%	👆 49%	👇 -7%
Tot.Vol(GWh)	1.13	1.95	2.02	2.00	1.57	2.34	2.18

Trades by Order Type

Delivery Day		10.05	11.05	12.05	13.05	14.05	15.05	16.05	
Ord Price Type		Sell & Buy Trades in (GWh) per Price Type							(%)
PPT	(S)	0.000	0.000	0.000	0.000	0.000	0.000	0.000	0.00%
HBD	(S)	0.502	0.661	1.009	0.965	0.623	0.806	1.089	100.00%
BLK	(S)	0.000	0.000	0.000	0.000	0.000	0.000	0.000	0.00%
CPL	(S)	0.062	0.312	0.000	0.036	0.163	0.364	0.000	0.00%
PPT	(B)	0.000	0.000	0.000	0.000	0.000	0.000	0.000	0.00%
HBD	(B)	0.531	0.736	0.844	0.874	0.771	1.144	0.603	55.36%
BLK	(B)	0.000	0.000	0.000	0.000	0.000	0.000	0.000	0.00%
CPL	(B)	0.033	0.237	0.165	0.127	0.015	0.025	0.486	44.64%
		Sell & Buy Orders Traded per Price Type							(%)
PPT	(S)	0	0	0	0	0	0	0	0.00%
HBD	(S)	204	203	185	254	164	112	220	100.00%
BLK	(S)	0	0	0	0	0	0	0	0.00%
PPT	(B)	0	0	0	0	0	0	0	0.00%
HBD	(B)	169	135	115	183	112	246	129	100.00%
BLK	(B)	0	0	0	0	0	0	0	0.00%

- MCP** Market Clearing Price (€/MWh)
- PPT** Priority Price-Taking
- HBD** Hybrid
- BLK** Block
- CPL** Market Coupling Flow

Trade's Volume Mix

	Sell - MWh	Buy - MWh	
Lignite	0	0	(0.0%)
Crete Conv.	0	0	(0.0%)
Gas	77	11	(1.0%)
Hydro	10	0	(0.0%)
Imports	0		
RES	956	405	(37.2%)
Crete RES	0	0	(0.0%)
BESS	0	0	(0.0%)
HV Load	6	38	(3.5%)
MV Load	16	1	(0.1%)
LV Load	24	147	(13.5%)
Crete Load	0	0	(0.0%)
Pumping	0	0	(0.0%)
Exports		486	(44.6%)
Sys.Losses	0	0	(0.0%)
D/R Load	0	0	(0.0%)

