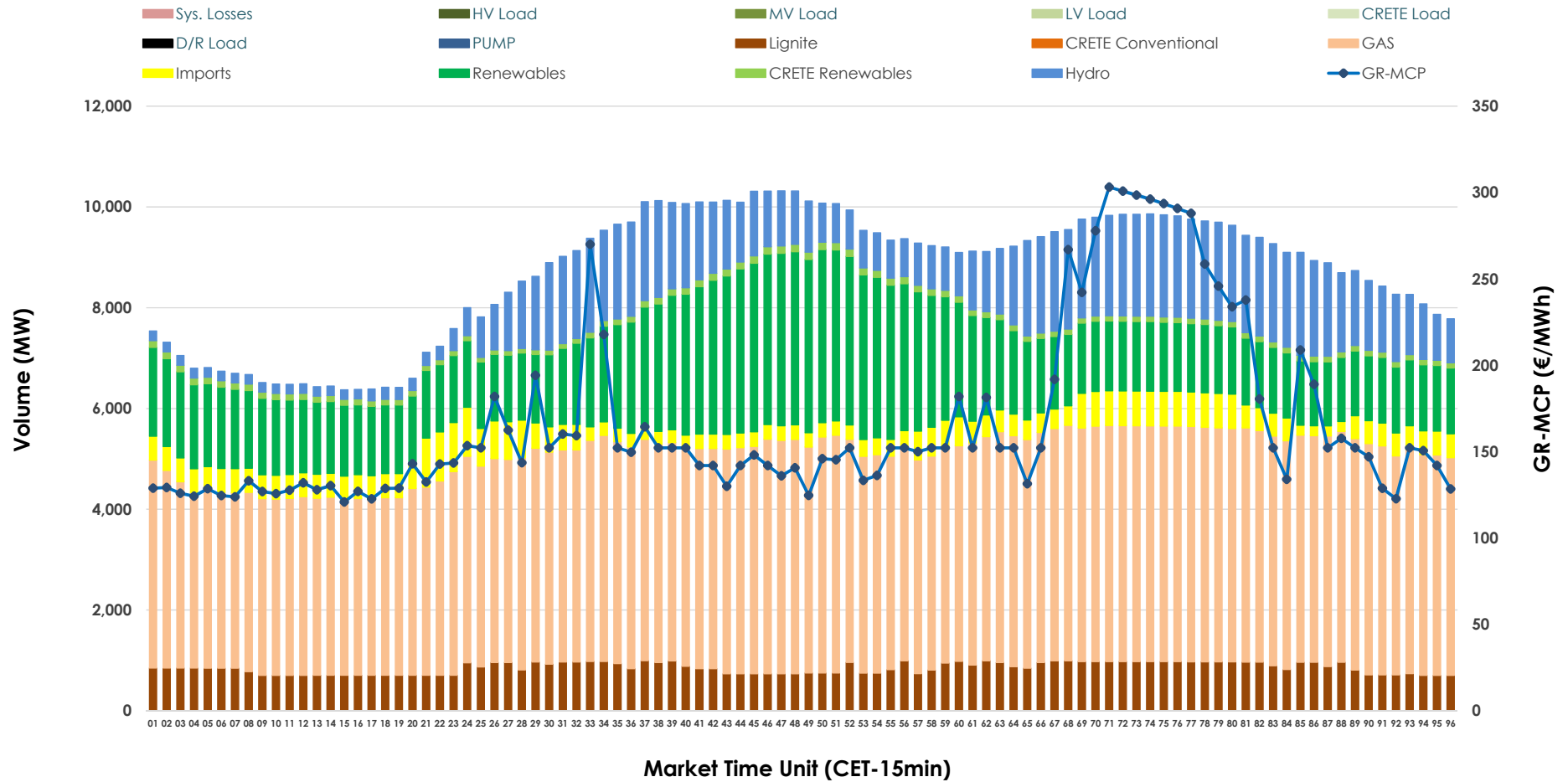


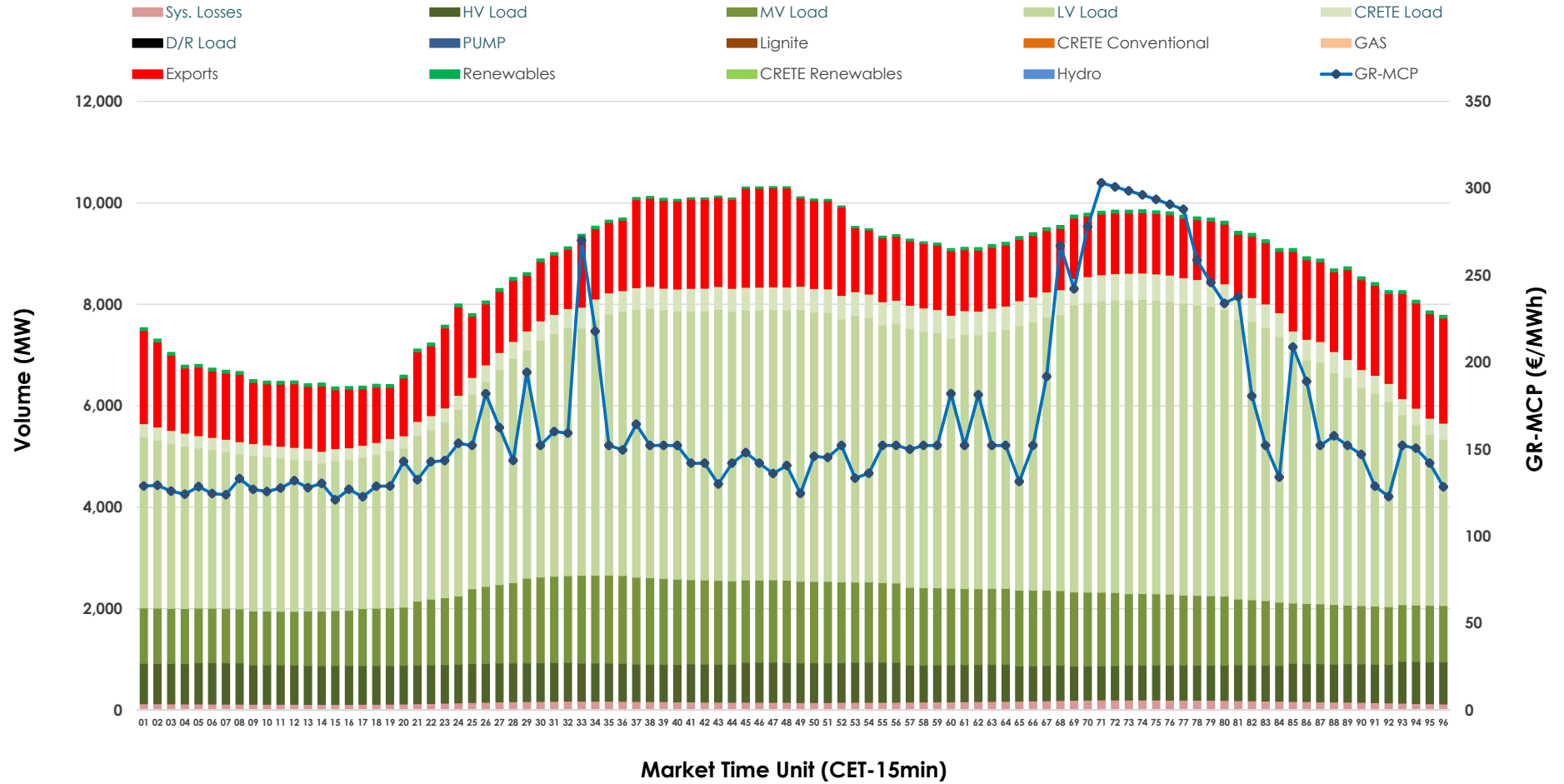


Day-Ahead Market Outlook

22.01.2026 Day-Ahead Market - Sell



22.01.2026 Day-Ahead Market - Buy



GR Bidding Zone Weekly Figures

Delivery Day	16.01	17.01	18.01	19.01	20.01	21.01	22.01
	👇 -5%	👇 -24%	👉 0%	👉 13%	👉 2%	👉 30%	👉 14%
Avg.MCP (€/MWh)	126.58	96.63	96.80	109.79	112.19	146.16	166.64
Max.MCP (€/MWh)	207.32	145.50	161.30	179.33	168.88	219.71	303.18
Min.MCP (€/MWh)	75.00	75.87	76.30	85.27	83.22	112.66	120.92
	👇 -5%	👉 3%	👇 -3%	👉 14%	👉 1%	👇 -4%	👇 -7%
Tot.Vol(GWh)	408.72	421.63	409.46	467.60	470.26	450.65	418.57

Trades by Order Type

Delivery Day		16.01	17.01	18.01	19.01	20.01	21.01	22.01	
Ord Price Type		Sell & Buy Trades in (GWh) per Price Type							(%)
PPT	(S)	64.295	84.263	93.026	88.536	85.075	74.579	63.071	30.14%
HBD	(S)	69.338	77.931	77.276	91.996	91.571	85.064	70.433	33.65%
BLK	(S)	67.165	48.620	34.426	52.894	57.008	65.547	72.431	34.61%
CPL	(S)	3.563	0.000	0.000	0.375	1.476	0.135	3.353	1.60%
PPT	(B)	15.923	14.574	14.643	17.944	17.500	17.485	17.078	8.16%
HBD	(B)	156.175	154.660	150.739	176.493	179.976	176.297	173.142	82.73%
BLK	(B)	0.000	0.000	0.000	0.000	0.000	0.000	0.000	0.00%
CPL	(B)	32.263	41.579	39.346	39.363	37.654	31.542	19.067	9.11%
		Sell & Buy Orders Traded per Price Type							(%)
PPT	(S)	2164	2046	2185	2109	2069	2039	2014	37.74%
HBD	(S)	2962	2727	2718	2693	2977	3262	3301	61.85%
BLK	(S)	22	21	14	17	19	18	22	0.41%
PPT	(B)	2283	2274	2404	2357	2350	2276	2260	35.02%
HBD	(B)	4065	4057	4111	4190	4177	4090	4193	64.98%
BLK	(B)	0	0	0	0	0	0	0	0.00%

MCP Market Clearing Price (€/MWh)
PPT Priority Price-Taking
HBD Hybrid
BLK Block
CPL Market Coupling Flow

Trade's Volume Mix

		Sell - MWh	Buy - MWh	
Lignite	(9.8%)	20,421	0	(0.0%)
Crete Conv.	(0.0%)	0	0	(0.0%)
Gas	(48.8%)	102,194	0	(0.0%)
Hydro	(13.4%)	28,085	0	(0.0%)
Imports	(5.4%)	11,359		
RES	(21.2%)	44,426	1,135	(0.5%)
Crete RES	(1.3%)	2,801	0	(0.0%)
HV Load	(0.0%)	0	18,008	(8.6%)
MV Load	(0.0%)	0	33,326	(15.9%)
LV Load	(0.0%)	0	109,627	(52.4%)
Crete Load	(0.0%)	0	9,430	(4.5%)
Pumping	(0.0%)	0	0	(0.0%)
Exports			33,914	(16.2%)
Sys.Losses	(0.0%)	0	3,847	(1.8%)
D/R Load	(0.0%)	0	0	(0.0%)

