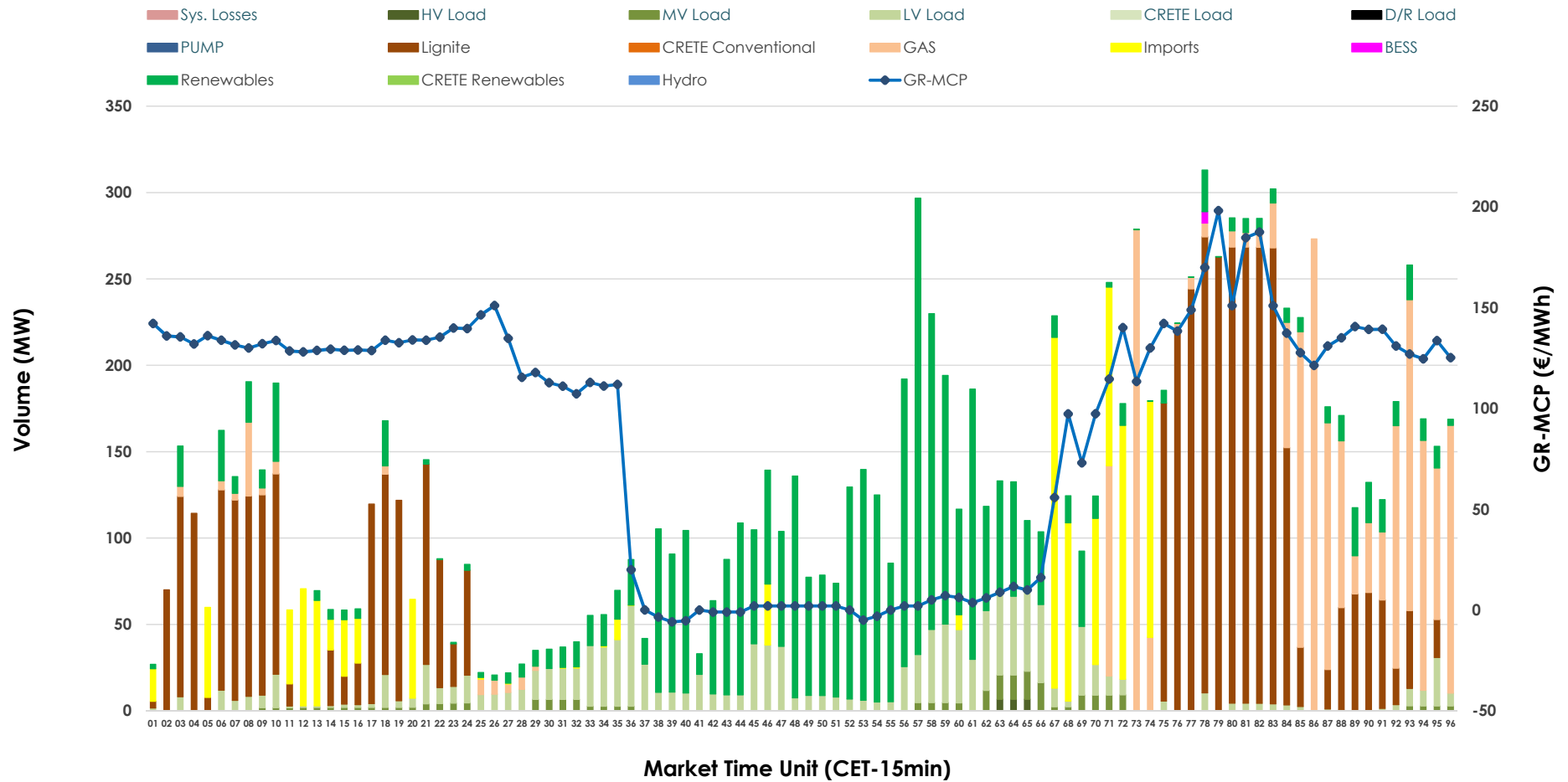


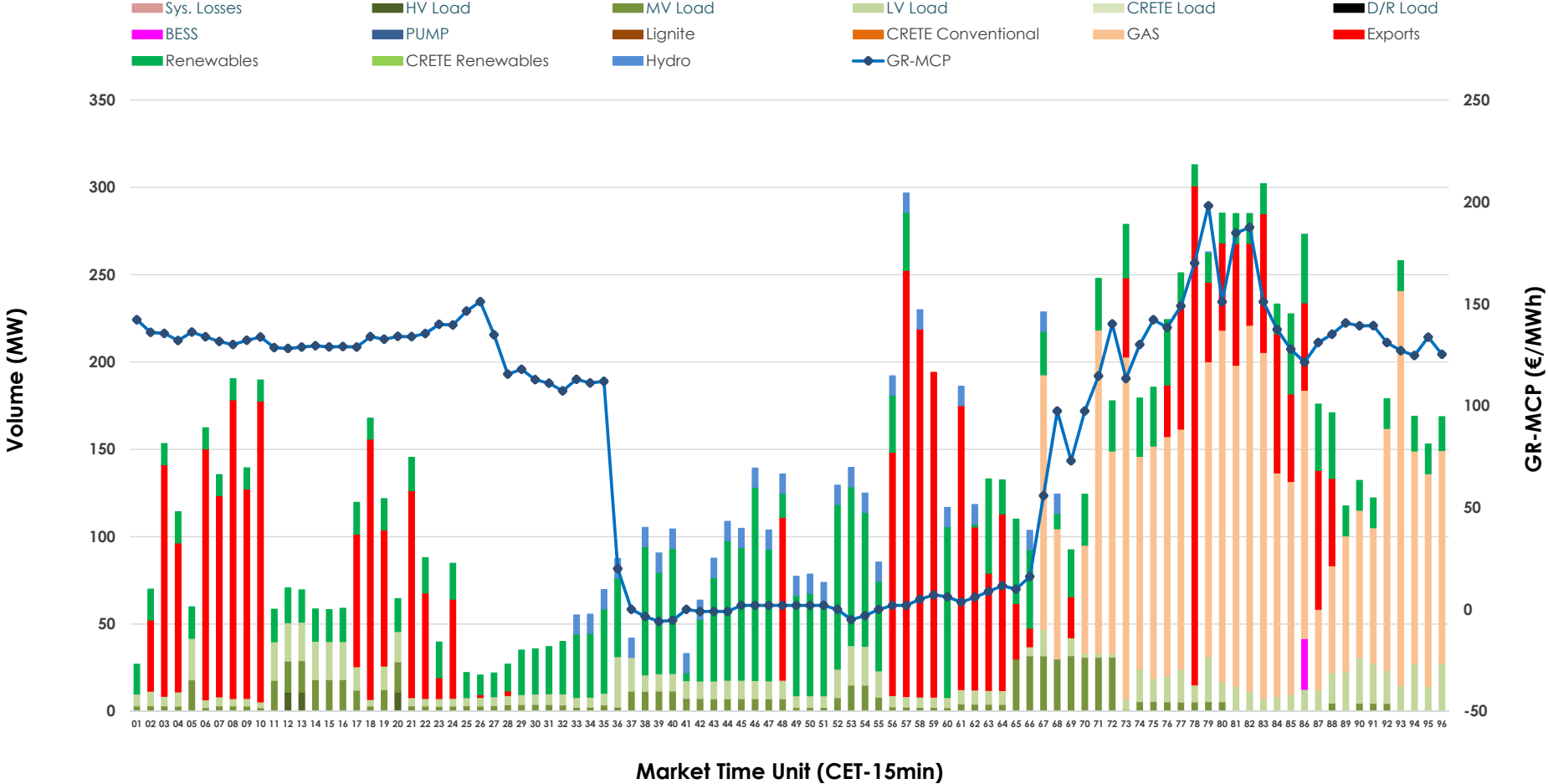


# IDA '1' Market Outlook

28.05.2026 IDA '1' Market - Sell



### 28.05.2026 IDA '1' Market - Buy



### GR Bidding Zone Weekly Figures

Delivery Day	22.05	23.05	24.05	25.05	26.05	27.05	28.05
	↗ 7%	↘ -20%	↘ -17%	↗ 19%	↗ 14%	↗ 15%	↘ -5%
<b>Avg.MCP (€/MWh)</b>	91.40	73.10	60.85	72.34	82.27	94.60	89.80
<b>Max.MCP (€/MWh)</b>	165.99	185.18	164.90	173.66	206.92	277.17	198.13
<b>Min.MCP (€/MWh)</b>	-6.39	-3.17	-11.00	-7.44	-12.94	-7.68	-5.86
	↗ 40%	↘ -12%	↗ 3%	↘ -41%	↗ 32%	↘ -15%	↗ 98%
<b>Tot.Vol(GWh)</b>	5.40	4.77	4.92	2.89	3.80	3.24	6.41

### Trades by Order Type

Delivery Day		22.05	23.05	24.05	25.05	26.05	27.05	28.05	
<b>Ord Price Type</b>		<b>Sell &amp; Buy Trades in (GWh) per Price Type</b>							<b>(%)</b>
<b>PPT</b>	(S)	0.000	0.000	0.000	0.000	0.000	0.000	0.000	0.00%
<b>HBD</b>	(S)	2.290	1.726	1.618	1.386	1.798	1.453	2.903	90.54%
<b>BLK</b>	(S)	0.000	0.000	0.000	0.000	0.000	0.000	0.000	0.00%
<b>CPL</b>	(S)	0.412	0.660	0.844	0.058	0.102	0.169	0.303	9.46%
<b>PPT</b>	(B)	0.000	0.000	0.000	0.000	0.000	0.000	0.000	0.00%
<b>HBD</b>	(B)	1.613	2.280	2.313	1.024	1.517	1.608	2.224	69.35%
<b>BLK</b>	(B)	0.000	0.000	0.000	0.000	0.000	0.000	0.000	0.00%
<b>CPL</b>	(B)	1.089	0.106	0.149	0.420	0.383	0.013	0.983	30.65%
		<b>Sell &amp; Buy Orders Traded per Price Type</b>							<b>(%)</b>
<b>PPT</b>	(S)	0	0	0	0	0	0	0	0.00%
<b>HBD</b>	(S)	290	415	378	196	349	306	371	100.00%
<b>BLK</b>	(S)	0	0	0	0	0	0	0	0.00%
<b>PPT</b>	(B)	0	0	0	0	0	0	0	0.00%
<b>HBD</b>	(B)	639	784	672	448	647	579	643	100.00%
<b>BLK</b>	(B)	0	0	0	0	0	0	0	0.00%

- MCP** Market Clearing Price (€/MWh)
- PPT** Priority Price-Taking
- HBD** Hybrid
- BLK** Block
- CPL** Market Coupling Flow

### Trade's Volume Mix

	Sell - MWh	Buy - MWh	
<b>Lignite</b> (34.1%)	1,093	0	(0.0%)
<b>Crete Conv.</b> (0.0%)	0	0	(0.0%)
<b>Gas</b> (17.1%)	549	935	(29.2%)
<b>Hydro</b> (0.0%)	0	88	(2.7%)
<b>Imports</b> (9.5%)	303		
<b>RES</b> (26.8%)	860	730	(22.8%)
<b>Crete RES</b> (0.0%)	0	0	(0.0%)
<b>BESS</b> (0.1%)	2	7	(0.2%)
<b>HV Load</b> (0.2%)	5	8	(0.3%)
<b>MV Load</b> (1.7%)	56	188	(5.8%)
<b>LV Load</b> (10.5%)	338	267	(8.3%)
<b>Crete Load</b> (0.0%)	0	0	(0.0%)
<b>Pumping</b> (0.0%)	0	0	(0.0%)
<b>Exports</b>		983	(30.6%)
<b>Sys.Losses</b> (0.0%)	0	0	(0.0%)
<b>D/R Load</b> (0.0%)	0	0	(0.0%)

