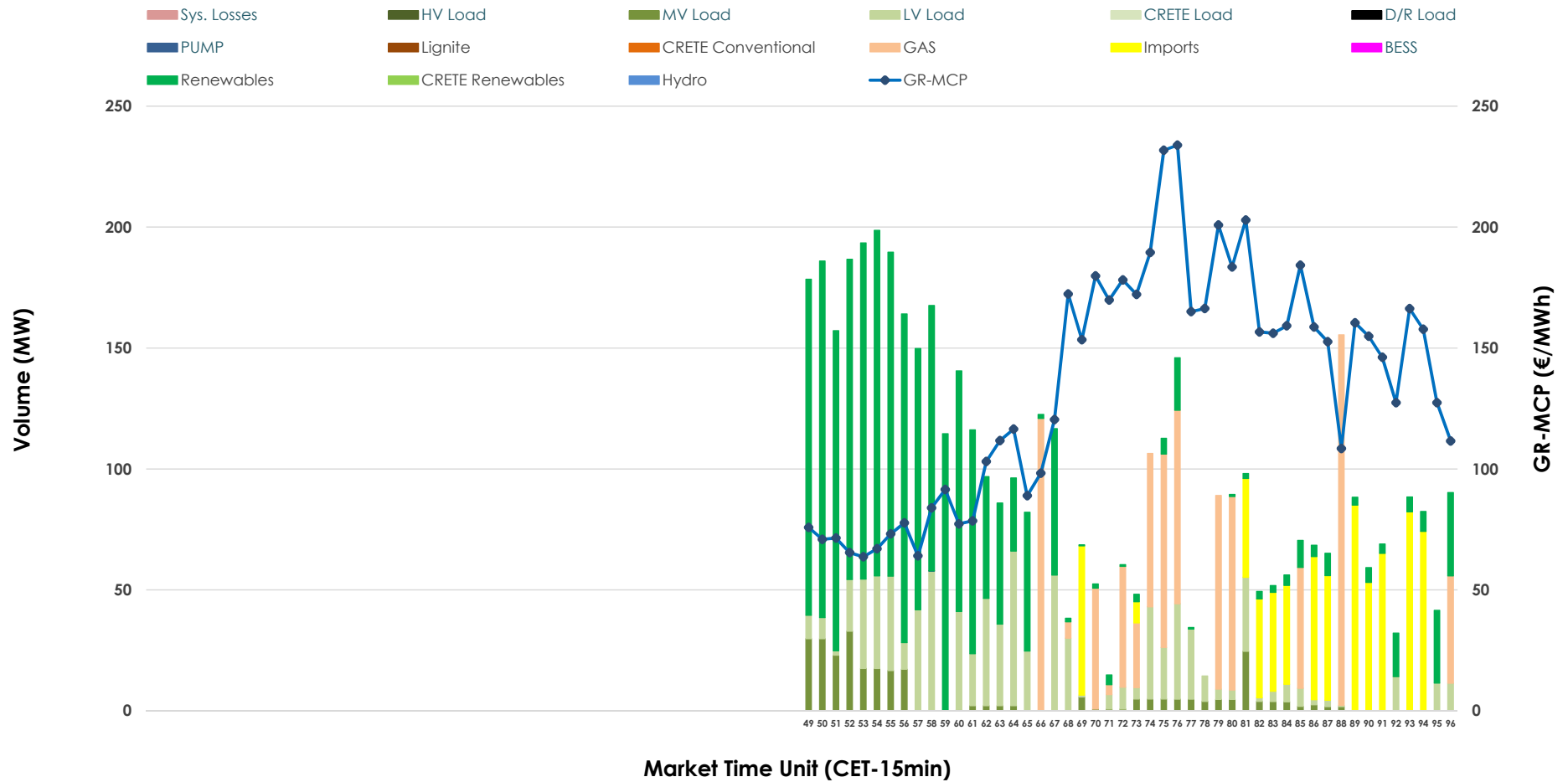


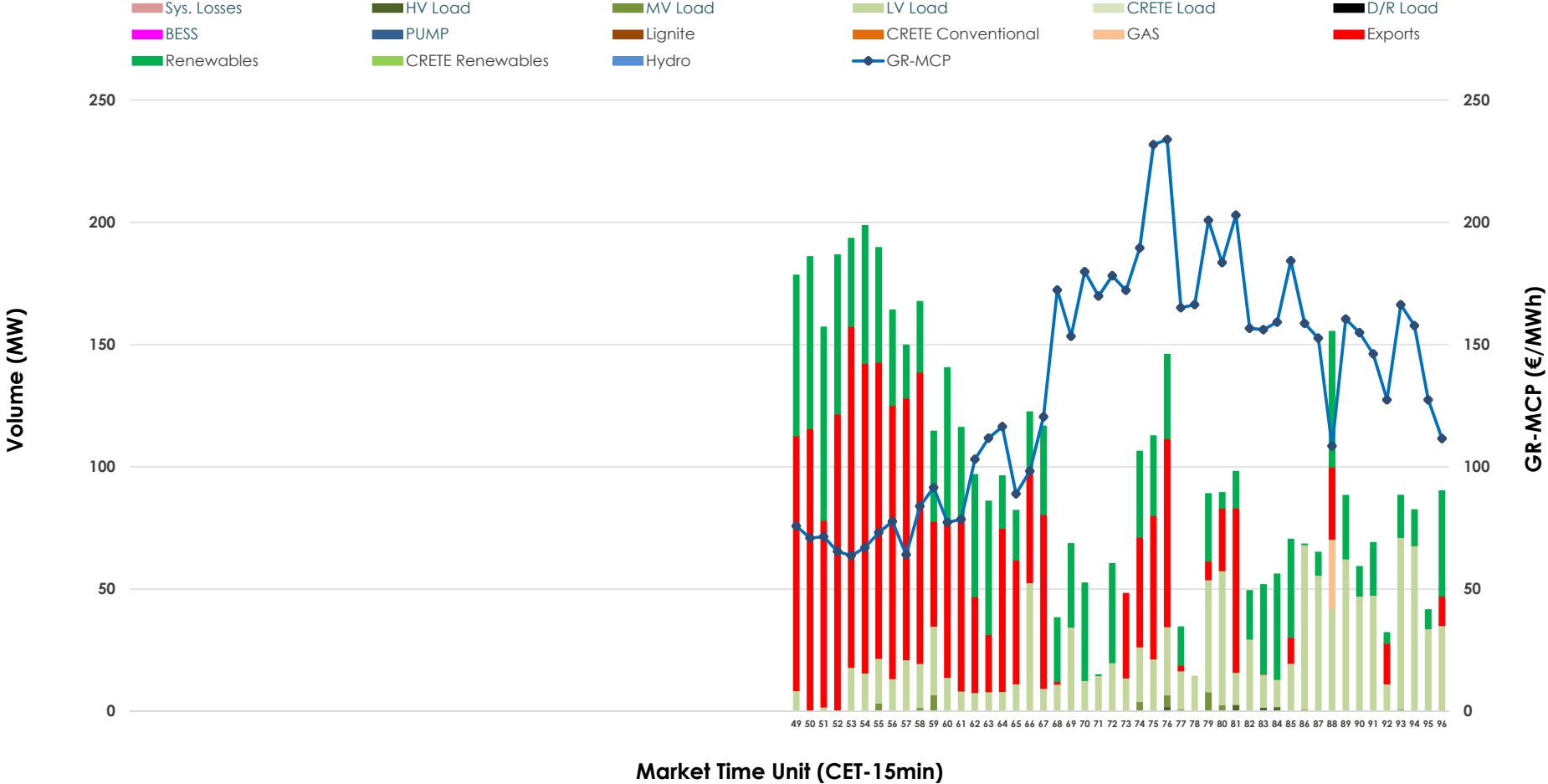


IDA '3' Market Outlook

20.03.2026 IDA '3' Market - Sell



20.03.2026 IDA '3' Market - Buy



GR Bidding Zone Weekly Figures

Delivery Day	14.03	15.03	16.03	17.03	18.03	19.03	20.03
	↗ 25%	↘ -6%	↕ 55%	↘ -11%	↘ -17%	↕ 42%	↘ -2%
Avg.MCP (€/MWh)	90.25	84.79	131.09	116.23	96.32	136.60	133.90
Max.MCP (€/MWh)	172.47	154.76	217.49	177.74	167.86	208.87	233.89
Min.MCP (€/MWh)	-9.52	-13.13	11.16	68.62	-1.80	81.08	63.67
	↘ -1%	↘ -51%	↕ 99%	↘ -29%	↕ 114%	↘ -44%	↗ 10%
Tot.Vol(GWh)	2.61	1.29	2.57	1.82	3.90	2.17	2.39

Trades by Order Type

Delivery Day		14.03	15.03	16.03	17.03	18.03	19.03	20.03	
Ord Price Type		Sell & Buy Trades in (GWh) per Price Type							(%)
PPT	(S)	0.000	0.000	0.000	0.000	0.000	0.000	0.000	0.00%
HBD	(S)	1.299	0.607	1.094	0.460	0.722	0.520	1.020	85.27%
BLK	(S)	0.000	0.000	0.000	0.000	0.000	0.000	0.000	0.00%
CPL	(S)	0.007	0.038	0.191	0.452	1.228	0.563	0.176	14.73%
PPT	(B)	0.000	0.000	0.000	0.000	0.000	0.000	0.000	0.00%
HBD	(B)	0.457	0.321	0.799	0.876	1.923	0.997	0.695	58.15%
BLK	(B)	0.000	0.000	0.000	0.000	0.000	0.000	0.000	0.00%
CPL	(B)	0.848	0.323	0.486	0.036	0.027	0.086	0.501	41.85%
		Sell & Buy Orders Traded per Price Type							(%)
PPT	(S)	0	0	0	0	0	0	0	0.00%
HBD	(S)	207	85	235	217	180	257	213	100.00%
BLK	(S)	0	0	0	0	0	0	0	0.00%
PPT	(B)	0	0	0	0	0	0	0	0.00%
HBD	(B)	121	107	174	306	290	226	328	100.00%
BLK	(B)	0	0	0	0	0	0	0	0.00%

- MCP** Market Clearing Price (€/MWh)
- PPT** Priority Price-Taking
- HBD** Hybrid
- BLK** Block
- CPL** Market Coupling Flow

Trade's Volume Mix

		Sell - MWh	Buy - MWh	
Lignite	(0.0%)	0	0	(0.0%)
Crete Conv.	(0.0%)	0	0	(0.0%)
Gas	(18.6%)	222	7	(0.6%)
Hydro	(0.0%)	0	0	(0.0%)
Imports	(14.7%)	176		
RES	(43.2%)	516	378	(31.6%)
Crete RES	(0.0%)	0	0	(0.0%)
BESS	(0.0%)	0	0	(0.0%)
HV Load	(0.0%)	0	2	(0.2%)
MV Load	(5.9%)	71	9	(0.7%)
LV Load	(17.6%)	211	300	(25.1%)
Crete Load	(0.0%)	0	0	(0.0%)
Pumping	(0.0%)	0	0	(0.0%)
Exports			501	(41.9%)
Sys.Losses	(0.0%)	0	0	(0.0%)
D/R Load	(0.0%)	0	0	(0.0%)

