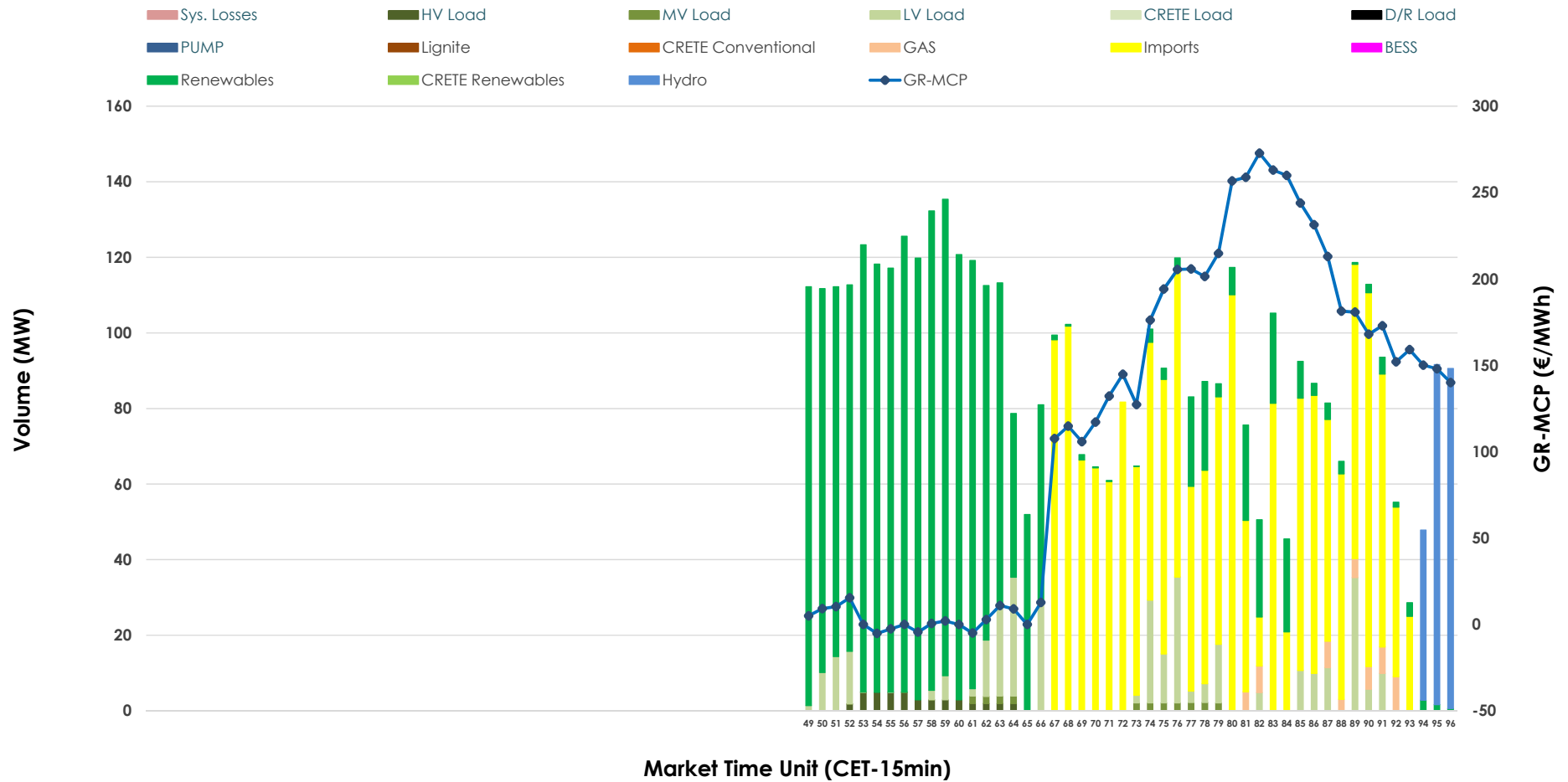


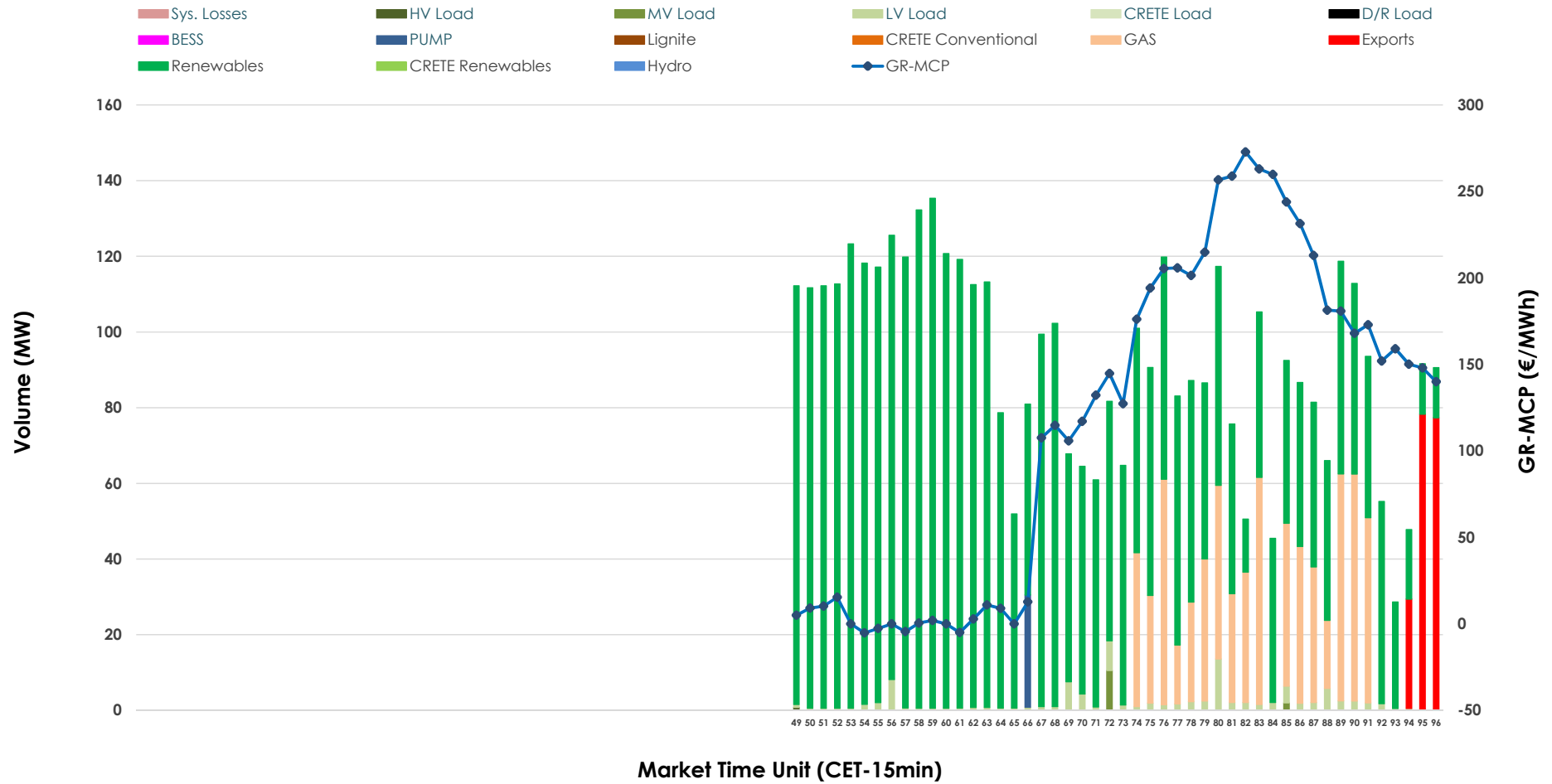


IDA '3' Market Outlook

18.05.2026 IDA '3' Market - Sell



18.05.2026 IDA '3' Market - Buy



GR Bidding Zone Weekly Figures

Delivery Day	12.05	13.05	14.05	15.05	16.05	17.05	18.05
	↓ -36%	↑ 44%	↘ -8%	↘ -8%	↘ -18%	↗ 3%	↑ 63%
Avg.MCP (€/MWh)	69.35	99.87	91.74	84.49	69.38	71.12	115.83
Max.MCP (€/MWh)	186.70	193.09	241.73	153.65	132.56	146.50	272.82
Min.MCP (€/MWh)	0.90	-3.00	-10.36	0.01	1.52	-15.83	-5.23
	↗ 4%	↘ -1%	↘ -21%	↑ 49%	↘ -7%	↓ -48%	↑ 96%
Tot.Vol(GWh)	2.02	2.00	1.57	2.34	2.18	1.14	2.23

Trades by Order Type

Delivery Day		12.05	13.05	14.05	15.05	16.05	17.05	18.05	
Ord Price Type		Sell & Buy Trades in (GWh) per Price Type							(%)
PPT	(S)	0.000	0.000	0.000	0.000	0.000	0.000	0.000	0.00%
HBD	(S)	1.009	0.965	0.623	0.806	1.089	0.304	0.670	60.03%
BLK	(S)	0.000	0.000	0.000	0.000	0.000	0.000	0.000	0.00%
CPL	(S)	0.000	0.036	0.163	0.364	0.000	0.266	0.446	39.97%
PPT	(B)	0.000	0.000	0.000	0.000	0.000	0.000	0.000	0.00%
HBD	(B)	0.844	0.874	0.771	1.144	0.603	0.446	1.071	95.87%
BLK	(B)	0.000	0.000	0.000	0.000	0.000	0.000	0.000	0.00%
CPL	(B)	0.165	0.127	0.015	0.025	0.486	0.124	0.046	4.13%
		Sell & Buy Orders Traded per Price Type							(%)
PPT	(S)	0	0	0	0	0	0	0	0.00%
HBD	(S)	185	254	164	112	220	81	183	100.00%
BLK	(S)	0	0	0	0	0	0	0	0.00%
PPT	(B)	0	0	0	0	0	0	0	0.00%
HBD	(B)	115	183	112	246	129	163	307	100.00%
BLK	(B)	0	0	0	0	0	0	0	0.00%

- MCP** Market Clearing Price (€/MWh)
- PPT** Priority Price-Taking
- HBD** Hybrid
- BLK** Block
- CPL** Market Coupling Flow

Trade's Volume Mix

		Sell - MWh	Buy - MWh	
Lignite	(0.0%)	0	0	(0.0%)
Crete Conv.	(0.0%)	0	0	(0.0%)
Gas	(1.1%)	12	171	(15.3%)
Hydro	(5.0%)	56	0	(0.0%)
Imports	(40.0%)	446		
RES	(44.9%)	502	863	(77.3%)
Crete RES	(0.0%)	0	0	(0.0%)
BESS	(0.0%)	0	0	(0.0%)
HV Load	(0.9%)	10	0	(0.0%)
MV Load	(0.5%)	6	3	(0.3%)
LV Load	(7.5%)	84	26	(2.3%)
Crete Load	(0.0%)	0	0	(0.0%)
Pumping	(0.0%)	0	7	(0.7%)
Exports			46	(4.1%)
Sys.Losses	(0.0%)	0	0	(0.0%)
D/R Load	(0.0%)	0	0	(0.0%)

